

# CONTENTS

<b>Chapter1</b>	<b>Introducing SysReturn</b>	<b>3</b>
	Introduction to SysReturn	3
	Features and Functions	3
<b>Chapter2</b>	<b>Glossary</b>	<b>5</b>
<b>Chapter3</b>	<b>System Requirement</b>	<b>6</b>
	Hardware Requirement	6
	Software Requirement	6
<b>Chapter4</b>	<b>Install SysReturn</b>	<b>7</b>
	Preparation	7
	Proceed Installation	7
<b>Chapter5</b>	<b>Uninstall SysReturn</b>	<b>13</b>
	Uninstall under Dos	13
	Uninstall under Windows	14
<b>Chapter6</b>	<b>Working under Windows</b>	<b>18</b>
	Space Usage/Recovery Point Information/Partition Information	18
	Recover	19
	Reserve	22
	Create New Recovery Point	24
	Create Primary Recovery Point	27
	Delete Recovery Point	30
	Edit Recovery Point Name	33
	Set Parameters	35
	Recovery Mode	37
	Protect CMOS	37
	Alarm Setting	38
	Change Password	38
<b>Chapter7</b>	<b>Working under DOS</b>	<b>40</b>
	Operation Notes	40

<b>Operation Guide (taking keyboard operation as an example):</b>	<b>40</b>
<i>Reserve</i>	41
<i>Recover</i>	42
<i>Recover to...</i>	42
<i>Create Point (Create New Recovery Point)</i>	43
<i>Create Primary (Create New Primary Recovery Point)</i>	43
<i>Delete Recovery Point</i>	45
<i>Settings</i>	45
<i>Uninstall</i>	47
<b>Chapter8   <i>Frequently Asked Questions</i></b>	<b>49</b>

## Chapter1 **Introducing SysReturn**

### **Introduction to SysReturn**

Due to frequent use, your computer might encounter hardware/software malfunction, data loss during improper operation, system resource over-occupation with anonymous applications, virus infection, or even system collapse. You might have to spend a lot of time bringing system back to normal. In order to solve your problem, we offer you SysReturn with which you can easily "recover" your computer to a secure and efficient system, so that you will no longer waste time setting up system again and again. SysReturn is your best assistant, making possible a secure and efficient workbench.

### **Features and Functions**

#### **Instant Recovery**

With SysReturn you only need to spend a few seconds to bring back your system to a desirable setting you have configured. Even when your system was attack by the latest computer virus SysReturn can bring it to a clean status.

#### **Protect CMOS**

Any unauthorized modification in CMOS setting will be able to retrieve back to the original configuration after system reboot.

#### **Multi-Point-Recovery**

Multiple Recovery Point is a breakthrough technology that allows you to recover the HD information to your desirable status provided by marking the status as the recovery point. Whether this recovery point was saved an hour ago, one day ago or even one month ago... Also you can freely inter-switch between recovery points and does not need to worry about information on HD will be lost.

#### **Support Multi-Partition**

In situation where your system was configured with multiple-partitions or multiple-operating systems, you will have the option to select one, selected or all partitions/operating system to be covered by SysReturn.

#### **Monitoring HD usage**

Space Usage will display current HD space usage, remaining disk spaces and notifies users automatically when HD free space falls behind the safe level.

**Convenient Installation**

SysReturn is a pure software product and there is no need for special hardware to work in conjunction. It is not necessary to reconfigure your system such as divide partition and reinstall system before you install SysReturn.

**Simple Operation**

All operations can be run on Windows interface that makes them simple and easy to operate.

**Minimum HD Space Occupation**

SysReturn only requires minimum HD space for installation, and with its high compression ratio, the backup files will not occupy a large portion of HD space.

## Chapter2 Glossary

### **Recovery Point**

According to users requirement SysReturn will be able to record the status of the hard disk as the base for the system to recover to. This recorded status is called Recovery Point.

### **Primary Recovery Point**

Primary Recovery Point, is the fundamental and first recorded recovery point in the system after installed SysReturn. All the other recovery points are created based on change of the recovery point. , A Primary recovery point will be created when you install SysReturn or execute the “Create New Primary Recovery Point” command. When you create a new primary recovery point it will replaces the old one and other recovery points will also be removed.

### **Recover**

Recover is the command to retrieve HD data that users previously recorded as a recovery point. Users may recover the system to any selected recovery point that they previously set. System information and settings that has not been recorded as a recovery point will be lost when users retrieve the system to an earlier recovery point.

### **Reserve Data**

Reserve Data will allows information and settings that has not been recorded as a recovery point to remain on the system temporary.

### **Create New Recovery Point**

Create New Recovery Point is the command to record the current HD information and setting as a recovery point for system to retrieve to.

### **Create New Primary Recovery Point based on current HD Config**

This command will create a new primary recovery point and record the current information and settings of the system. When you create a new primary recovery point it will replaces the old one and other recovery points will also be removed.

### **Free Space**

Free space refers to remaining space in HD.

## Chapter3 System Requirement

### Hardware Requirement

- IBM PC 80386 or higher
- SVGA display
- At least one Hard Disk supported by BIOS

### Software Requirement

- DOS 5.0 or higher
- SVGA display
- Windows 3.0 or higher
- Windows 95/97/98/Me
- Windows NT/2K/XP

## Chapter4 Install SysReturn

### Preparation

1. Please ensure that your computer operates normally and meets the minimum system requirements of SysReturn.
2. If you have already installed the old version of SysReturn or similar products from other vendors, please ensure they are completely removed before installation.
3. It's recommended to scan the computer to ensure virus free before installation. Then disable the anti-virus software temporarily because some anti-virus software may recognize the installation of SysReturn as a virus by mistake.
4. Disable the virus warning option in CMOS and set the first boot device as Network or LAN in the boot sequence in CMOS.
5. Ensure the hard disks' parameters are equal to the hard disk's parameters shown in CMOS. If the hard disk's parameters are not equal, the user needs to enter in the BIOS setting to re-detect the hard disk's type and volume.
6. If any multi-boot tools have been installed in this computer, please ensure that this multi-boot tool does not occupy MBR of the hard disk. If it does, please remove the multi-boot tools before installation. Otherwise SysReturn may damage your operation system.
7. For Windows NT series (WinNT, Win2K, WinXP), user must log in Windows with an administrator account in order to install and operate SysReturn.
8. SysReturn can protect all partitions of the first physical hard disk only. Partitions in any other hard disk can not be protected.
9. It's strongly recommended to defrag the hard disk before installation. This will optimize the system performance and efficiency after you installed SysReturn.

### Proceed Installation

1. Insert the setup CD of SysReturn into the CD-ROM drive and you will see the AutoRun screen as below. Press **Install** button to continue the installation. If the AutoRun screen does not show, please double click on setup.exe in the CD-ROM to proceed.

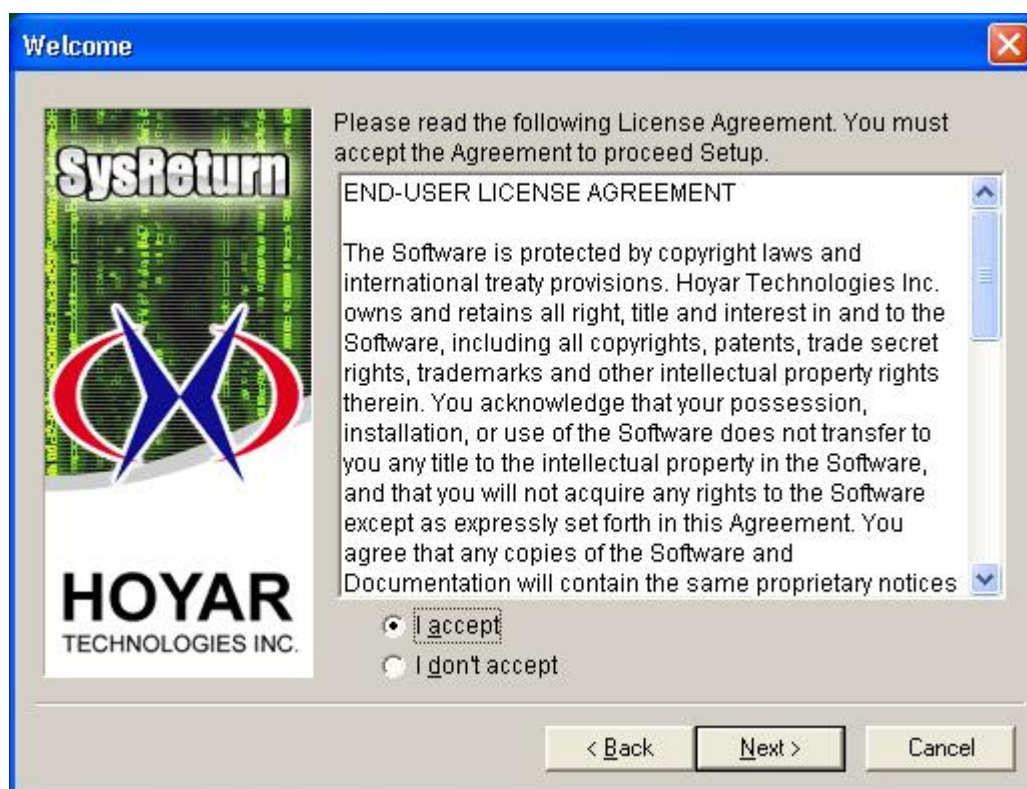


2. After all six inspections below are made, check **All the recommended inspections above are confirmed** and press **Next** to proceed.





3. After reading the end-user license agreement, check **I accept** and click **Next** to continue.



4. In the following dialog, you can pre-set some configurations for SysReturn.
- Users can select any partitions they desire to protect. By default, the system protects all partitions. (Caution: No changes are valid after installation.)
  - In **Maximum number of Recovery Point**, you can set the number of recovery points supported up to **30**. (Caution: No changes are valid after installation.)
  - In **Recovery Mode**, select the action you wish to execute every time you boot up your system: Auto Reserve, Auto Recovery or Manual Recovery.
  - Set the **Protect CMOS** mode. If this option is checked, every time when the CMOS settings are changed, SysReturn will notify users to either save or ignore the changes
  - Set **Password**. The default password is: '**99999999**'.
  - After configuration is finished, click **Next** to continue.

**SysReturn Configuration**

Select drives to be protected:

Drive	File Sy...	Capacity(...	Used Space...	Available Sp...	Protection ...
<input checked="" type="checkbox"/> C:	NTFS	20481	5349	15132	Protected
<input type="checkbox"/> D:	FAT32	17657	11644	6013	Not Protec...

Set Recovery Option

Maximum number of Recovery Point:

Recovery Mode:

☐ Protect CMOS

Password

☒ Use default password:99999999

Input Password:

Confirm Password:

< Back   Next >   Cancel

5. If you didn't check all drives for protection in the previous step, the following dialog will show. If you don't feel like to use our **"Best Performance Setting"**, please select **No**. If you do, select **Yes** and the location storing **"Virtual Memory"** can be moved to a non-protected drive you appointed. Then click **Next** to continue.

**Best Performance Setting**

Would you like to select "Best Performance Setting" for your operating environment?

☒ No.

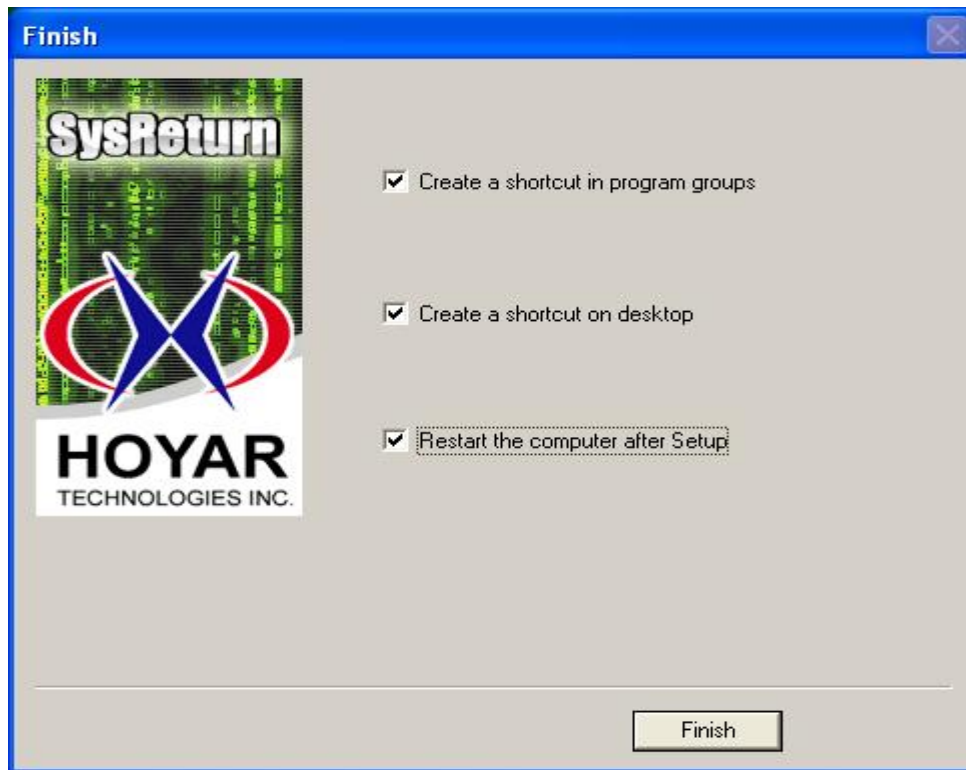
☐ Yes.

Select the drive to store "Virtual Memory":

Available space of the selected drive can't be smaller than 500MB. The drive you select now has 6013MB free space.

< Back   Next >   Cancel

6. Click **Finish** and restart your computer to complete the installation.

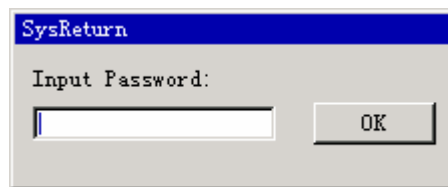


## Chapter5 Uninstall SysReturn

### Uninstall under Dos

This command will retrieve the system to the Primary Recovery Point and before uninstall SysReturn.

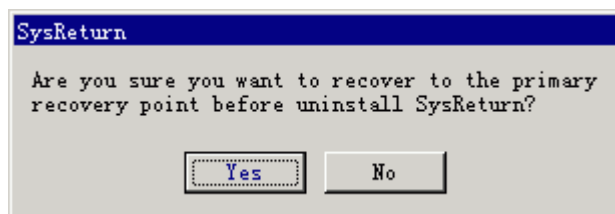
1. Press **Home** key when you start up your computer. The **Input Password** prompt appears:



2. Enter the Password and press **OK** for the following prompt:



3. Press **Uninstall** to enter the following prompt:




4. Click **Yes** to uninstall SysReturn:



5. SysReturn is successfully uninstalled.

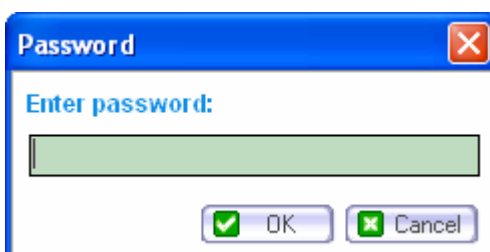
## Uninstall under Windows

You may either recover your system to the selected recovery point or save the current settings and information on your computer before you uninstall the SysReturn.

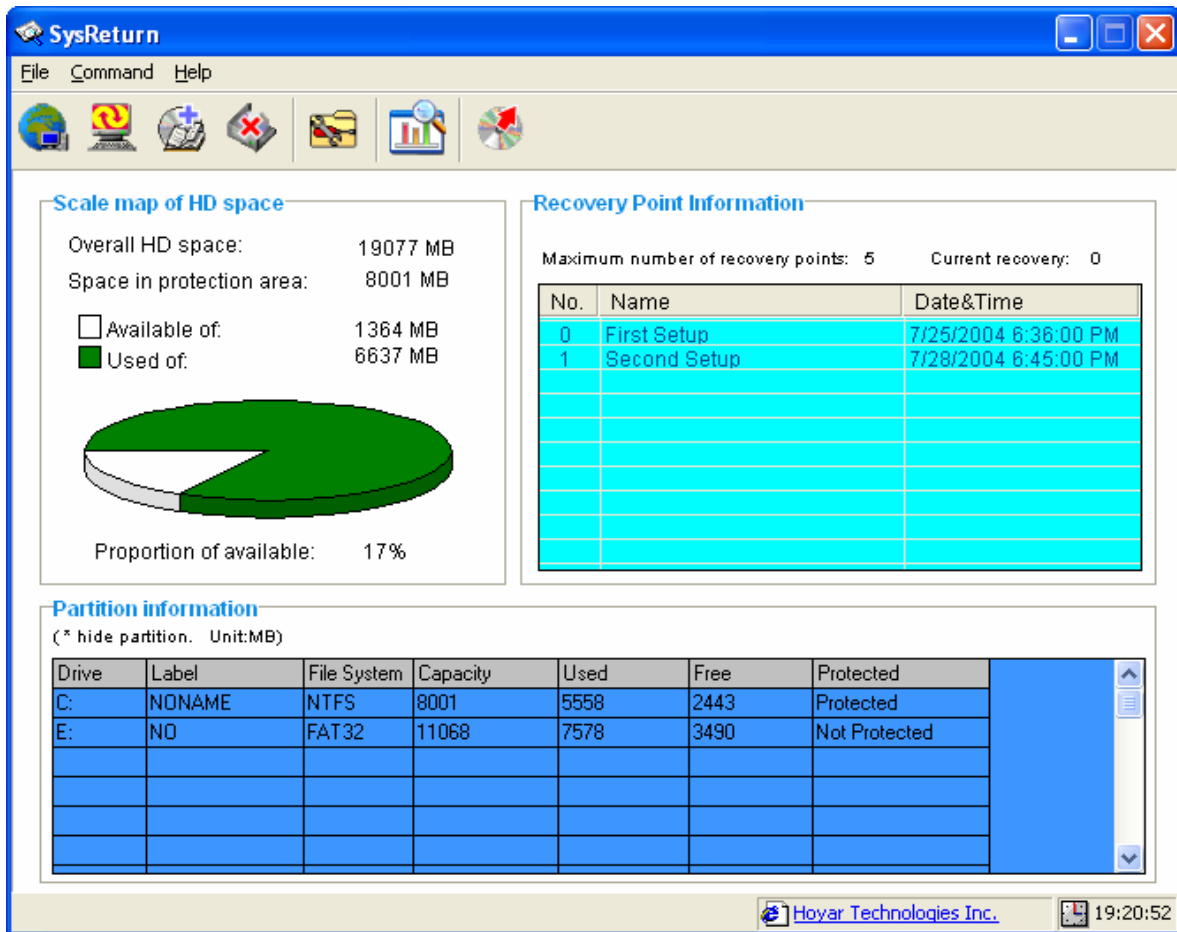
1. Right click SysReturn icon  on task bar for the following pop-up menu:



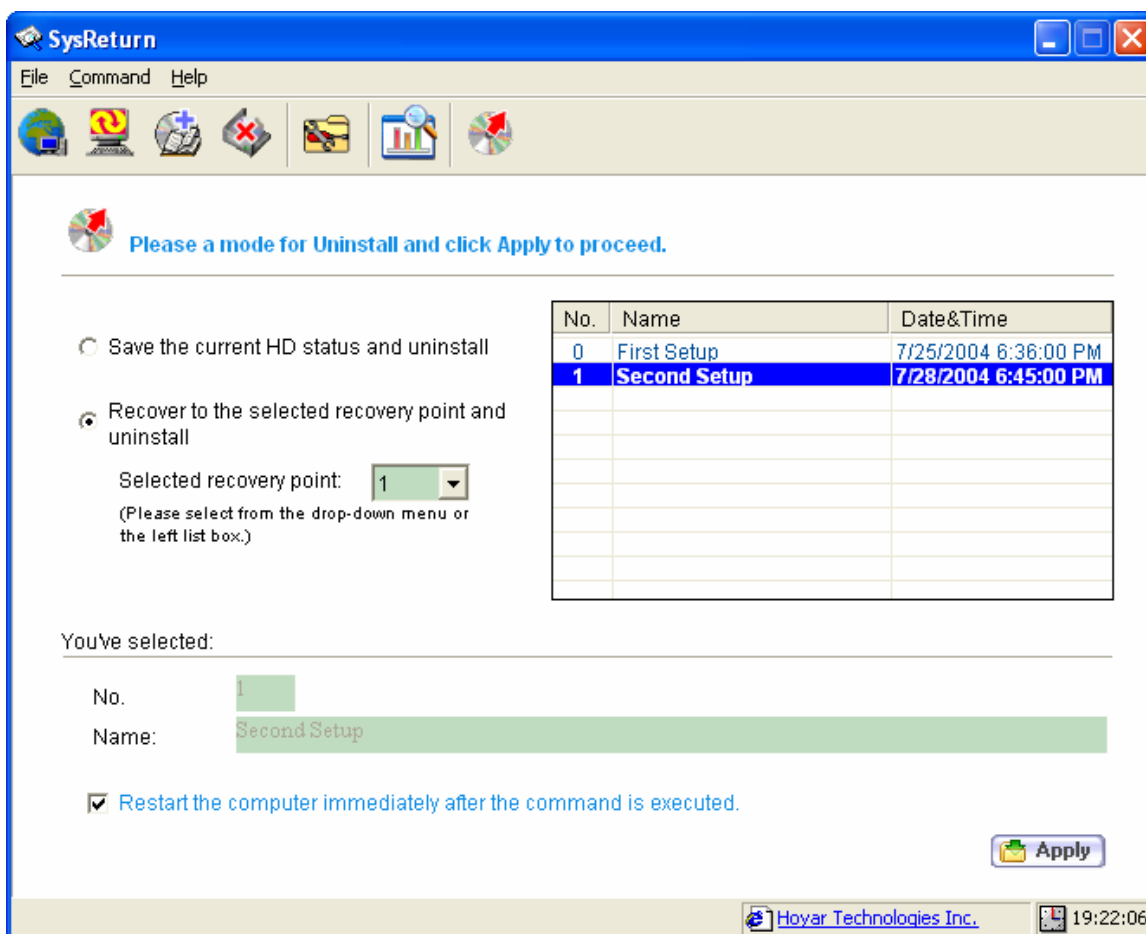
2. Select **Settings...** and the **Password** prompt will appear:



3. Enter the user password then press **OK** to enter **Information** menu:



4. Press **Uninstall** icon  to enter **Uninstall** menu as follows:

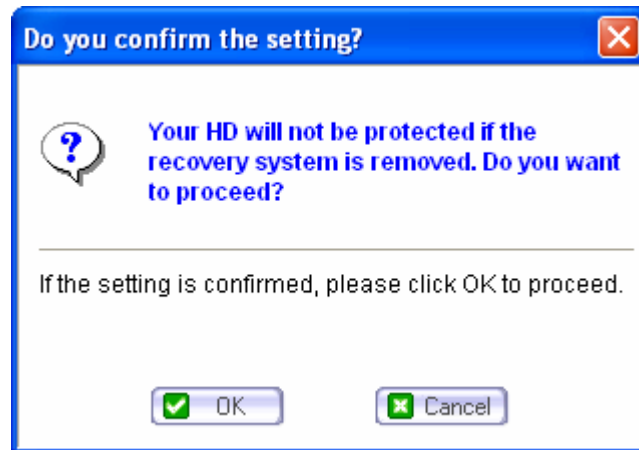


5. If you want to save the current settings and information on you computer before uninstall, please check the option **Save the current HD status and uninstall**.

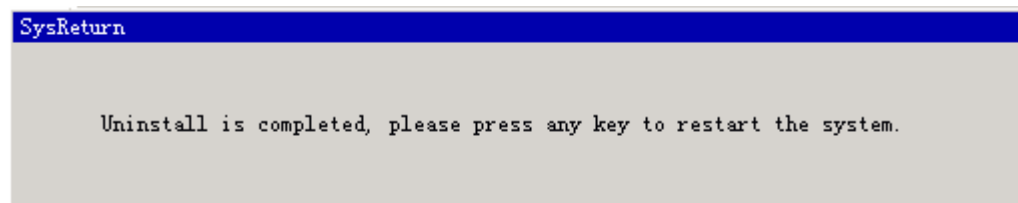
If you want to recover your system to the selected recovery point before uninstall, please check the option **Recover to the selected recovery point and uninstall**. Then select the desired recovery point.

6. Press **Apply** for the following prompt:





7. Press **OK**. The command takes effect after system reboot and the following prompt appears:



8. Press any key to restart the computer.


#### Notes:

- Make sure you restart the computer immediately after you proceed with this command.
- A power surge during uninstall might lead to system collapse.

## Chapter6 Working under Windows

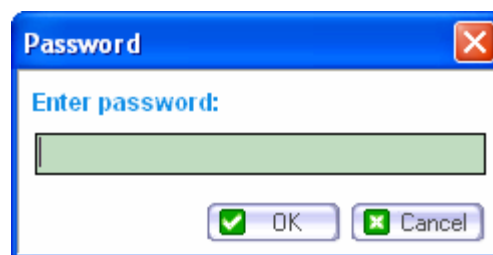
### Space Usage/Recovery Point Information/Partition Information

This function will display current HD usage information, Recovery Point Information and Partition Information.

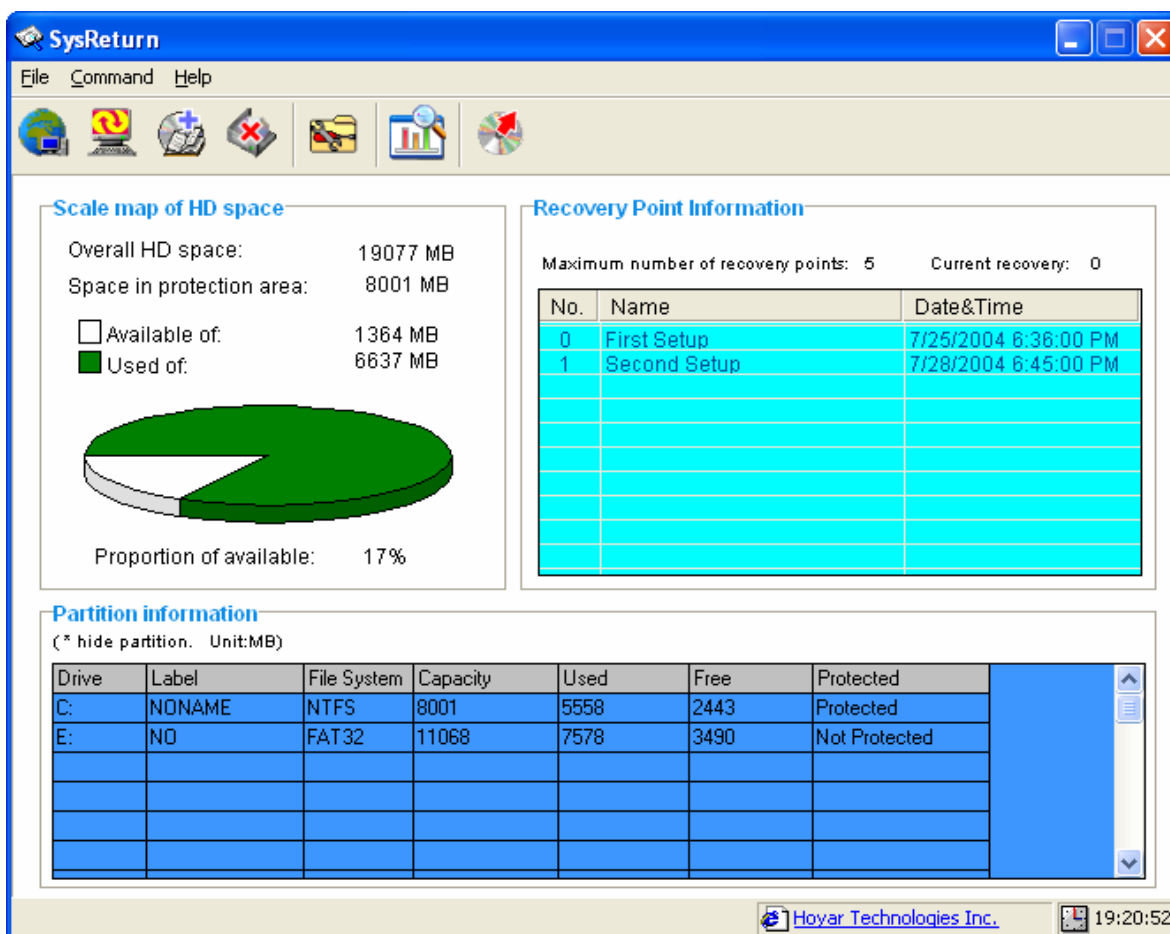
1. Right click SysReturn icon  on the taskbar for the following pop-up menu:



2. Select **Settings...** and the **Password** prompt will appear:




3. Input the password then press **OK** to enter **Information** menu:



4. The **Information** menu above displays current HD usage information, Recovery Point Information and Partition Information.
  - The system will automatically notify users when HD free space falls below the user-defined percentage.
  - The Recovery Point Information includes maximum number of recovery point, current recovery point, and description of every recovery point.
  - The Partition Information displays HD information including type, size, used space, free space and protection property for all the partitions.

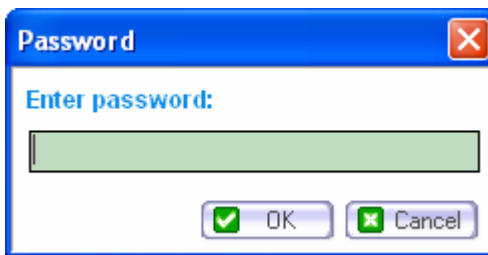
## Recover

This command will retrieve HD data to the last recorded recovery point.

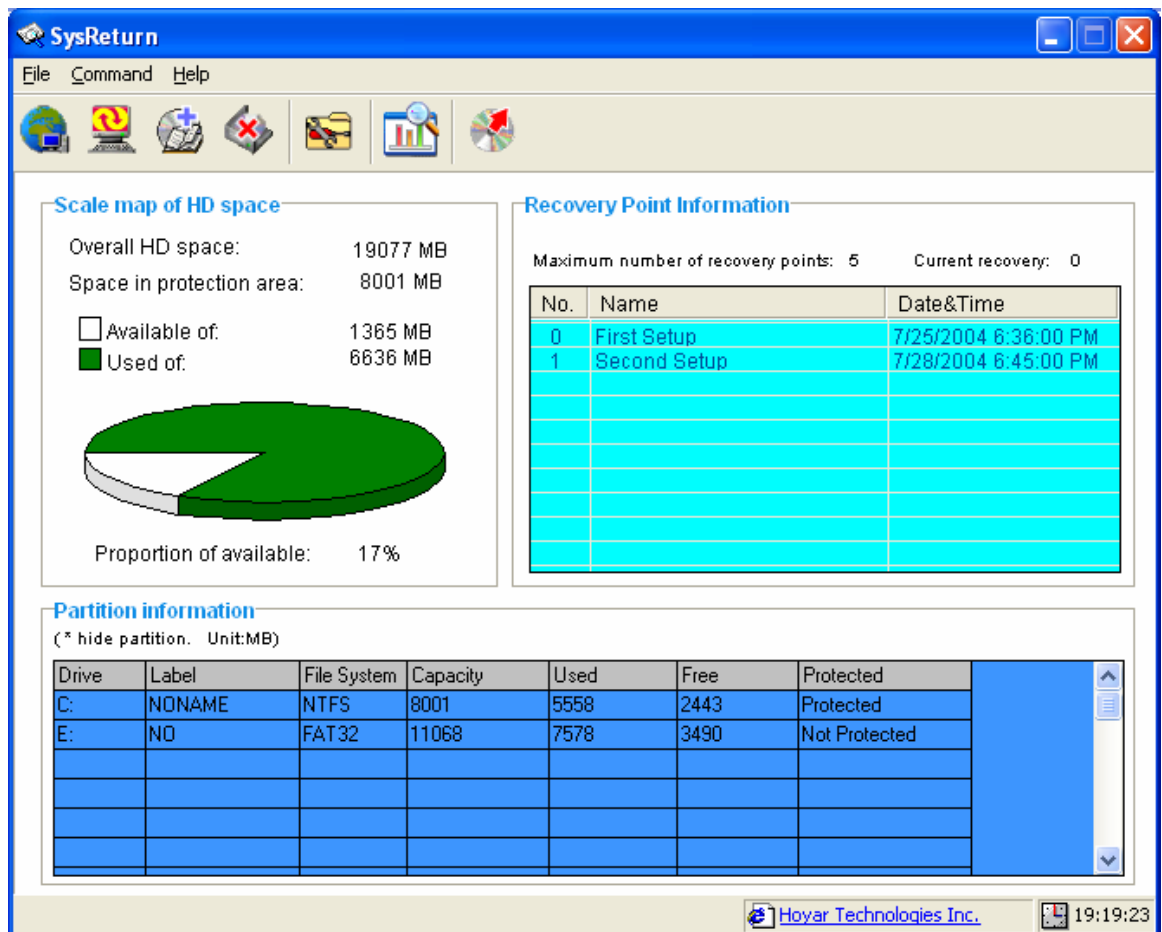
1. Right click SysReturn icon  on the taskbar for the following pop-up menu:



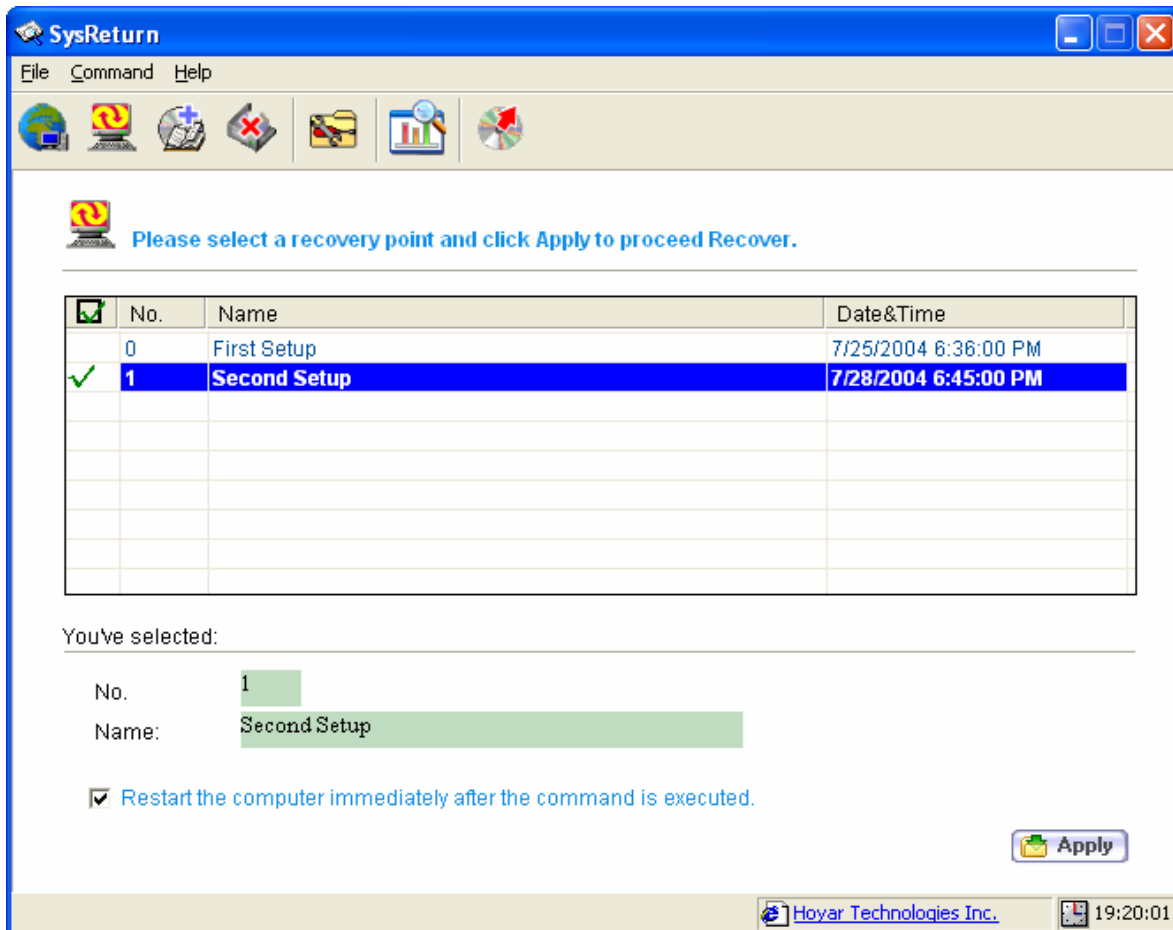
2. Select **Settings...** and the **Password** prompt will appear:



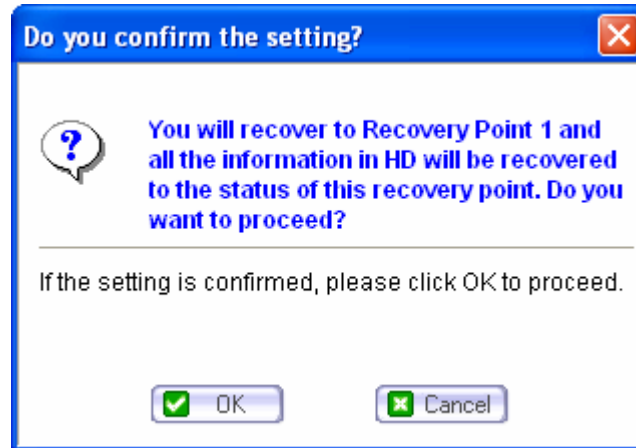
3. Input the password then press **OK** to enter **Information** menu:



4. Press **Recover** icon  to enter **Recover** menu as follows:




5. Select the desired Recovery Point.
6. Press **Apply** button and the following prompt will appear:



7. Press **OK**. The command takes effect after system reboot.

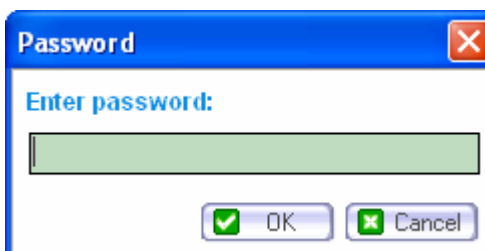
## Reserve

This command will keep the current HD data's status untouched.

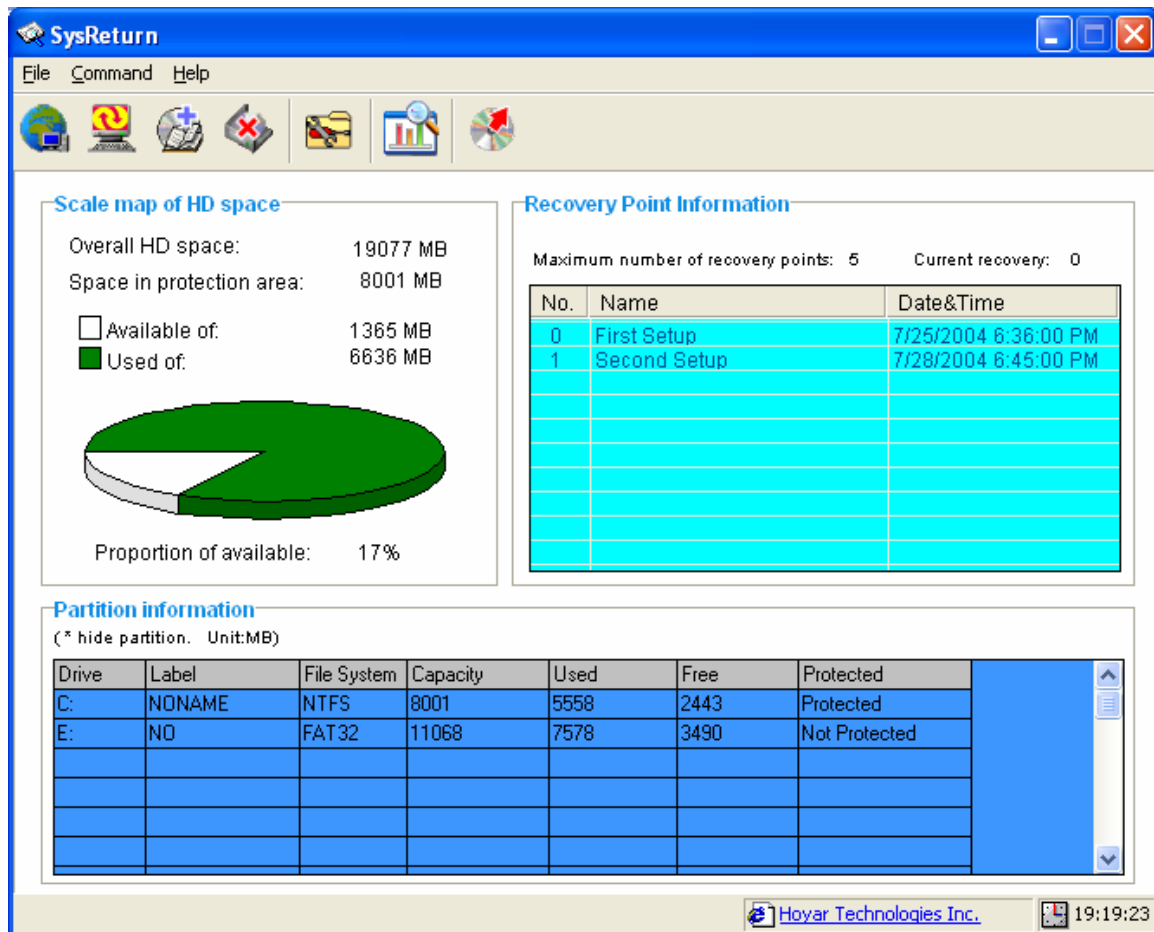
1. Right click SysReturn icon  on the taskbar for the following pop-up menu:




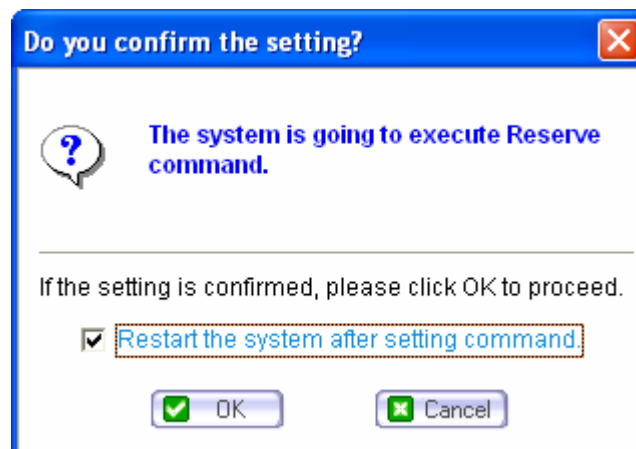
2. Select **Settings...** and the **Password** prompt will appear:



3. Input the password then press **OK** to enter **Information** menu:




4. Press **Reserve** icon  and the following confirmation prompt will appear:



5. Press **OK**. The command takes effect after system reboot.

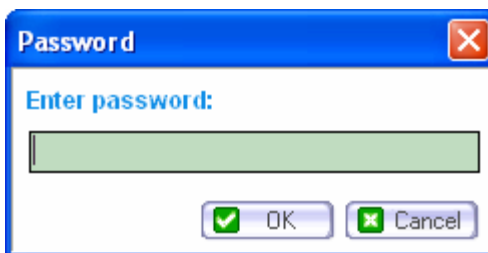
## Create New Recovery Point

This command saves the current HD data's status as a new recovery point. SysReturn can store up to 30 different recovery points, so that user can switch among those recovery points and operate its environment.

1. Right click SysReturn icon  on the taskbar for the following pop-up menu:

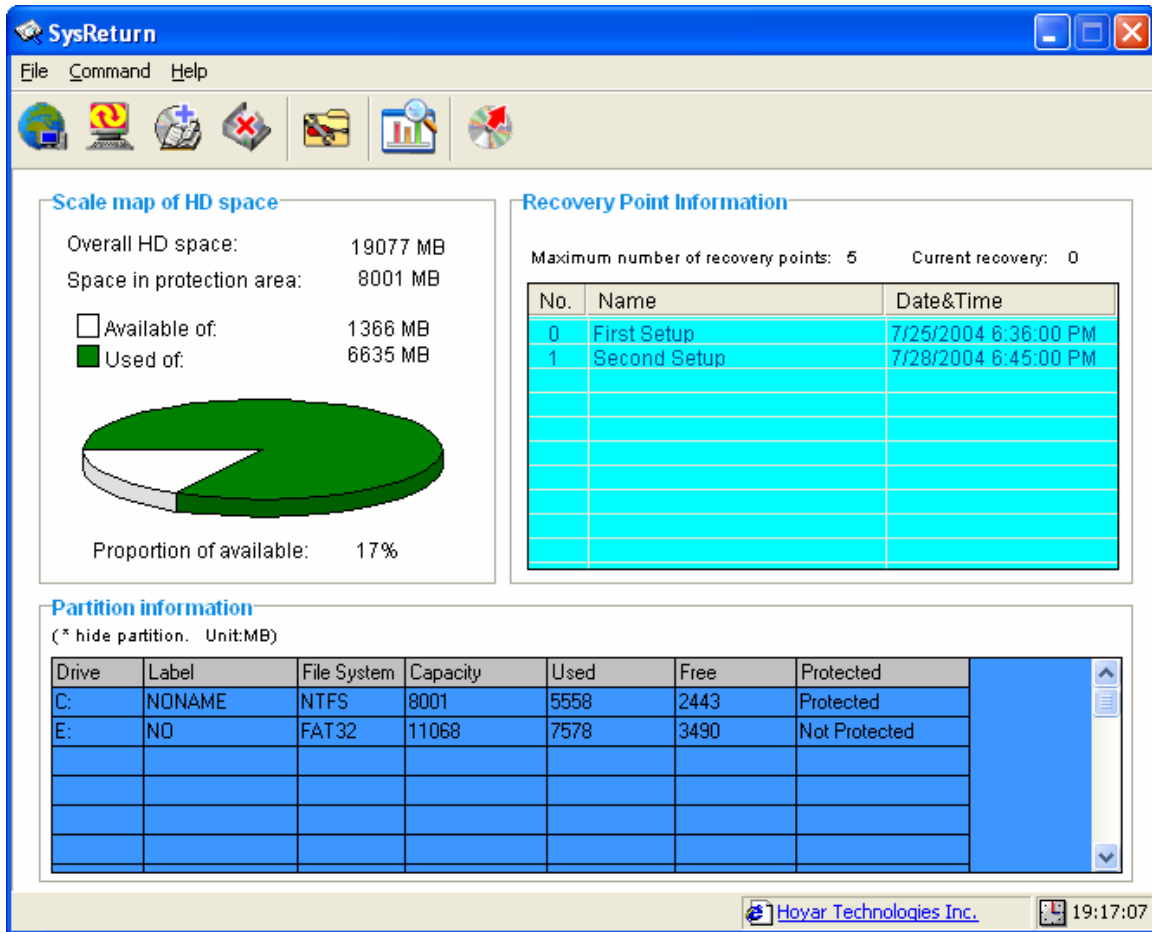


2. Select **Settings...** and the **Password** prompt will appear:

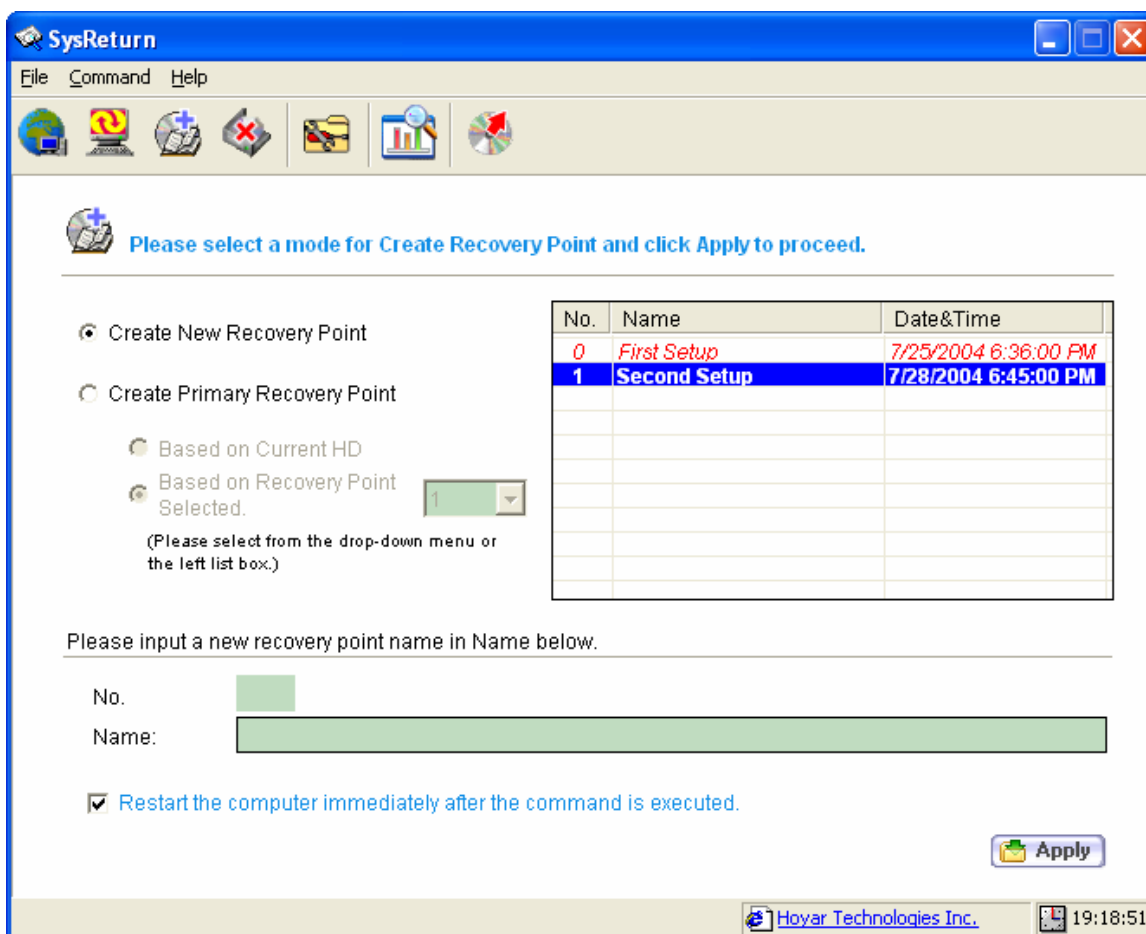


3. Input the password then press **OK** to enter **Information** menu:

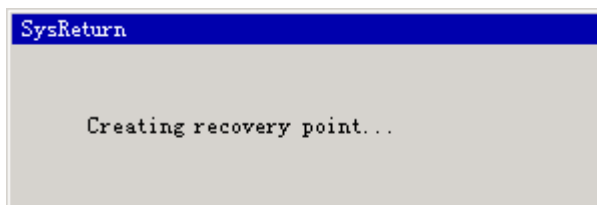




4. Press **Create** icon  to enter **Create** menu as follows:



5. Select **Create New Recovery Point** and you will to create a new recovery point based on the current HD status.
6. Press **Apply** and the command will take effect after system reboot.
7. After system reboot, the following prompt appears:




8. A new recovery point is created. The information of this new recovery point is displayed in **Information** menu.

## Create Primary Recovery Point

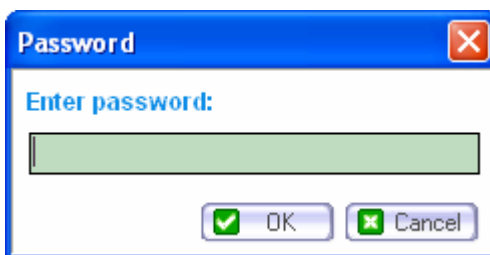
There are two modes of **Create Primary Recovery Point**:

- **Create Primary Recovery Point Based on Current HD:** create a new primary recovery point based on the current HD and remove all other recovery points.
- **Create Primary Recovery Point Based on Recovery Point Selected:** convert an existing recovery point into a Primary Recovery Point and remove all other recovery points.

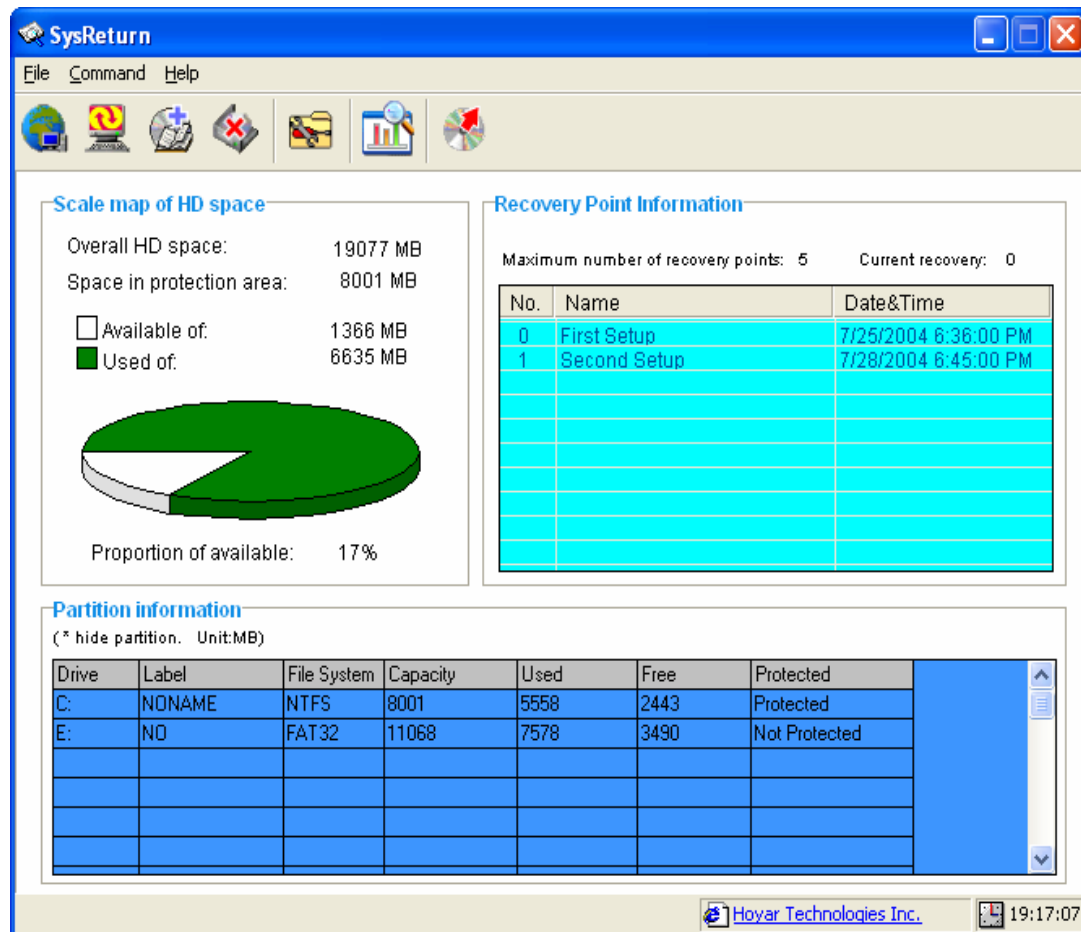
1. Right click SysReturn icon  on the taskbar for the following pop-up menu:



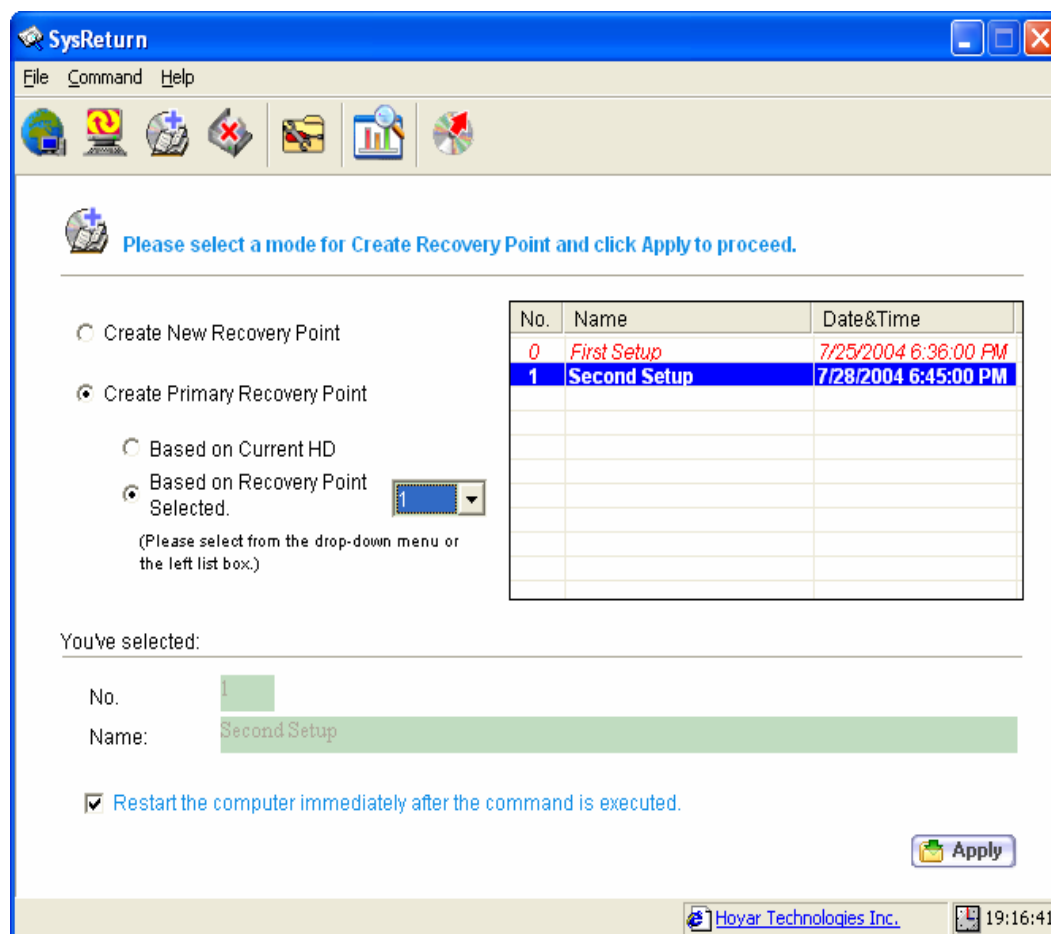
2. Select **Settings...** and the **Password** prompt will appear:



3. Input the password then press **OK** to enter **Information** menu:



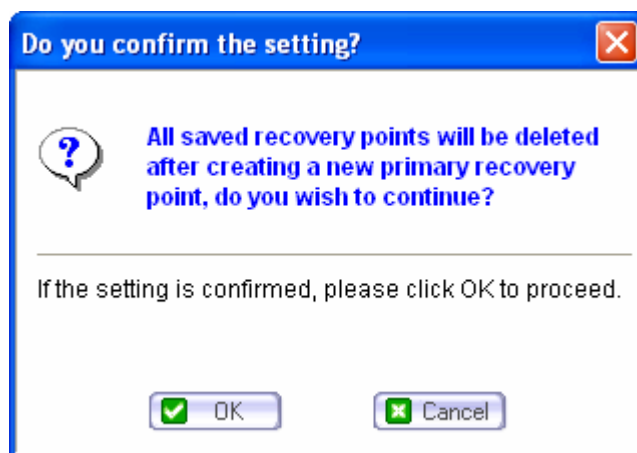
4. Press **Create** icon  to enter **Create** menu as follows:



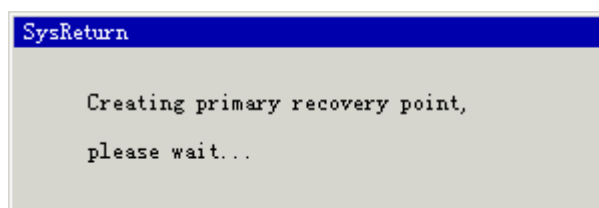
5. If you want to save the current HD status as the primary recovery point and remove all other recovery points, please select **Create Primary Recovery Point -> Based on Current HD**.

If you want to convert an existing recovery point into the primary recovery point and remove all other recovery points, please select **Create Primary Recovery Point -> Based on Recovery Point Selected** and select an existing recovery point from the drop-down menu.

6. Press **Apply** for the following prompt:




7. Press **OK**. After system reboot, the following prompt appears:



8. The Primary Recovery Point is updated and all other recovery points are deleted.

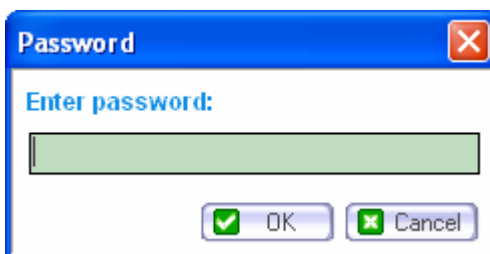
## Delete Recovery Point

This command will delete the recovery point specified by user.

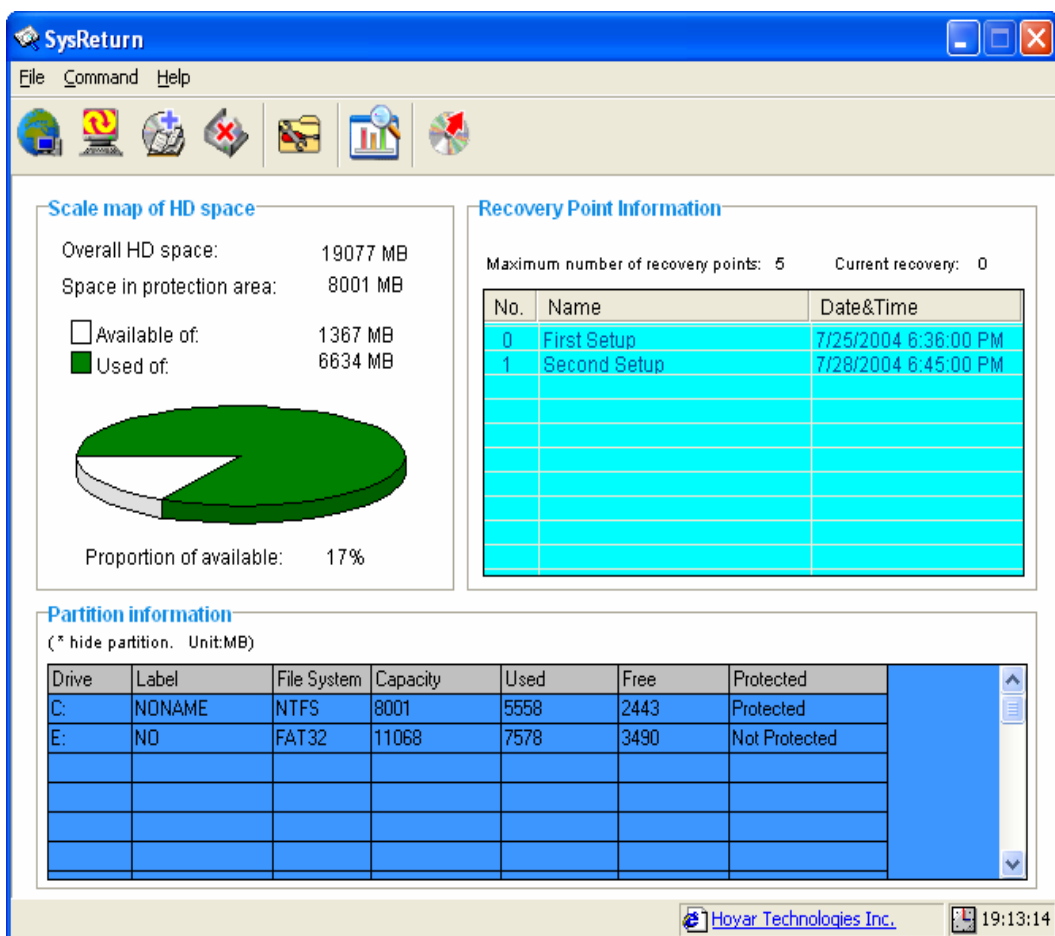
1. Right click SysReturn icon  on the taskbar for the following pop-up menu:



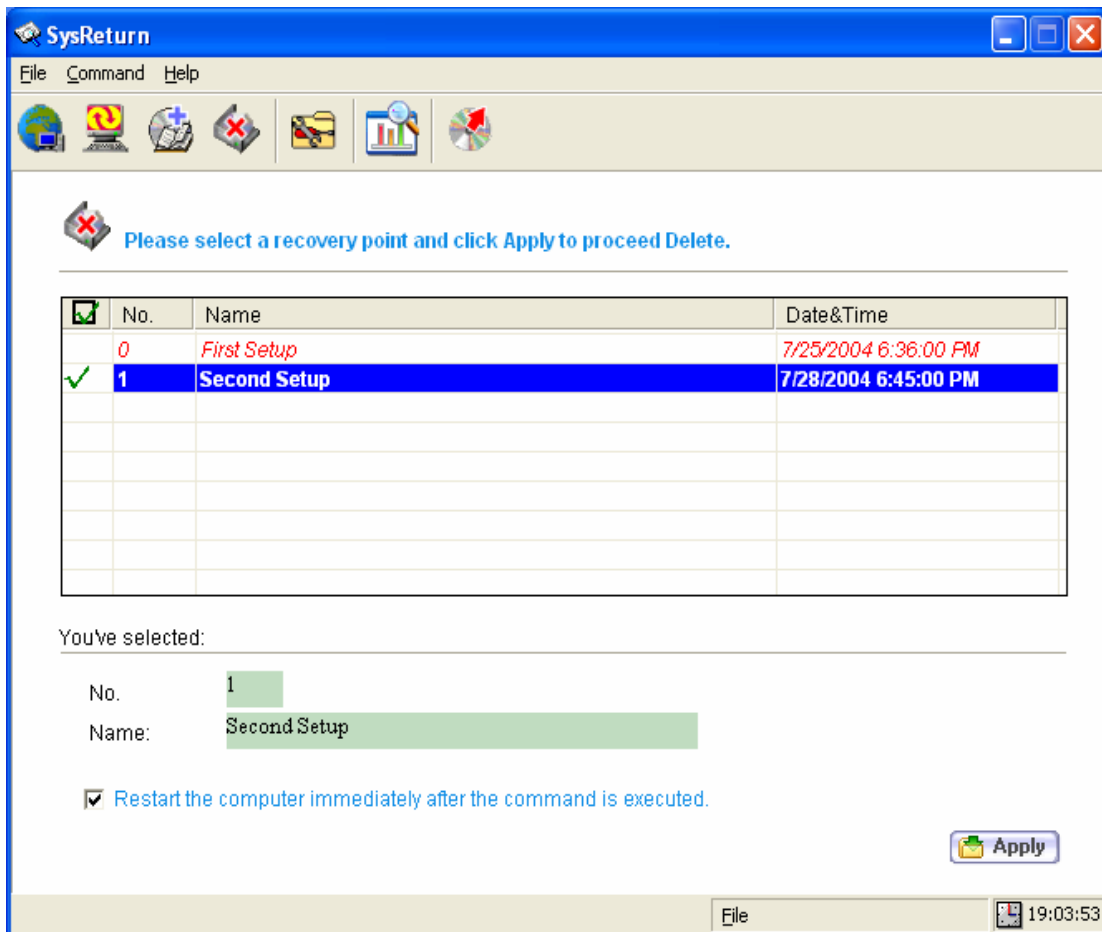
2. Select **Settings...** and the **Password** prompt will appear:



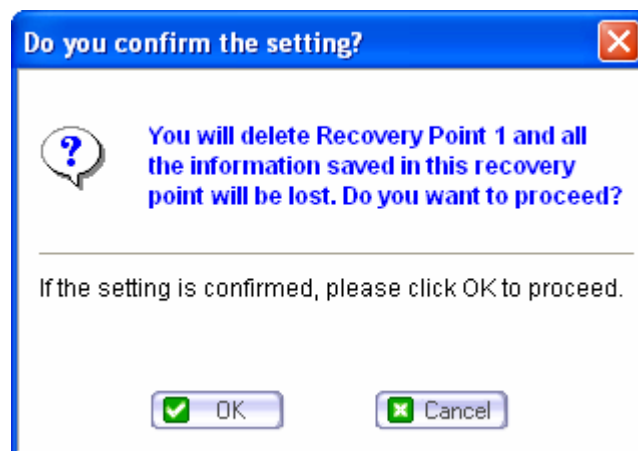
3. Input the password then press **OK** to enter **Information** menu:



4. Press **Delete** icon  to enter **Delete** menu as follows:



5. Select the desired recovery point and press **Apply** for the following prompt:




6. Press **OK**. The command takes effect after system reboot.



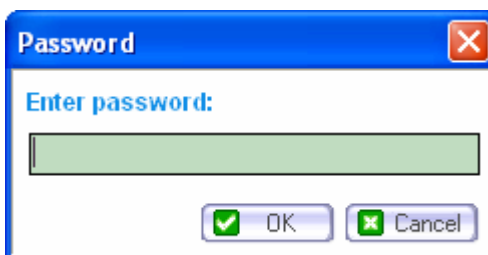
## Edit Recovery Point Name

This function is to edit the name of recovery point.

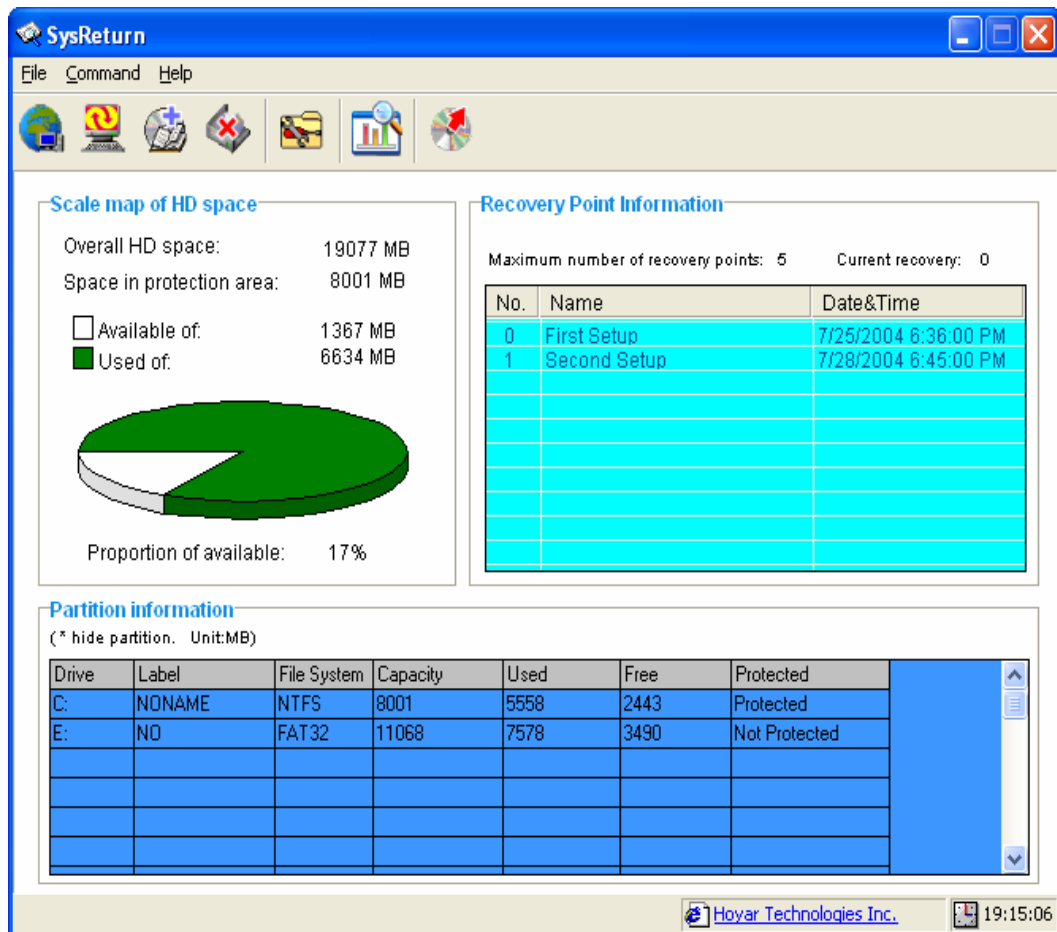
1. Right click SysReturn icon  on the taskbar for the following pop-up menu:



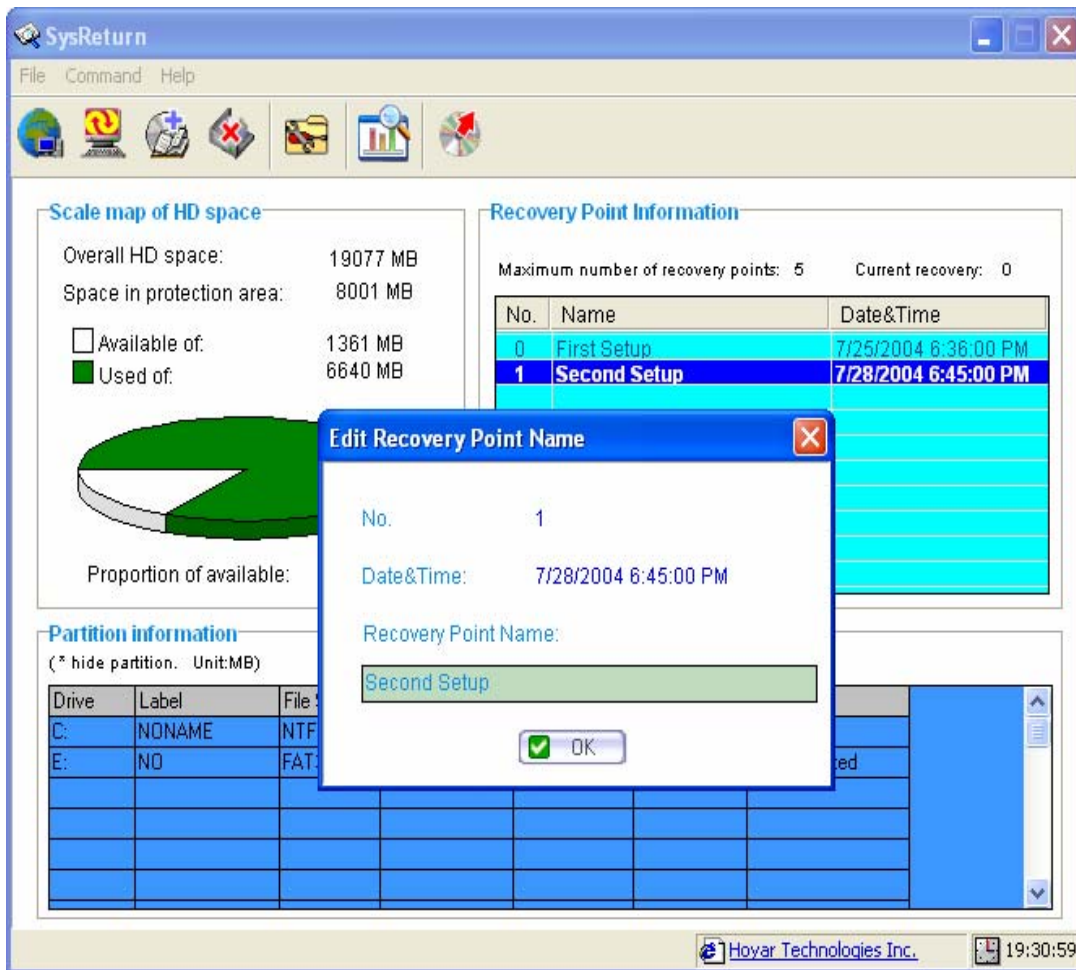
2. Select **Settings...** and the **Password** prompt will appear:



3. Input the password then press **OK** to enter **Information** menu:



4. In **Recovery Point Information** field, double click on a recovery point and the following prompt will appear:




5. Edit the name of the selected recovery point and press **OK**.

#### Notes:

- You can edit the recovery point name by double clicking on any recovery point table in other menus.

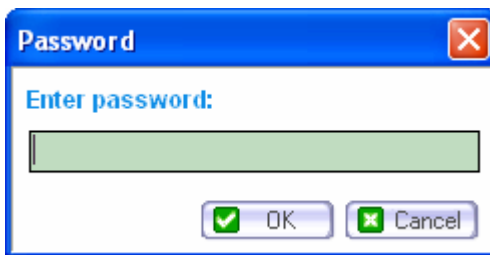
## Set Parameters

SysReturn allows you to set different parameters in SysReturn including Auto Recovery, Manual Recovery, CMOS Protection, and password modification. To set parameters:

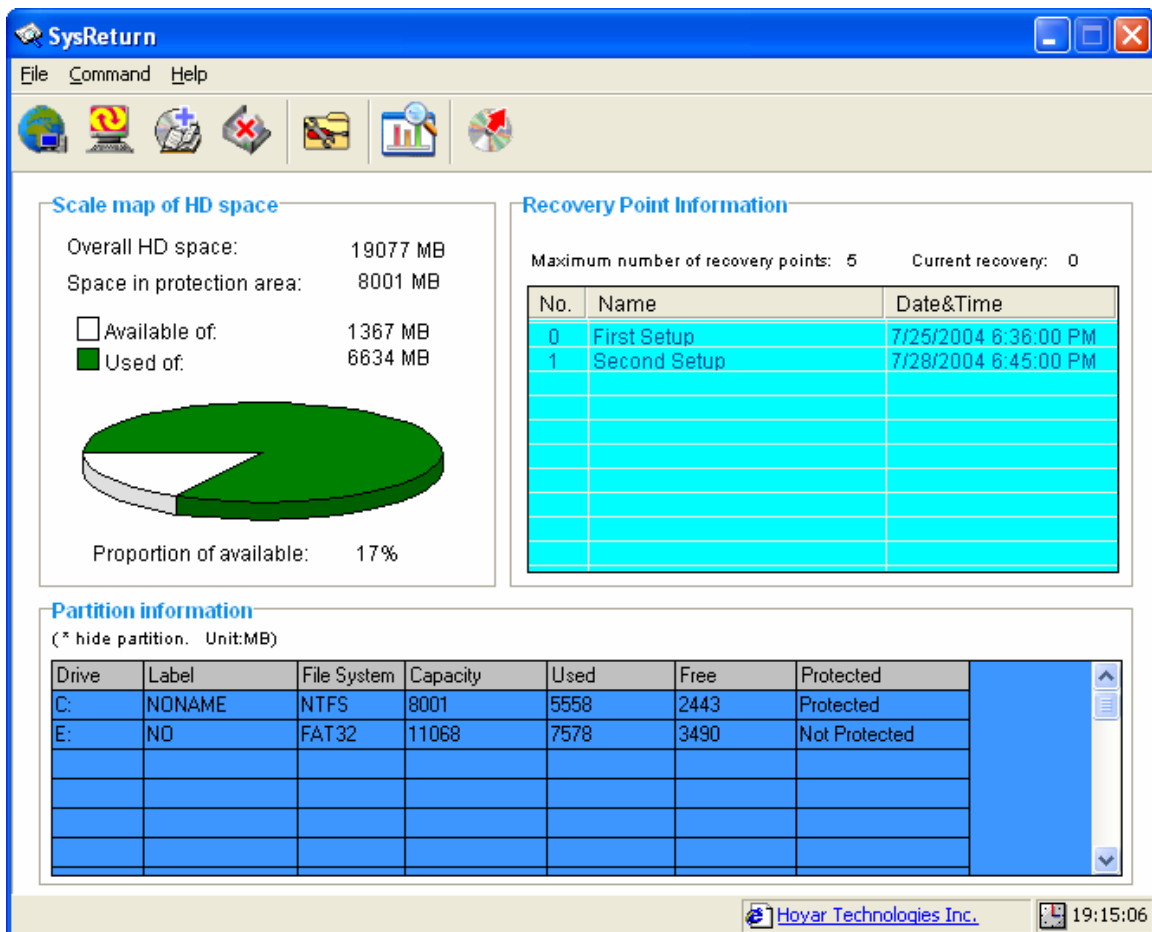
1. Right click SysReturn icon  on the taskbar for the following pop-up menu:




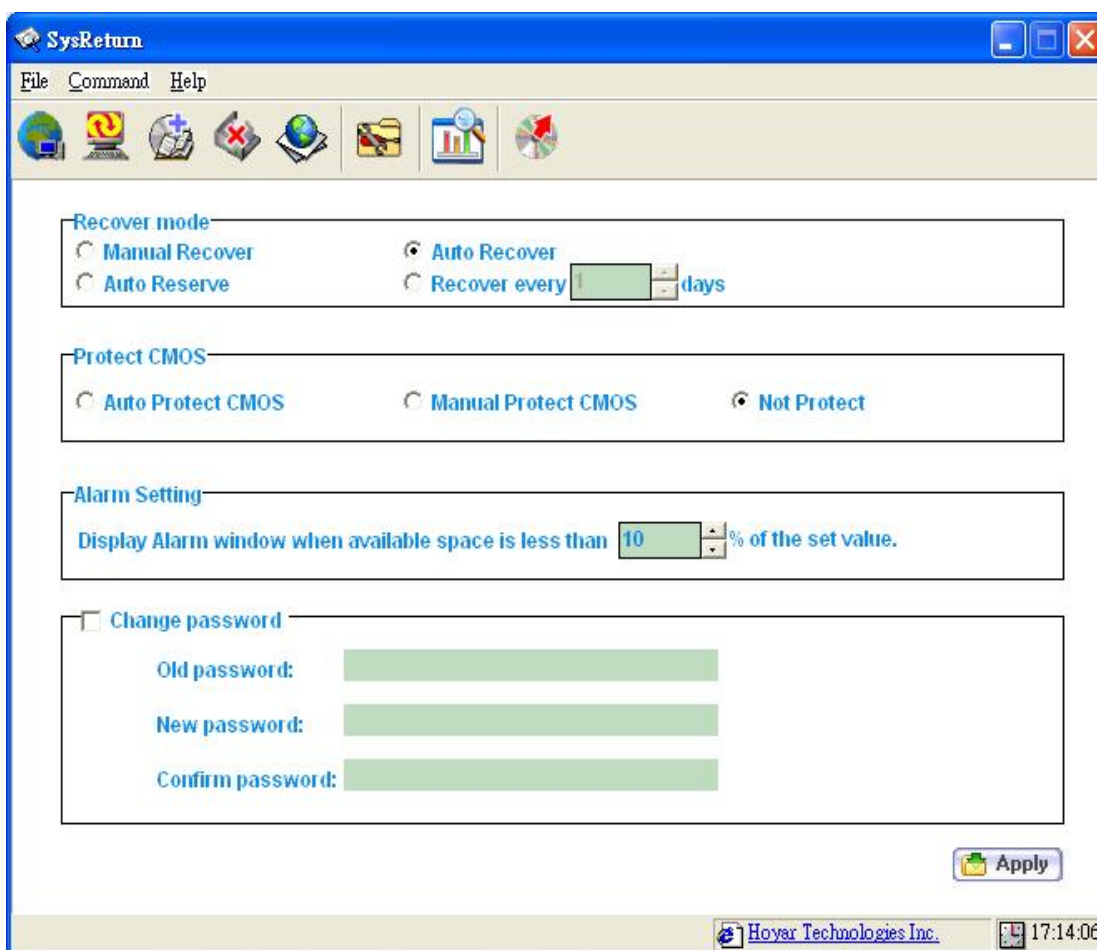
2. Select **Settings...** and the **Password** prompt will appear:



3. Input the password and press **OK** to enter **Information** menu:



4. Press **Parameter** icon  to enter **Parameter** menu as follows:



**SysReturn**

File Command Help

Recover mode

☐ Manual Recover ☒ Auto Recover ☐ Recover every  days

Protect CMOS

☐ Auto Protect CMOS ☐ Manual Protect CMOS ☒ Not Protect

Alarm Setting

Display Alarm window when available space is less than  % of the set value.

☐ Change password

Old password:

New password:

Confirm password:

Apply

Hovar Technologies Inc. 17:14:06

## Recovery Mode

**Auto Recover:** By checking this option, the system will be automatically recovered to latest recovery point every time you reboot the system.

**Manual Recover:** By checking this option, every time when you boot the system, you will be asked to select from three options: Reserve, Recover, and Recover to....

**Auto Reserve:** By checking this option, the system will be automatically reserved every time you boot the system. .

**Time Recover (Recover every xx days):** This option enables the system to be automatically

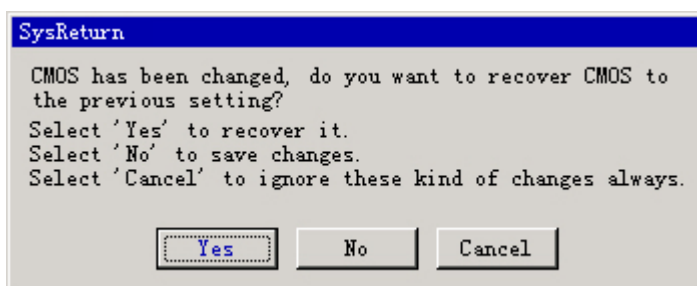
recovered every a certain period, from 1 to 100 days.

[Note:]

Given that the system is set to recover every 7 days. Then the system will automatically recover in the first boot after 12:00am of the 8<sup>th</sup> day. If you don't boot the system until the 10<sup>th</sup> day, the system will be recovered in the first boot on the 10<sup>th</sup> day. Based on this rule, the following recovery will be automatically executed in the first boot after 12:00am of the 15<sup>th</sup> day, 22<sup>nd</sup> day, 29<sup>th</sup> day and etc.

## ***Protect CMOS***

By checking **Protect CMOS**, if any modification is made to CMOS, the system will automatically recover CMOS settings when you reboot your system. After reboot, system prompts the following dialog box:



Press **Yes** to recover CMOS to the original configuration, or press **No** to save changes on the new CMOS configuration. The **Input Password** prompt will appear. Input the correct password to save the modification; otherwise, you will not be able to save these changes.

## ***Alarm Setting***

In **Alarm Setting** field, you are allowed to set an alarm for disk space status. SysReturn will prompt an alarm when available disk space is lower than the value of the pre-set percentage.

## ***Change Password***

By checking **Change password**, you can fill out the Old password, New password, and Confirm password fields in order to change the password.



## Chapter7 Working under DOS

### Operation Notes

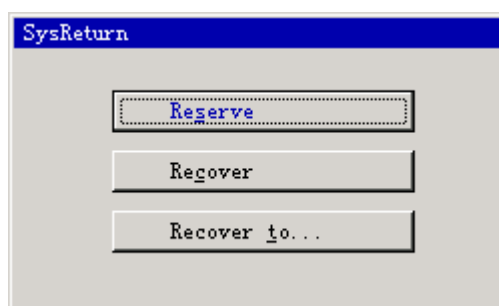
- Windows style interface.
- During system booting, press **Home** key to prompt **Advanced Configuration** interface.
- Supporting operation with both mouse and keyboard.
- To learn the keys:

Keys	Description
Direction Keys	Item selection
Enter	Accept configuration
ESC	Quit or cancel
Space	Switch between boxes
Tab or Shift+Tab	Switch between Tabs

### Operation Guide (taking keyboard operation as an example):

#### Basic Operation

During system booting, the following interface appears:



**Reserve:** Keep the current HD data's status untouched.

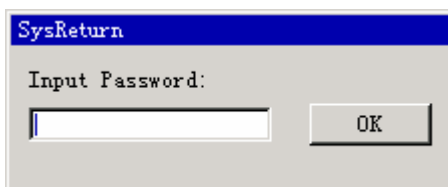
**Recover:** This command will retrieve HD data to the last recorded recovery point.

**Recover to...:** This command will retrieve HD data to the specified recorded recovery point.

#### Advanced Operation

During system boot up, press **Home** key for **Input password** prompt:





Input user password and Press OK to enter **Advance Configuration** Interface:



**Reserve:** Keep the current HD data's status untouched.

**Recover:** This command will retrieve HD data to the last recorded recovery point.

**Recover to...:** This command will retrieve HD data to the specified recorded recovery point.

**Create Point** (Create New Recovery Point): This command will save the current HD data's status as a new recovery point.

**Create Primary** (Create Primary Recovery Point): This command will convert an existing recovery point into a Primary Recovery Point and remove all other recovery points.

**Delete...:** Delete one or several previous stored recovery points.

**Settings...:** Set parameters of SysReturn.

**Uninstall:** Uninstall SysReturn.

## **Reserve**

Keep the current HD data's status untouched.

The following steps are:

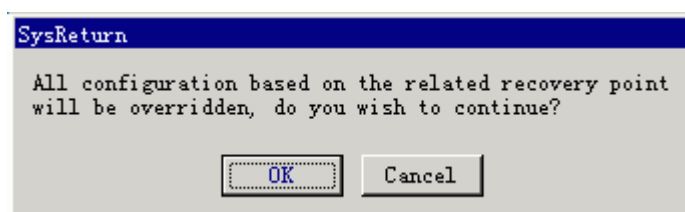
During system booting, select **Reserve** and enter the system.

## Recover

This command will retrieve HD data to the last recorded recovery point.

The following steps are:

1. During system booting, select **Recover** and enter the system:



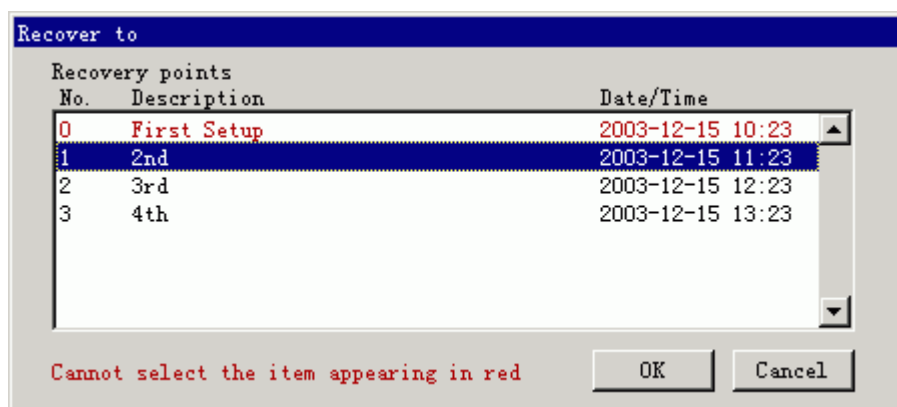
2. Press **OK**.

## Recover to...

This command will retrieve HD data to the last recorded recovery point.

The following steps are:

1. During system booting, select **Recover to...** for the following prompt:



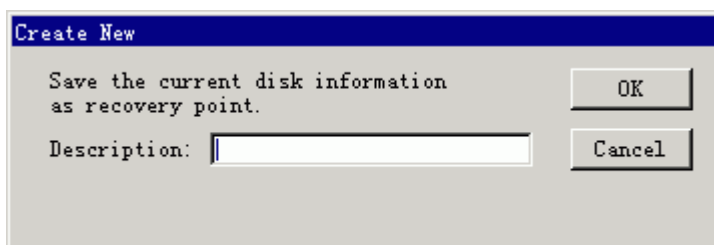
2. Use arrow key to select the desired recovery point, which appears in blue, and then use **Tab** key to select **OK**, and then press **Enter**.
3. After that, the HD will be recovered to the specified status.

### ***Create Point (Create New Recovery Point)***

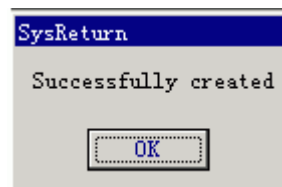
This command will save the current HD data's status as a new recovery point.

The following steps are:

1. During system booting, select **Create Point** for the following prompt:



2. In **Description** Field, input description of recovery point, and use **Tab** key to select **OK**, then press **Enter** for the following prompt:



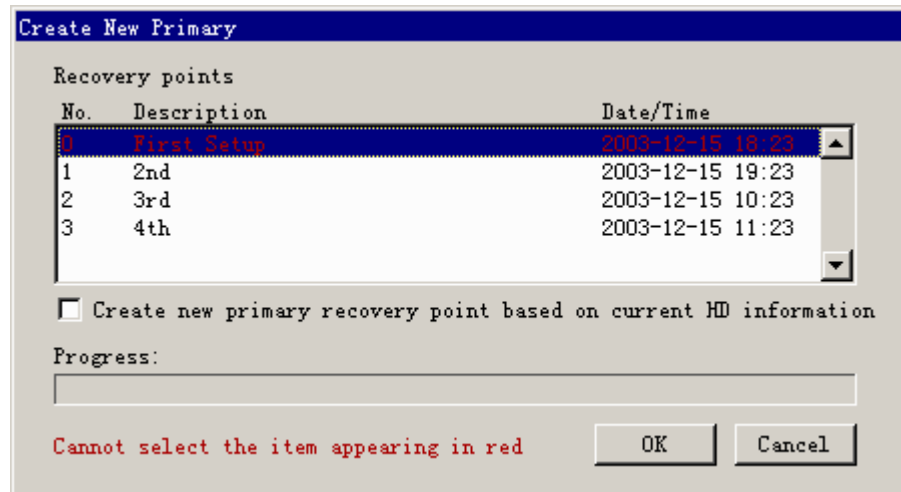
3. Press **Enter** to save current HD information and then enter the system.

### ***Create Primary (Create New Primary Recovery Point)***

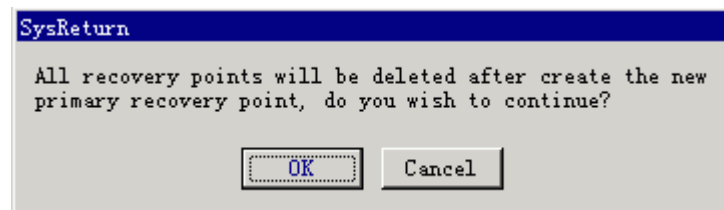
This command will convert an existing recovery point into a Primary Recovery Point and remove all other recovery points.

The following steps are:

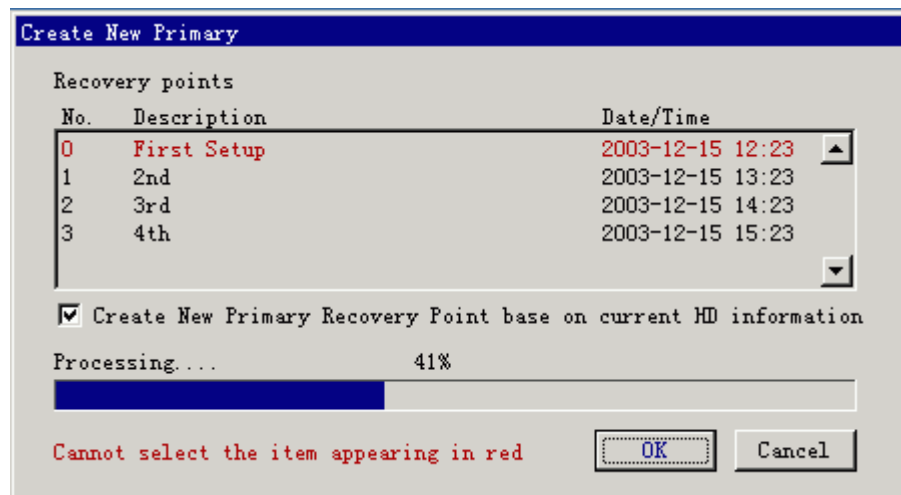
1. During system booting, select **Create Primary** for the following prompt:



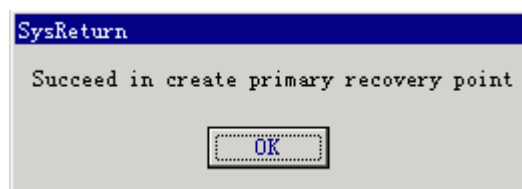
2. Use **Tab** key to select **OK**, then press Enter to start Save statically:



3. Press **OK**, and then progress bar appears in the dialog box:



4. When Save statically complete, the following dialog box prompts:



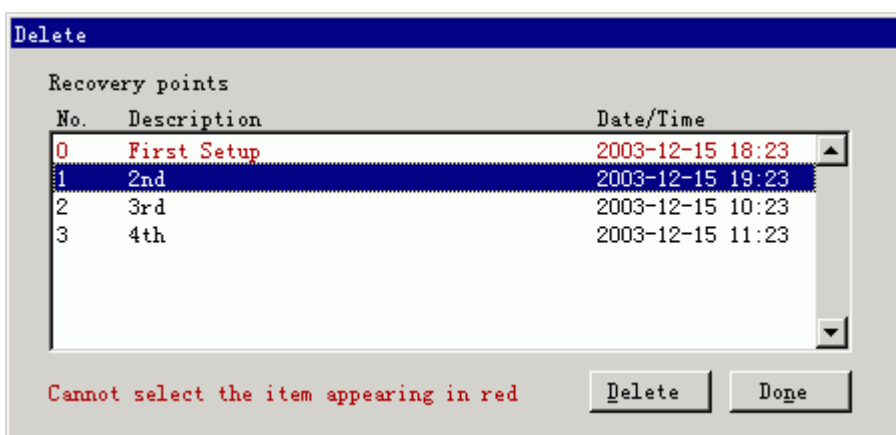
5. Press **OK** to reboot the computer.

## Delete Recovery Point

This command will delete the recovery point specified by user.

The following steps are:

1. During system booting, select **Delete** for the following prompt:



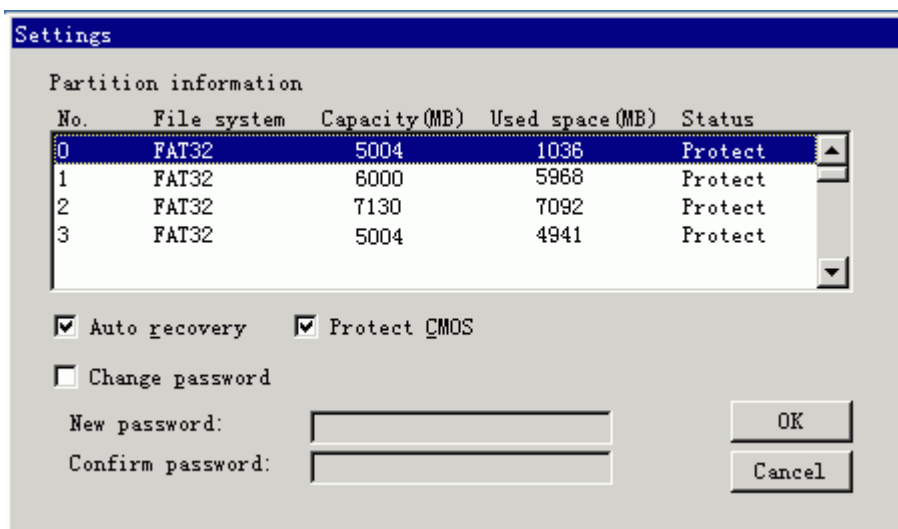
2. Use key to select the desired recovery point, and then use **Tab** key to select **Delete**, then press **Enter**.
3. Press **Enter** to delete selected recovery point and then move back to booting interface.

## Settings

SysReturn allows you to configure the program including Auto Recovery, Manual Recovery, CMOS Protection, password modification.

The following steps are:

During system booting, select **Settings** for the following prompt:



**Auto Recovery:** Use **Tab** key to select **Auto recover** --> use **Space** key to confirm selection --> use **Tab** key to select **OK**--> then press **Enter**. (For manual recovery, keep **Auto recover** option unchecked.)

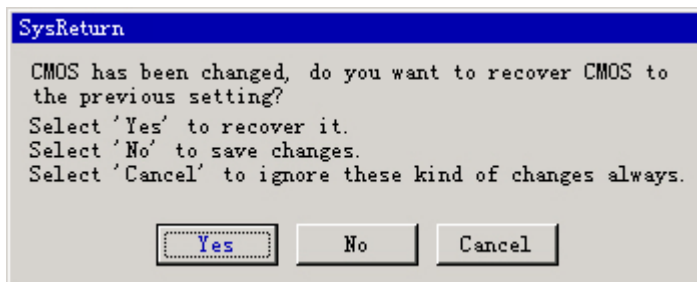
**Protect CMOS:** Use **Tab** key to select **Protect CMOS** --> use **Space** key to confirm selection --> use **Tab** key to select **OK**--> then press **Enter**;

**Quit:** Press **Cancel**;

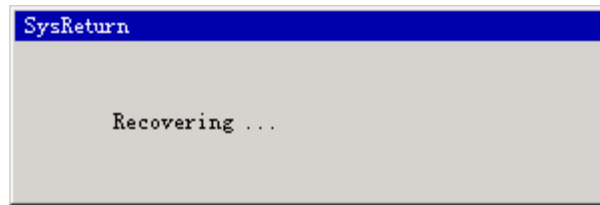
**Change password:** Use **Tab** key to select **Change password** --> use **Space** key to confirm selection --> Input a password in **New Password** field--> Input the password again in **Confirm password** field--> use **Tab** key to select **OK** --> then press **Enter**.

Upon system booting:

1. If selecting **Protect CMOS**, system prompts following dialog box, when CMOS settings is modified;



2. Press **Yes**, then the system restart and prompts:



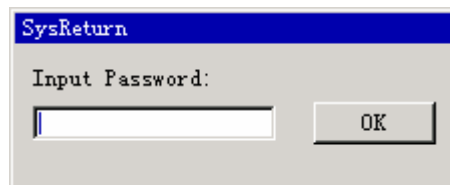
3. After that, the CMOS is recovered.

## ***Uninstall***

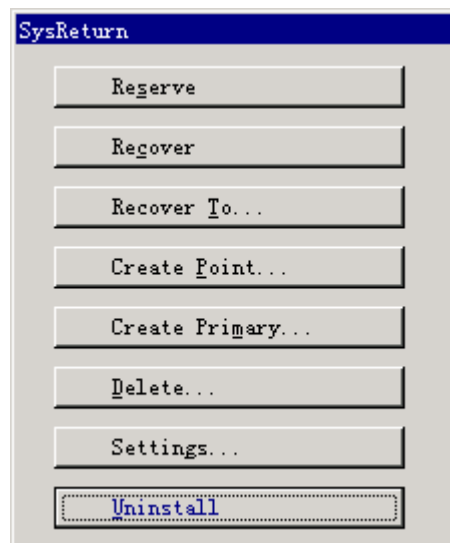
This command will recover the system to Primary recovery point and then remove SysReturn.

The following steps are:

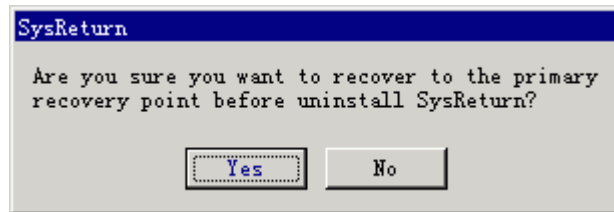
1. Press **Home** key when you start up your computer. The **Input Password** prompt appears:



2. Enter the Password and press **OK** for the following prompt:



3. Choose **Uninstall** to enter the following prompt:



4. Select **Yes** to uninstall SysReturn:



5. SysReturn is successfully uninstalled.



## Chapter8 Frequently Asked Questions

**Q1:** Can I shut down the computer during system recovery?

A1: No. A power surge during recovering might lead to system collapse. If you want to recover the system, please restart the computer and press **Home** key to enter **Configuration** Interface --> select **Recover to...** --> Select the desired recovery point --> press **OK**, then the system will be recovered.

**Q2:** Can I execute more than one command in SysReturn at one time?

A2: No. Every time when you execute a command, you have to reboot your computer in order to have the command take effect. Since the last operation will override your previous configuration, system only executes the **LAST** configuration after the reboot.

**Q3:** How do I install SysReturn if my computer has multi-operating systems installed?

A3: If there are multi-operating systems on your first HD, you must install SysReturn on each operating system. The following steps are:

Choose **There are multiple operating systems on my computer** right after entering the serial number.

Reboot the computer; and enter other operating system to install SysReturn.

If SysReturn has been installed in all operating systems, check **This is the last operating system**. Then click Next and finish installation.

### Notes:

SysReturn will work only when it is installed on the last operating system in your first HD.

**Q4:** What shall I do if I cannot enter Windows?

A4: You may directly enter SysReturn Interface by pressing **Home** key to enter recovery

configuration, and select **Recover to** --> Select a desired recovery point --> Select **OK** and then the system will recover to the status as the desired recovery point.

**Q5:** Do I have to uninstall SysReturn on every system separately if my computer has multi-operating systems installed?

A5: No. You only need to uninstall SysReturn in one operating system and then SysReturn will be totally removed from your computer.

**Q6:** Can I install anti-virus software if SysReturn is installed on my computer?

A6: Yes, but only after you complete SysReturn installation.

**Q7:** What shall I do if my computer doesn't detect the recovery card, although it has been plugged in?

A7: First restart the computer, enter the CMOS, and follow steps below:

Set Boot Sequence as Network->C->A;

Set Boot from LAN/Network or LAN boot first as Enabled;

Set First boot device as LAN/Network or Zip;

Set Boot other device as Enabled or set other device as Enabled;

Then save and exit.

If the recovery card still cannot be found, you may plug it into other blank slot or exchange its slot with network adapter. This is to make recovery card boot before network adapter.