

TV2iCal 1.2.0

TV2iCal is a collection of scripts to schedule recordings in iTele with the help of iCal and TV-Browser. It was developed to make use of the great iCal interface for managing scheduled recordings. It goes beyond what iTeleRecord does.

The iCal-iTele integration can also be used without TV-Browser. Just try importing your existing scheduled recordings from iTele, modify them, add new ones and write them back.

At the time of this writing TV-Browser only supports german TV stations out of the box. There seem to be plug-ins to get other program information though.

Warning: The iCal2iTele script replaces all iTele recordings. Be sure to use iTele2iCal first if you have perviously used iTele itself to schedule recordings.

This manual is based in part on the manuals for iTeleRecord and EyeRecord.
(<http://www.macmediacenter.de>).

Requirements

- TV-Browser <= Version 1.0 (<http://www.tv-browser.org>)
 - CapturePlugin (<http://www.tv-browser.org/plugins.php>)
- Apple iCal (tested with 1.5.5 and 2.0, may work with previous and later versions)
- one of the following:
 - Mac OS X 10.3 with Property List Tools 1.0.3
(<http://www.latenightsw.com/freeware/PListTools/>)
 - Mac OS X 10.4 or higher
- iTele Software (<http://www.defyne.org/dvb/iTele.html>)
- MultiMedia Input device drivers for Mac (<http://www.defyne.org/dvb/driver.html>)
- Any hardware supported by MMInput and iTele

Change-Log

Version 1.2.0 (2005-08-03)

- iCal2iTele and iTele2iCal
 - on Mac OS X 10.4 Late Night Software's Property List Tools is no longer required
 - code unification and cleanup; may have fixed some bugs
 - completely rewritten corrections for recurring events
 - iCal2iTele now checks if iTele is running or recording and (optionally) starts iTele after exporting is complete
 - iTele2iCal now imports start and end dates that were saved incorrectly by iTele
- TVB2iCal
 - compatible with TV-Browser 1.1a2
 - documentation updated accordingly (see below)
 - code unification and cleanup
 - bug fixes
- rename iTele Recordings via iCal lookup
 - this new tool takes iTele recordings, looks for each event in iCal and renames the file accordingly
 - it's a bit smart about errors but not very much so :)
 - iTele's Recording Names need to be set up correctly for this (see below)

Version 1.0.2 (2005-05-03)

- improvements to iCal2iTele

- reoccurring events are now set to start on the day the script is run. This way iTele doesn't have to search as long for the next time the event should be recorded.
- miscellaneous cleanup

Version 1.0.1 (2005-05-01)

- correction in iCal2iTele
 - fixed a work-around needed for iCal 1.5.5
 - now works with iCal 2.0 (Tiger) which doesn't need the work around anymore

- never publicly released

Version 1.0.0 (2005-04-24)

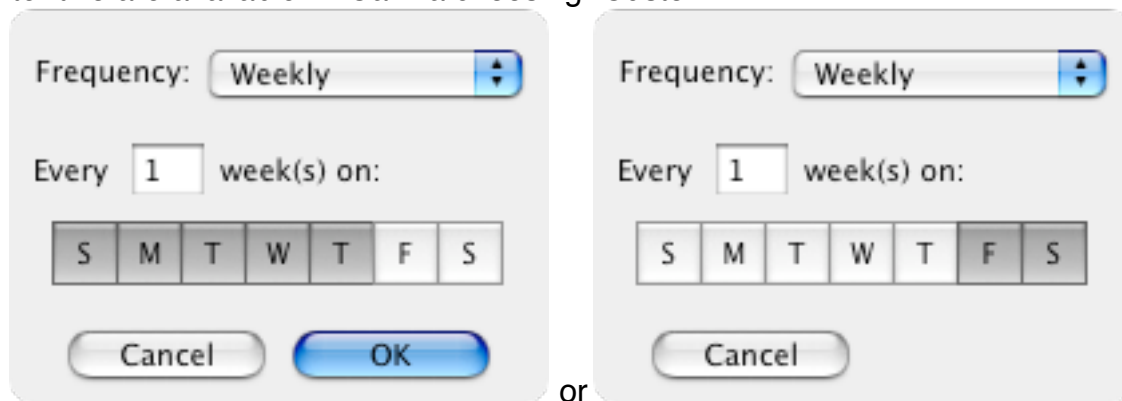
- speed optimization of iCal2iTele
- channel name find/replace lists in iCal2iTele and iTele2iCal
- added sorting by start time to iCal2iTele

Version 1.0.0b1 (2005-04-22)

- initial release

Features

- Deleting a programmed recording in TV-Browser deletes it in iCal. This works even if the recording's start time and end time were modified. The default tolerance for this is 20 minutes.
- Use iTele2iCal to import your schedule recordings from iTele into iCal.
- Use iCal2iTele to export your schedule recordings from iCal to iTele. This preserves the repeat settings that are supported by iTele: daily, weekly, weekdays, weekends. The latter two are available in iCal via choosing "Custom...":



- If you have imported your scheduled recordings from iTele into iCal you can update them with additional information from TV-Browser simply by using the capture plug-in with TVB2iCal and schedule that show.

Restrictions

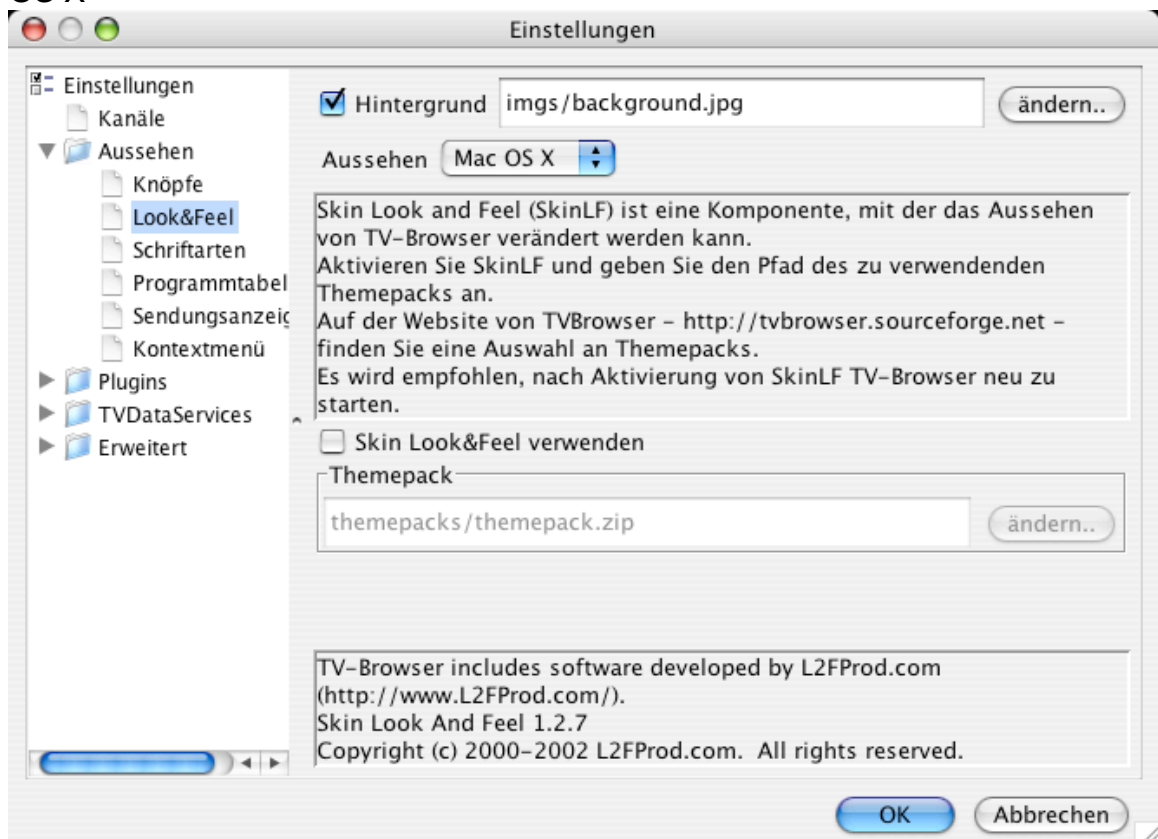
- iCal2iTele works only if iTele is not open. If it is, iTele will write over the exported data when quit and load that upon next being started.
- **The iCal2iTele script replaces all iTele recordings. Be sure to use iTele2iCal first if you have used iTele to schedule recordings perviously.**
- iCal2iTele is a bit on the slow side. This is solely due to a complicated method of calculating the right date format that iTele needs. This format contains the local difference to GMT. As this difference changes twice a year in many countries (summer time/winter time) iCal2iTele will have to get this information for the each date specified. This is not normally supported in AppleScript and has to be worked around. The problem this causes is that if iTele is launched before the script has finished it will retain it's previous scheduled recordings.
- You need to have Property List Tools installed

- If anyone has suggestions how to remove these limitations, please post them at <http://www.macmediacenter.de>.

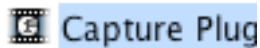
Usage

You can set up iTele and TV-Browser any way you like. If you have both of them working, do the following to get all of TV2iCal to work:

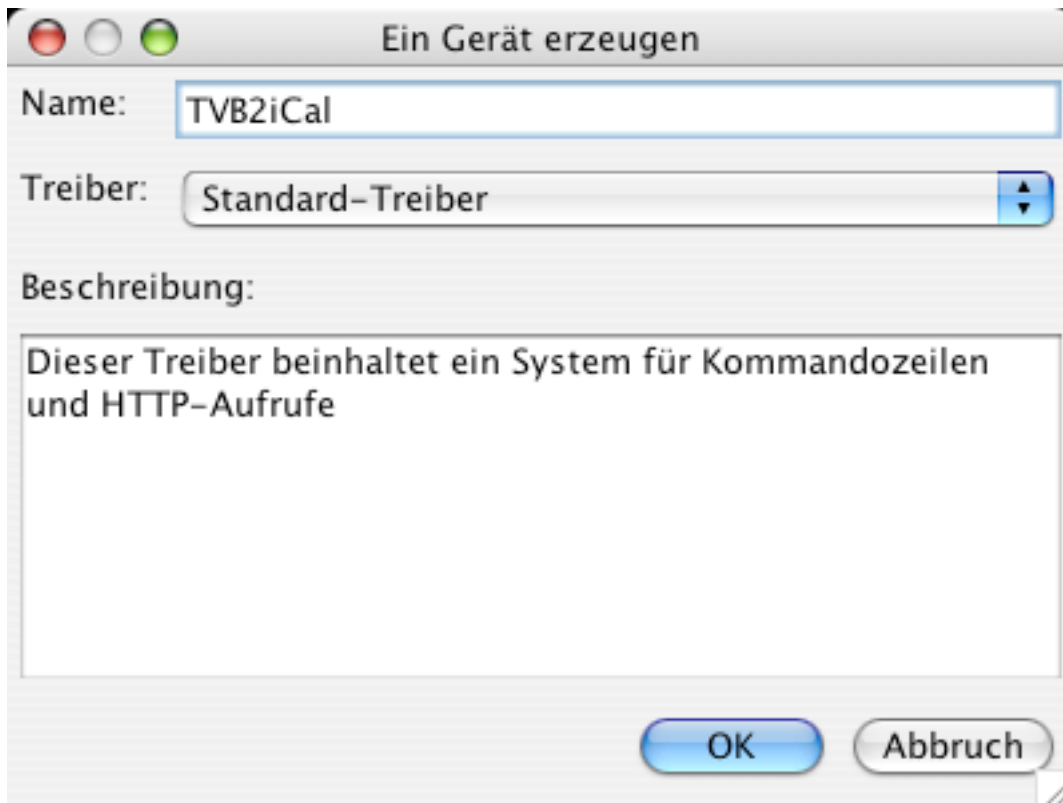
1. Choosing the location of the iTele software, TV-Browser and the TVB2iCal folder is up to you (see below).
2. The folder "iCal" can be placed anywhere. I recommend putting the folder into "~/Library/Scripts/" (~ is short for your Home folder). Then you can use "Install Script Menu" from "/Applications/AppleScript/Install Script Menu.app" and run the scripts via the menu bar. This is more convenient than opening and running them in ScriptEditor every time.
3. Get Property List Tools from <http://www.latenightsw.com/freeware/PListTools/> and put it into ~/Library/ScriptingAdditions/ (you may have to create this folder).
4. Drag the TVB2iCal folder to your HD. Choose any folder you like. The path to the script should not contain any spaces though. If you don't know what this means just put the TVB2iCal folder in your home folder (Finder menu: Go>Home).
5. Open TV-Browser
 - 5.1. To have the best Mac experience go to Preferences and set "Aussehen" to Mac OS X



6. Click on Capture Plugin in the "Plugins" folder.

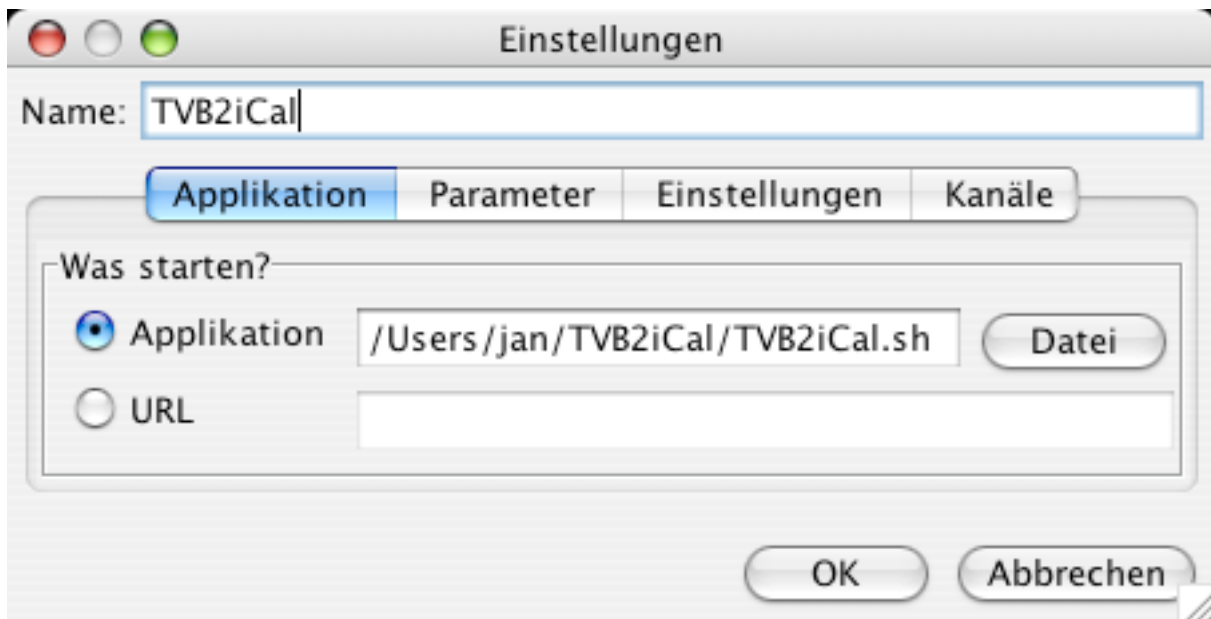


Here you have to add a device to TV-Browser. Click on "Geräte" and then on "Gerät hinzufügen". Choose a name. In the Pull-Down-Menu choose "Standard-Treiber". Then click "OK".



7. Next choose your new device from the list and click "Gerät konfigurieren".

The configuration window opens. In the tab "Applikation", choose "Applikation" and click on "Datei" to choose the file TVB2iCal.sh from the TVB2iCal folder or enter the path to the TVB2iCal.sh file manually.



8. Choose the tab "Parameter".

8.1. For TV-Browser 1.0 the parameters are as follows

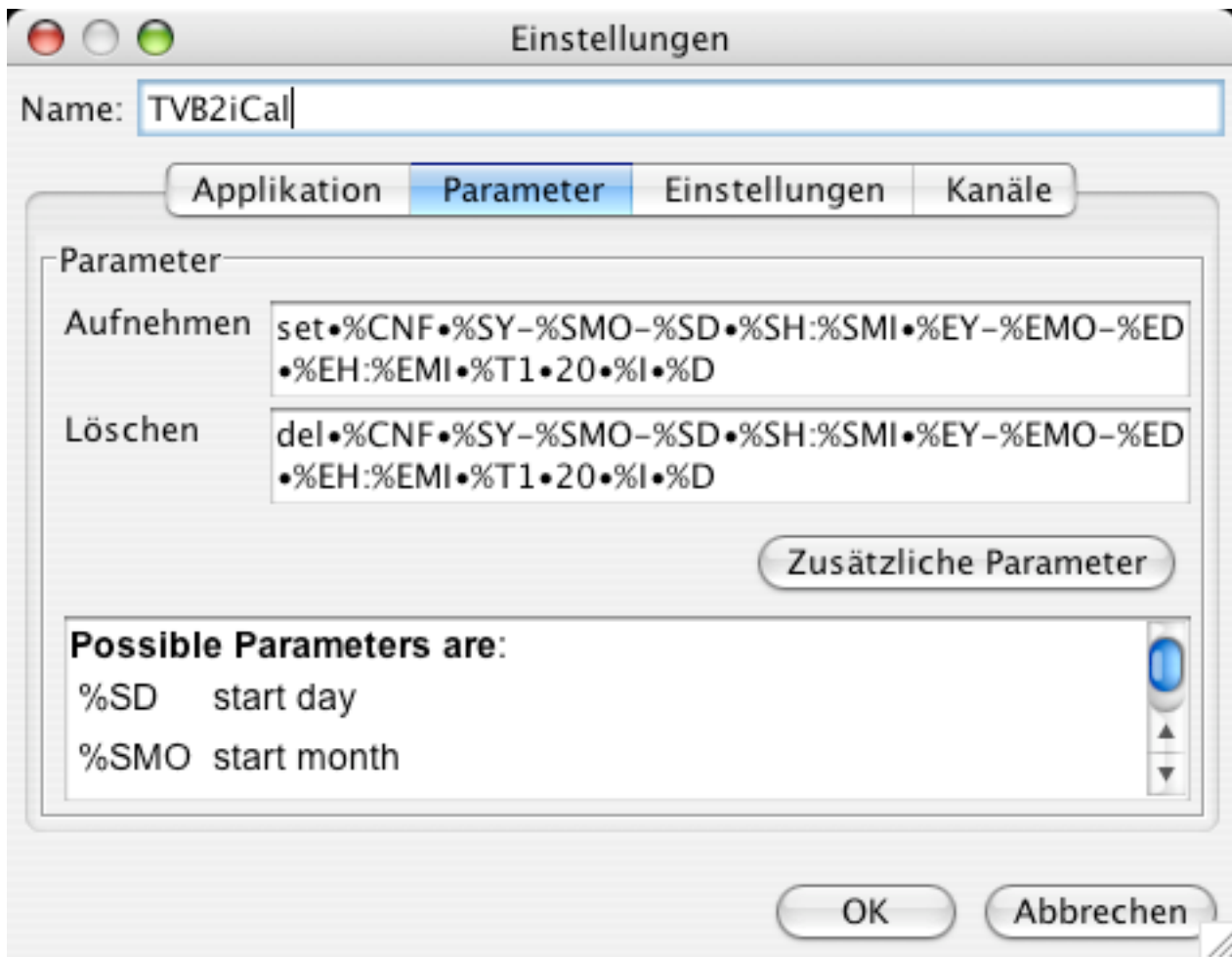
Enter the following into the text-box "Aufnehmen":

```
set•%CNF•%SY-%SMO-%SD•%SH:%SMI•%EY-%EMO-%ED•%EH:%EMI•%T1•20•%I•%D
```

and the following into the box "Löschen":

```
del•%CNF•%SY-%SMO-%SD•%SH:%SMI•%EY-%EMO-%ED•%EH:%EMI•%T1•20•%I•%D
```

(You can just copy and paste this.)



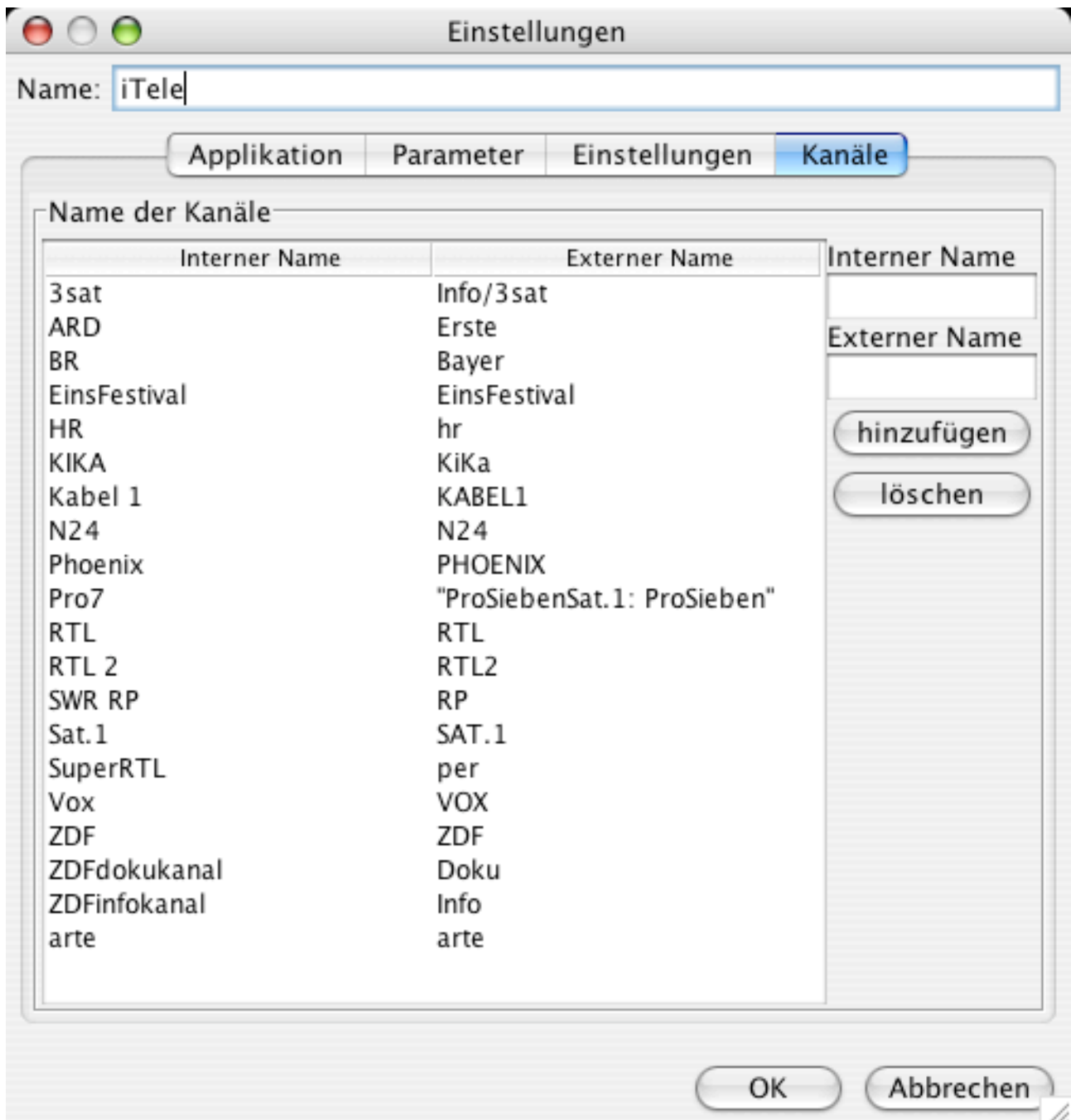
- 8.2. For TV-Browser 1.1 the parameters are different due to changes in the capture plug-in:

```
set•{channel_name_external}•{start_year}-{leadingZero(start_month, "2")}-
{leadingZero(start_day, "2")}•{leadingZero(start_hour,
"2")}:{leadingZero(start_minute, "2")}{end_year}-{leadingZero(end_month, "2")}-
{leadingZero(end_day, "2")}{leadingZero(end_hour,
"2")}:{leadingZero(end_minute, "2")}{title}•{short_info}•{description}•{"Länge:
"}{length_minutes}:{leadingZero(length_sec, "2")}{original_title}•{episode}•
{original_episode}
```

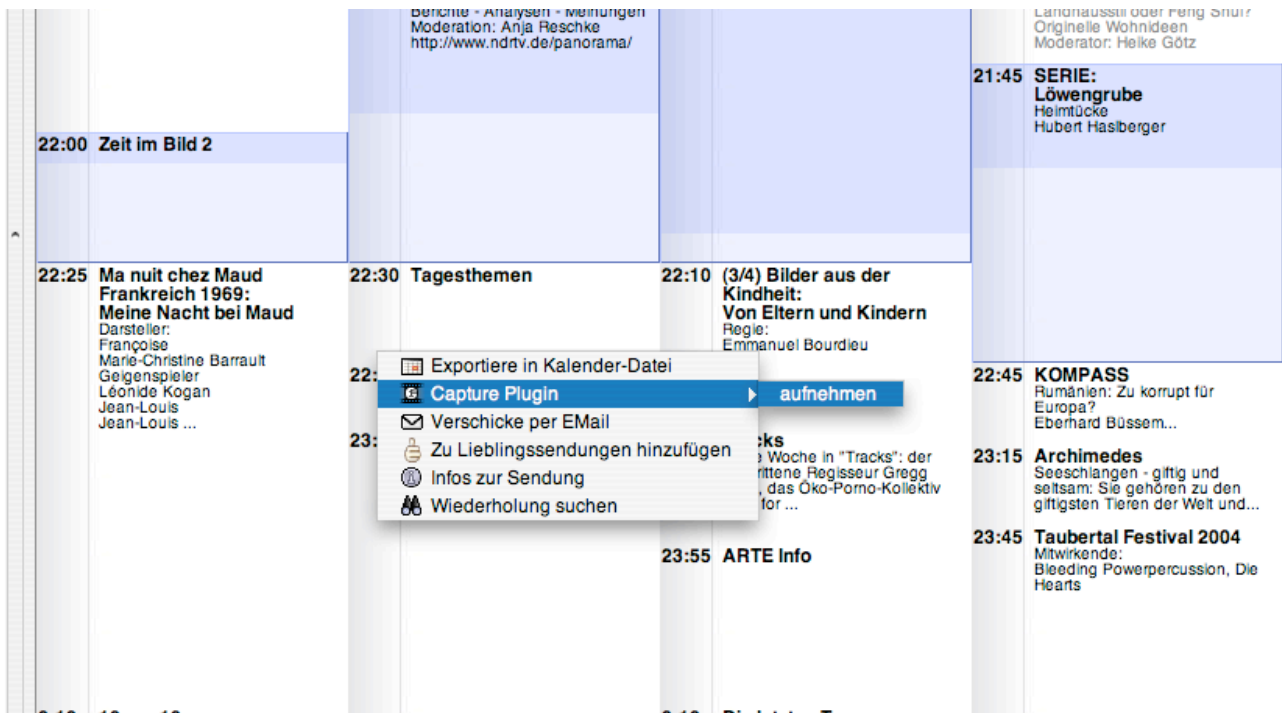
```
del•{channel_name_external}•{start_year}-{leadingZero(start_month, "2")}-
{leadingZero(start_day, "2")}•{leadingZero(start_hour,
"2")}:{leadingZero(start_minute, "2")}{end_year}-{leadingZero(end_month, "2")}-
{leadingZero(end_day, "2")}{leadingZero(end_hour,
"2")}:{leadingZero(end_minute, "2")}{title}•{short_info}•{description}•{"Länge:
"}{length_minutes}:{leadingZero(length_sec, "2")}{original_title}•{episode}•
{original_episode}
```

9. You have to assign external names to TV-Browser's internal names. These should match the channel names you normally use to record in iTele.

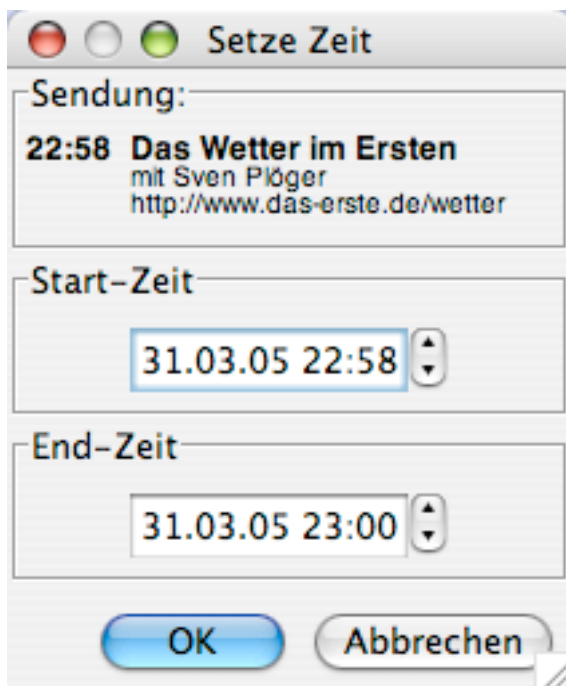
To do this click on "Kanäle". On the left you see the names of the stations. Choose one by clicking on it. On the far right you can enter the a name that matches the channel name in iTele. Then click on "hinzufügen". Do this for all the stations you want to record.



10. You are now done with the setup. You can move on to programming your first recording.
11. In the normal TV-Browser view right-click on the show you want to record. Choose "Capture Plugin -> Your_Device -> aufnehmen"

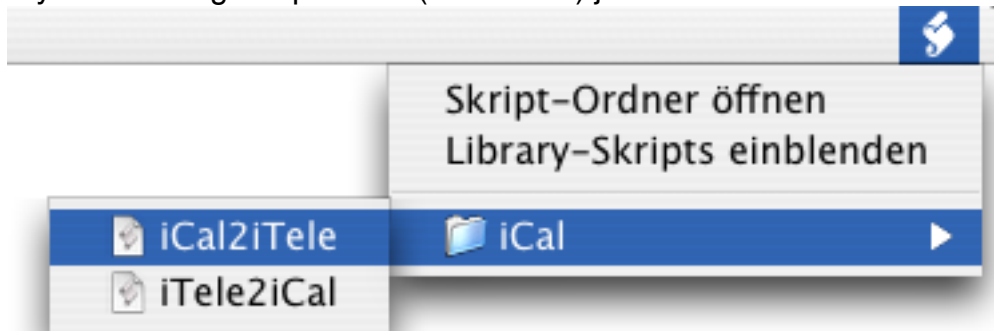


In the next window you can fine-tune the timing of your recording. when you click "OK" your done. The new event will show up in iCal.

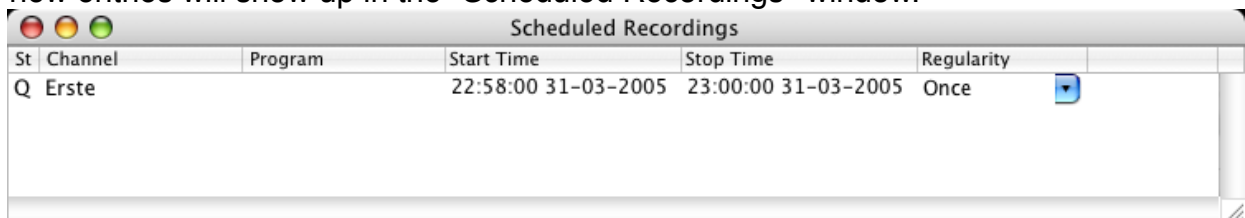


12. Now that you have all this info in iCal you can export it to iTele with the help of iCal2iTele. This doesn't work if iTele is open. So the first step in scheduling a recording is to close iTele.

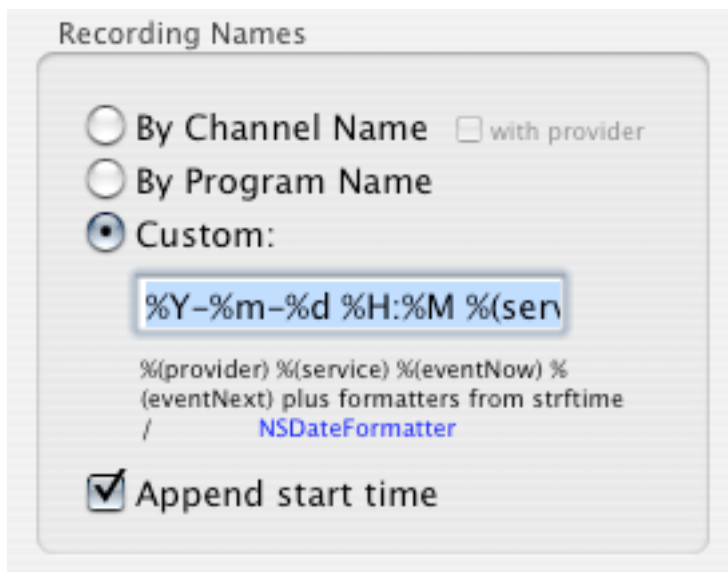
13. If you are using Script Menu (see above) just choose "iCal2iTele" from the folder "iCal".



14. Now that you have programmed the recordings in iTele, you can start iTele again. The new entries will show up in the "Scheduled Recordings"-window.



15. To use "rename iTele Recordings via iCal lookup" iTele's Recording Names need to be set up like this:



The custom field contains this: %Y-%m-%d %H:%M %(service) %(eventNow)

License

You may do whatever you like with this free software and its source code, including using it or derivations of it in commercial products and trying to sell it. But you use it at your own risk, i.e. I don't guarantee that it's going to work, not crash your computer or delete/ data. And if you redistribute the source code or a derivation of it then you must acknowledge (<http://www.macmediacenter.de>) as its origin.

Sorry for the rip-off John ;)