

## SONY DPP-MP1 Windows XP Printer Driver

### Installing the printer driver

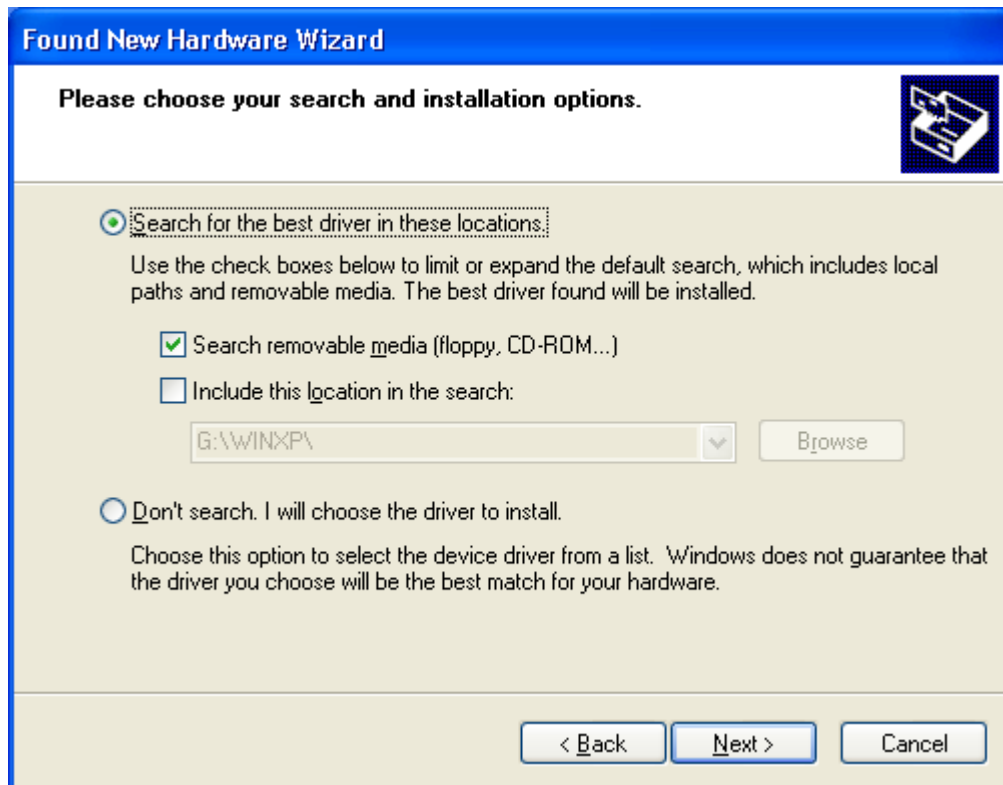
1. Connect the DPP-MP1 to the PC.
2. Turn ON the power of the DPP-MP1.
3. Turn ON the power of the PC.
4. The following screen will be shown when Windows XP starts up.



If you are using a USB connection and this dialog box is not displayed, follow the procedures below.

- The DPP-MP1 power should be turned ON and connected to the PC.
- Select the "Control Panel" from "My Computer".
- Select "System" and open the "System Properties" window.
- Click on the "Hardware" tab.
- Click on the "Device Manager" button.
- The "Device Manager" will be displayed.
- Click on the "+" on the left side of "Universal Serial Bus Controllers".
- Select "USB Printing Support" and delete it.
- Restart the PC

5. Select "Install the software automatically [Recommended]" then click "Next". The following screen will be shown.



6. Select "Search for the best driver in these locations".

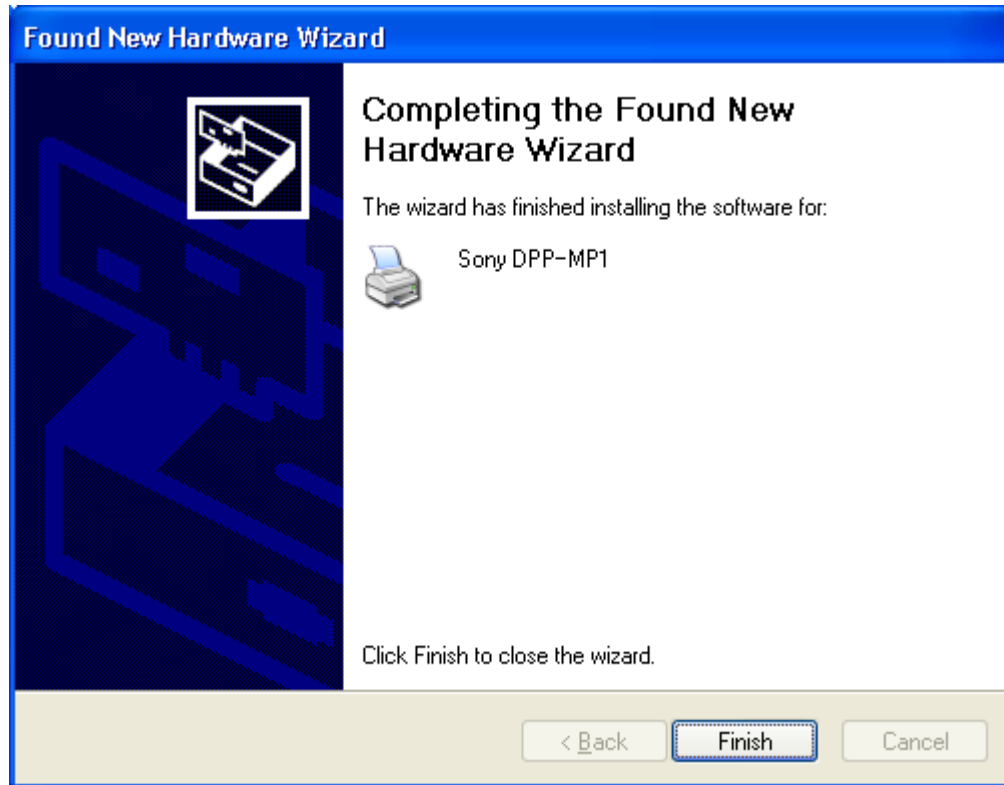
If the Printer Driver is on a floppy disc or CD-ROM, select "Search removable media..."

If it is located in a folder on the hard disk, select "Include this location in the search" and designate the folder with the "Browse" button.

7. Click on "Next". The screen below will be shown.



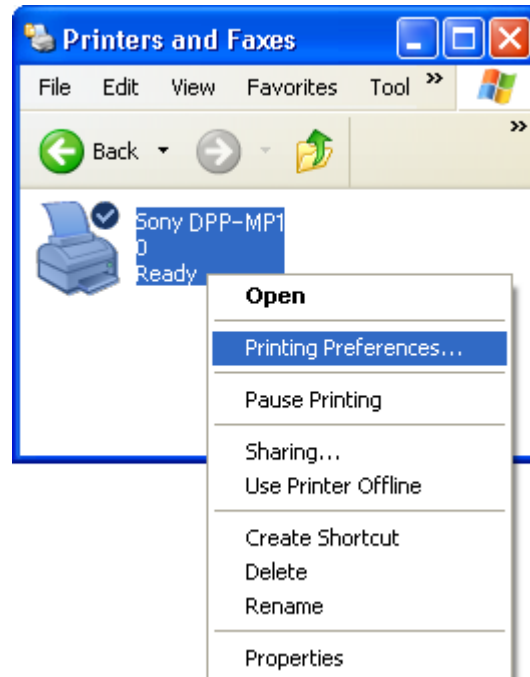
8. Click "Continue Anyway". After the file transfer is complete, the following dialog box will be displayed.



9. Click on "Finish". The installation is now complete.  
Restart the PC.

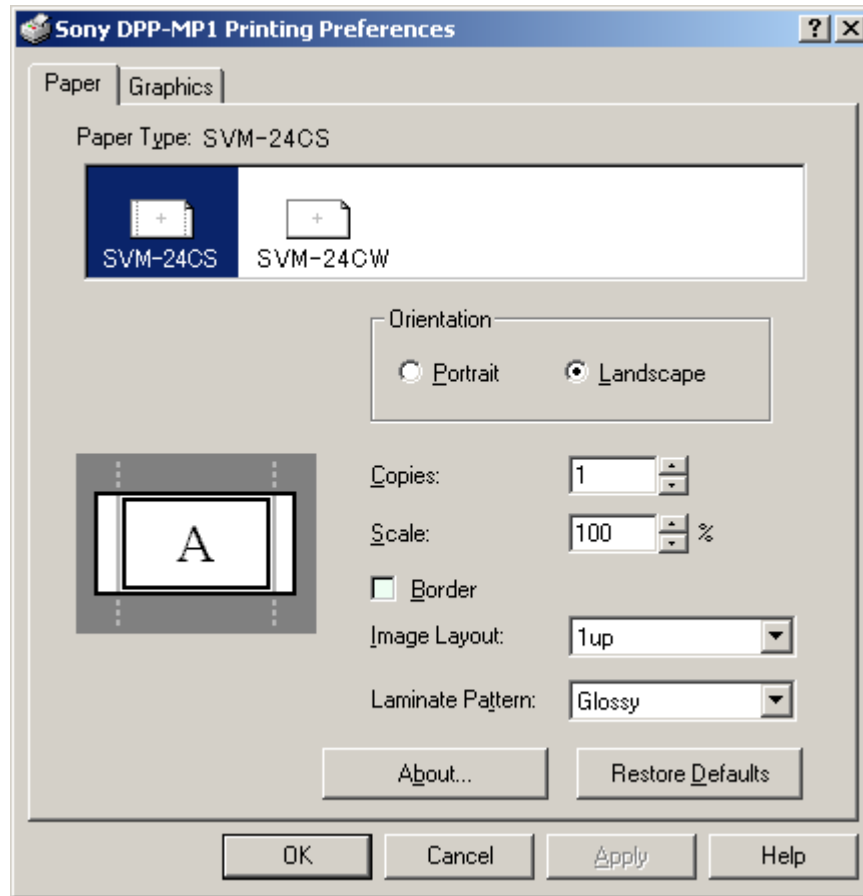
## Setting up the printer

"Paper Size", "Orientation", and other printer settings are setup with "Printing Preferences..." Click on "Sony DPP-MP1" in the Windows XP "Printer and Faxes" folder with the right mouse button and select "Printing Preferences..."



The "Sony DPP-MP1 Printing Preferences" sheet opens and following tabs and items for setting.

## Paper Tab



### <Paper Type>

Select the type of Print Pack from Photo paper "SVM-24CS" or Photo stickers "SVM-24CW".

### <Orientation>

Select "Portrait" or "Landscape" for the print direction.

### <Copies>

A range from 1 to 25 can be set.

### <Scale>

The enlargement and reduction ratio can be specified. Set a range between 10 to 400%.

### <Border>

Select this check box to print a border in the margins.

### <Image Layout>

Select the number of images to print on one sheet: 1up, 2up, 4up and 8up.

### <Laminate Pattern>

The following 3 types can be selected for the print surface laminate condition.

Selecting "Glossy" will print a glossy finish.

Selecting "Texture" will print a textured finish.

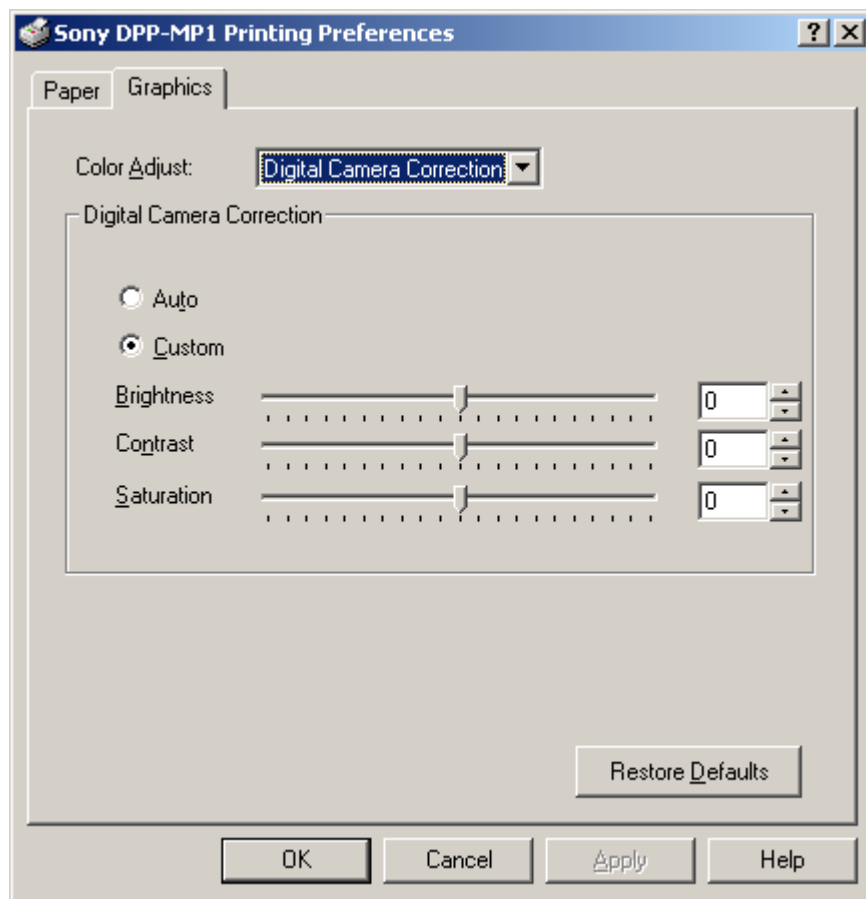
Selecting "Matte" will print a matted finish.

## Graphics Tab

This tab presents adjustments for image color, brightness, and so forth.

From the "Color Adjust" pull-down list, you can select " Digital Camera Correction ", "Color Balance", "Sharpness" or "Color Correction", and then adjust the image with the settings provided for each selection.

### <Digital Camera Correction>

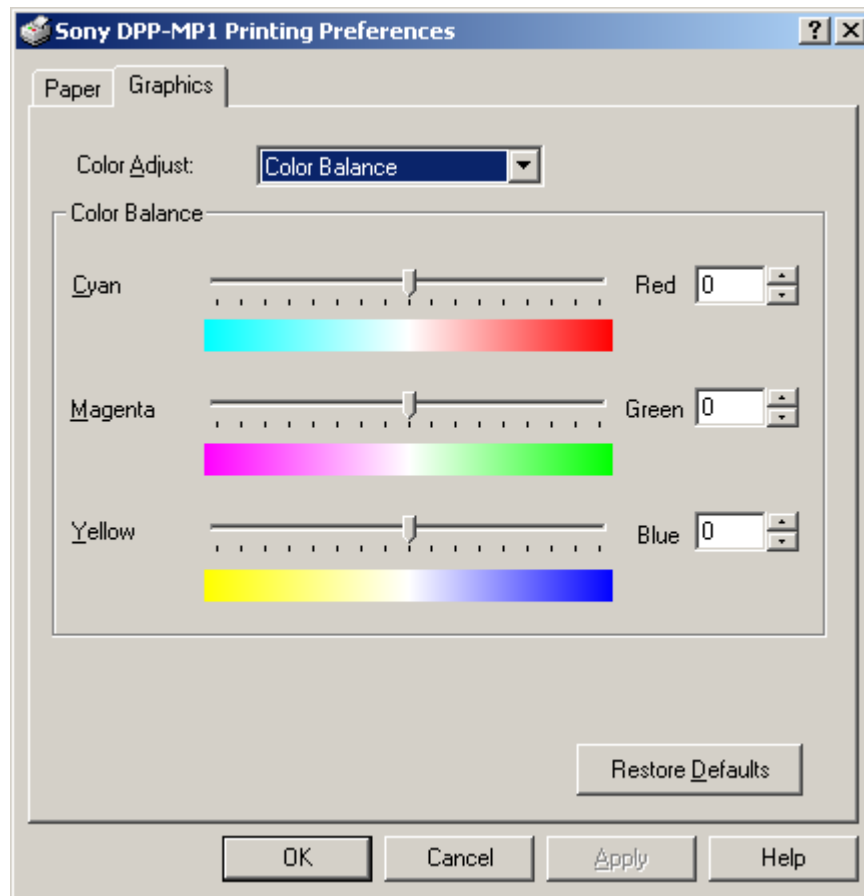


When printing an image captured with a digital camera, you can use the "Brightness", "Contrast", and " Saturation" settings to adjust the image.

Select "Auto" to achieve the best possible processing for a digital image.

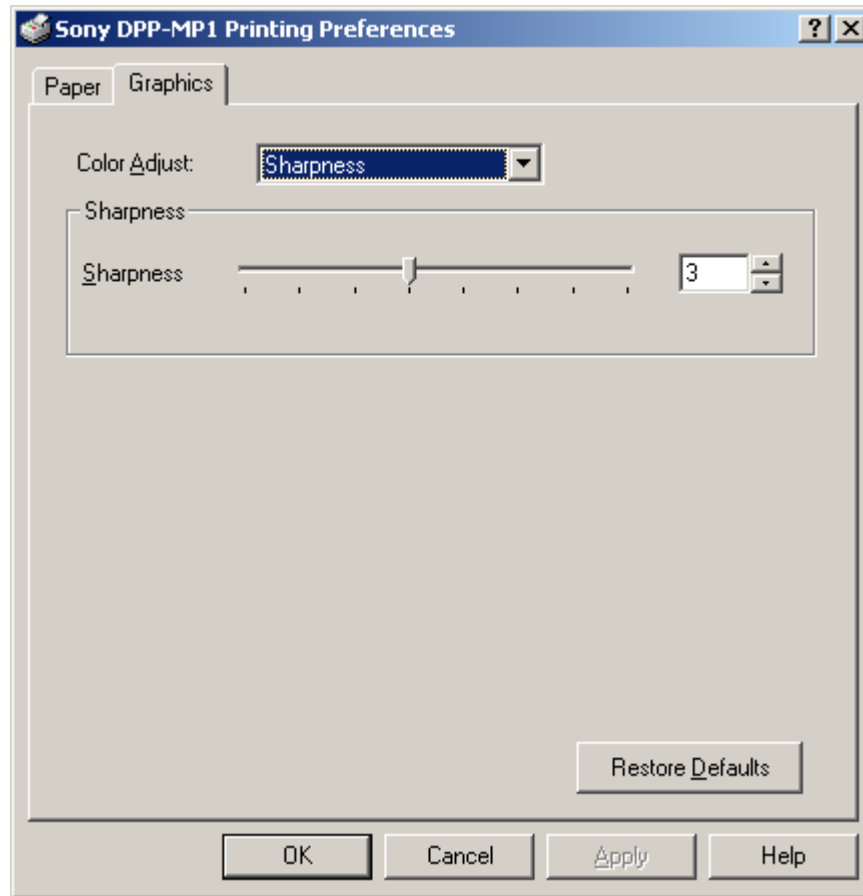
Select "Custom" to manually adjust the "Brightness", "Contrast", and "Saturation" for the image.

<Color Balance>



You can adjust the balance for each color by dragging the slider to the left or right, entering a value directly into a box, or clicking the arrows next to a box to increase or decrease the setting.

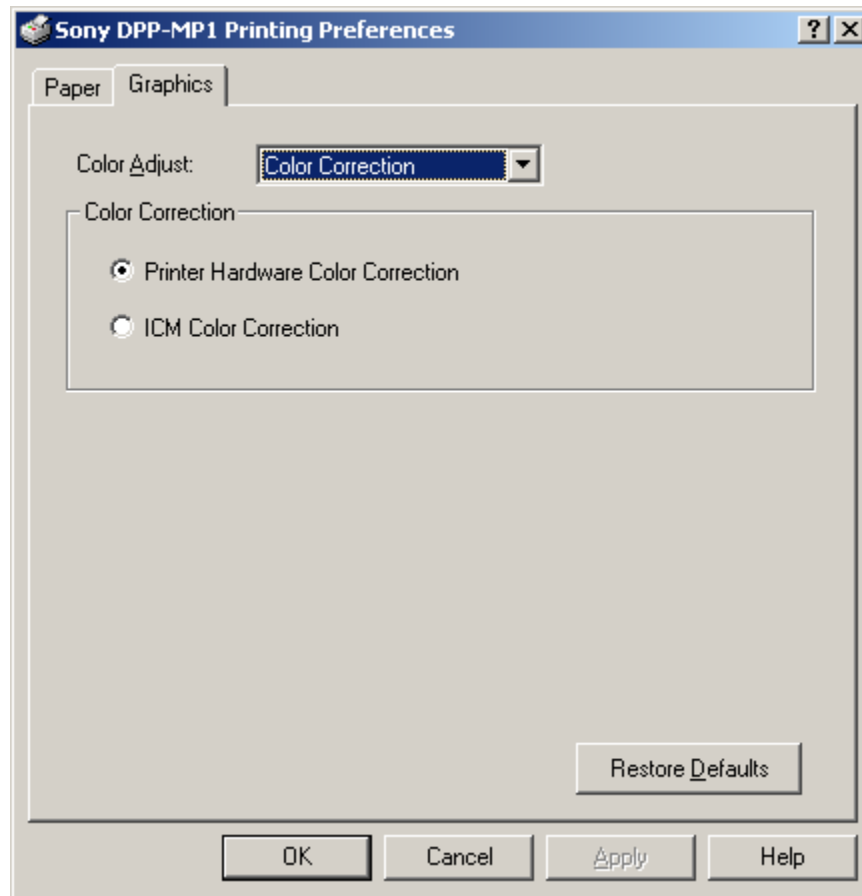
<Sharpness>



You can adjust the sharpness of the image outline by dragging the slider to the left or right, entering a value directly into a box, or clicking the arrows next to the box to increase or decrease the setting.



<Color Correction>



Select the color correction method.

Select "Printer Hardware Color Correction" to have the printer correct the color automatically.

Select "ICM Color Correction" to use a color profile for color correction.