

Image To SQL

Save Image File to SQL Table

This tool helps you to save image file to a binary column in SQL Server table.

SQLMgmt.com



1. Prerequisite

The following component is required to run this tool properly. If you do not have this component on your machine, you can download from Microsoft Download Center.

- .NET Framework 4.0

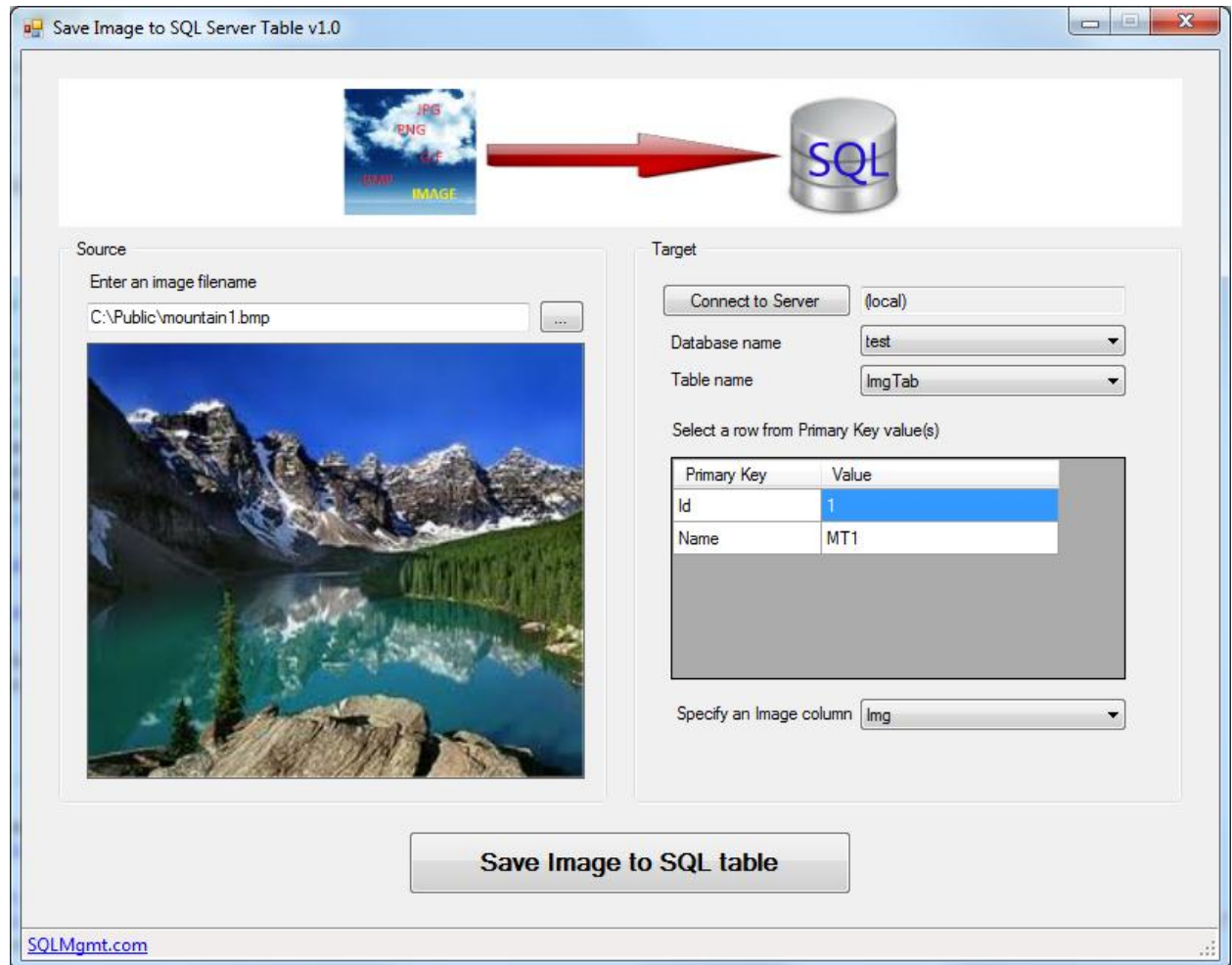
2. Image to SQL Features

- Save any image file such as .JPG, .PNG, .BMP, .GIF to SQL Server table.
- Image file is saved to a varbinary column (or image column)
- Supports SQL Server 2005, SQL Server 2008, SQL Server 2008 R2 or later.
- User can specify input image file and table/column target in easy UI.
- User can specify where to save image file by setting primary key value(s) of the user table in easy UI.

3. How to Save Image File to SQL Table

ImageToSQL.EXE is a GUI application which saves any image file (or technically speaking, any binary file) to a SQL Server table.

- (1) Run ImageToSQL.EXE
- (2) In Source section, click browse (...) button and select any image file.



- (3) In Target section, click [Connect to Server] button.
- (4) In [Connect to Server] dialog, type server name and set login info. Click [Connect] button.
- (5) Select Database name in the combo box.
- (6) Select target table name.

NOTE: SQL Table should have primary key. The target row should already exist before saving image file to image column. If no row exist in the table, insert other data (except image data) into the table. ImageToSql updates a row, not inserting.

- (7) Select scripting options such as Script Schema, Script Data. By default, Script Data is not selected. If you want to move all data in the CE database to other database system, you can generate scripts for data by selecting Script Data option.
- (8) Once a table is selected, Primary Key columns of the table will be displayed in Grid control. In order to specify a specific row of the table, type values of the primary key columns.
- (9) Select a target Image column name in the combo box. Only binary columns will be shown in the combo box.
- (10) Click [Save Image to SQL Table] button. Your image data will be saved to SQL table.

NOTE: Your bug report or any suggestion would be appreciated.

<http://www.sqlmgmt.com/contact.aspx>