



Fidelizer

"Pure Fidelity" for Windows

User Guide

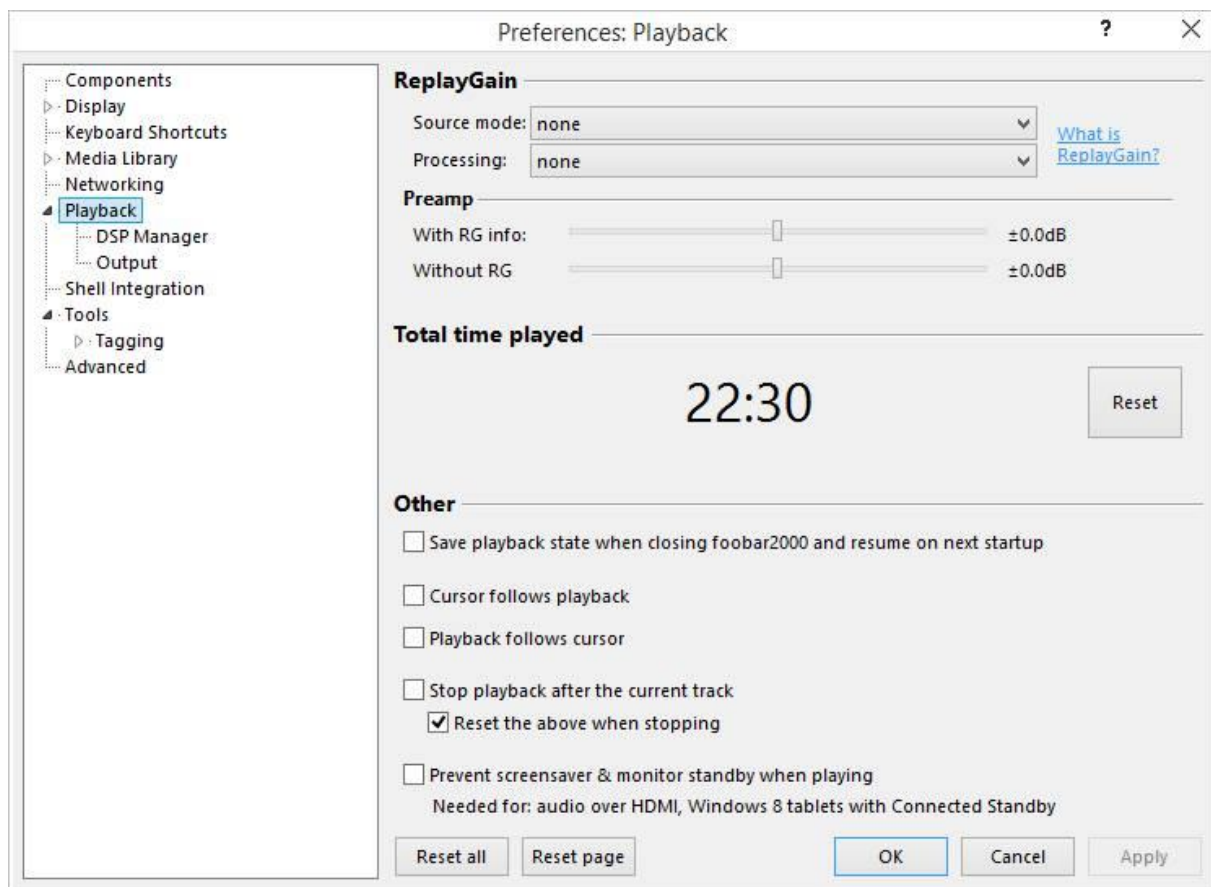
This will help you setting up your system for better sound with Fidelizer. Before we start, please read [how Fidelizer enhances Windows sound quality](#) to help you understand Fidelizer options for future references. After that, you can follow the step-by-step instructions below.

STEP 1: Setting up audiophile environment

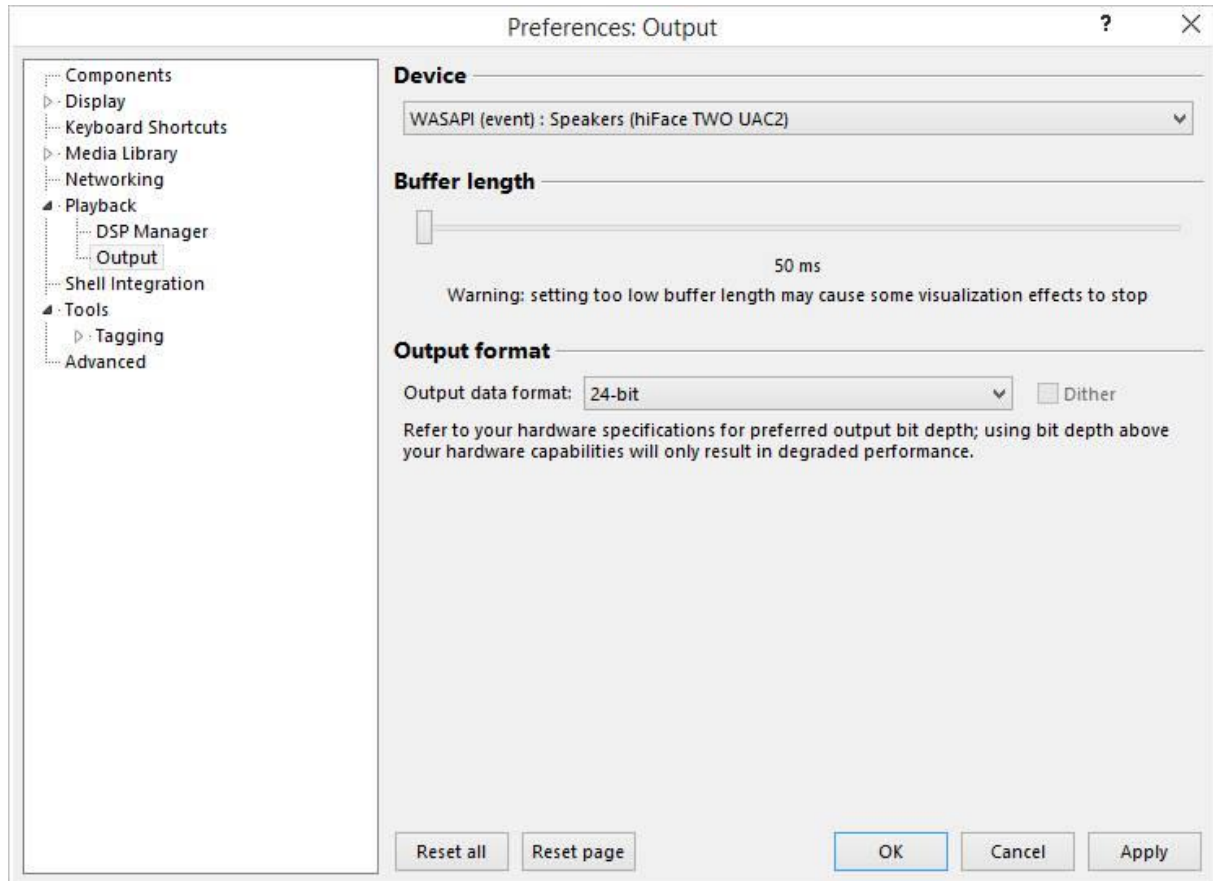
Although Fidelizer can instantly enhance Windows sound quality with just one click. However, setting up audio software for better sound before using Fidelizer is recommended. To demonstrate how to setup audio software for better sound quality, we'll use foobar2000 as an example.

1. Download and install [foobar2000](#) with [WASAPI component](#) and for bit-perfect playback support

2. Open setup Preferences and set ReplayGain to "none" in Source mode and Processing as shown below.



3. Setup output device with WASAPI (event), change output data format to highest supported bit-depth, and slide down Buffer length to 50ms. Increase to 100/200/500ms if you face stuttering.



4. Configure Advanced settings with the following options:

Full file buffering up to (kB): Highest possible (I entered 99999999999999999999)

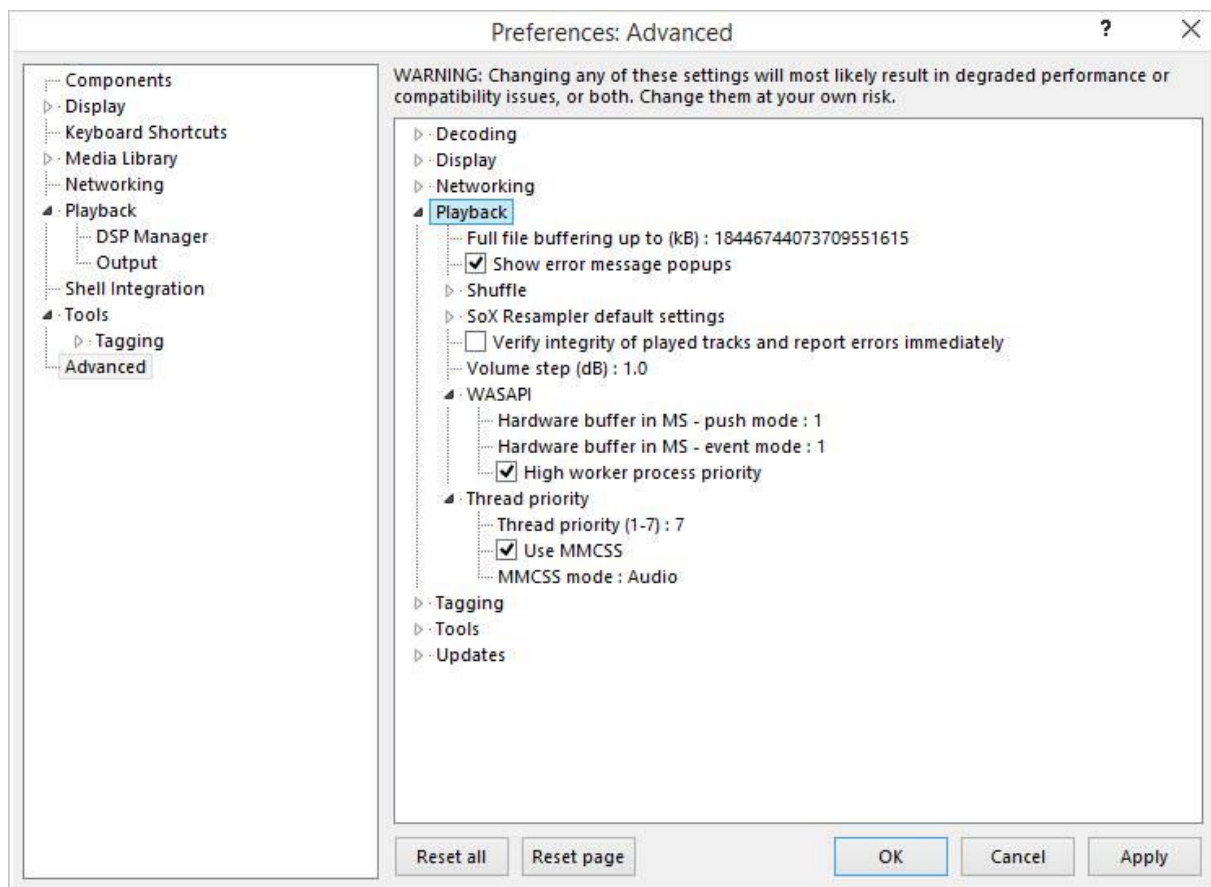
WASAPI Hardware buffer in MS – push/event mode: 1/3/6/12/24/32 until stuttering is gone.

High worker process priority: checked

Thread priority: 7

Use MMCSS: checked

MMCSS mode: Audio (Windows default mode where Fidelizer optimizes)



With this, you should get better sound from foobar2000 and make Fidelizer optimizations becoming much more effective than before. Some people who fail to notice the improvements with Fidelizer before may have better chance after configuring audio software like this.

For Tidal/YouTube users who rely on default Windows audio playback, you can setup bit-perfect sound software [VB-Audio ASIO Bridge](#) with [JPLAY/ASIO4ALL](#) combo for better audio performance. It also works well on iTunes and Windows Media Player too.

For Windows Server 2012 R2 with [AudiophileOptimizer](#), please enable the following options (Recommended version 1.31 or higher)

- Keep Windows Management Instrumentation service
- Install Kernel-Streaming and MediaPlayer Support
- Enable MMCSS in core mode (Multimedia Class Scheduler)
- Set Fidelizer Pro as default shell replacement (If you don't see Fidelizer Pro running on startup)

STEP 2: Choosing the right optimization level

This is simple yet tricky step. I received a lot of reports about Extremist cases related to turning off network functionality and some even go as far as claiming Fidelizer being malware because it disable security services. So here I'll explain each optimization level again in simplified manner.

Workstation: This is default safe level. Fidelizer will enhance sound quality without affecting system performance. Your system won't slow down and everything is working fine as usual. I also use "Workstation" on my work machine generating Fidelizer for customers.

Audiophile: This is dedicated audio level. Fidelizer will sacrifice system/network performance for better sound quality. Your system will be slower and some applications may not work right. If you run foobar2000 manually after optimizations, you'll get poorly optimized software running. You need to select foobar2000 as Music Player Application for optimal audio playback.

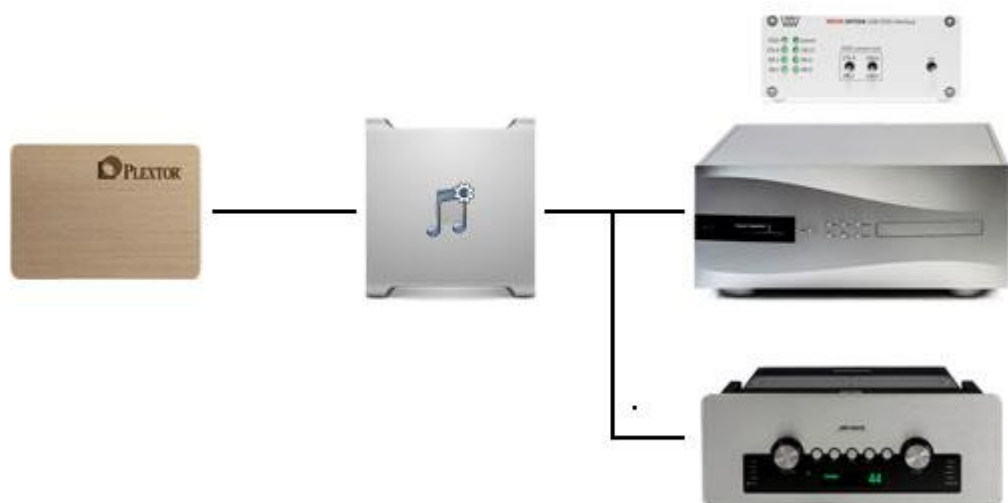
Extremist: This is a dedicated unsafe level. Fidelizer will also stop/disable system services that aren't related to audio playback. Some features may break on certain applications and network functions may stop completely depending on configuration. Only choose this mode if you know what you're doing. Changes are reversible but can cause panic in some people without preparation.

For Fidelizer Pro, you can restore disabled services by running Fidelizer Pro again and change optimization level to Workstation/Audiophile and hit Fidelize. They'll be restored after system restart.

STEP 3: Choosing the right configuration for right application

In Fidelizer Pro, you can change machine configuration for different suitable audio applications. Since they're already explained in how Fidelizer works, this section will cover on end-user's scenarios as below.

Fidelizer Using Machine Configuration: "Music Server"



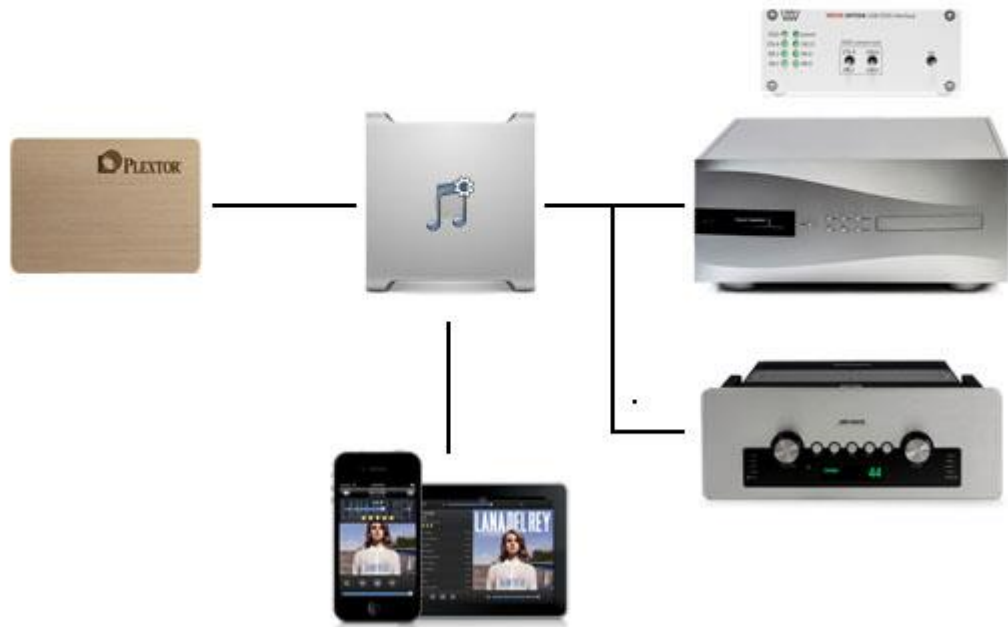
Scenario 1 – I use foobar2000 connecting to USB DAC and want best possible sound quality.

Optimization Level: Extremist

Machine Configuration: Music Server (Audio player, JPLAY Single PC)

Music Player Application: foobar2000

Fidelizer Using Machine Configuration: "Music Server with Network support"



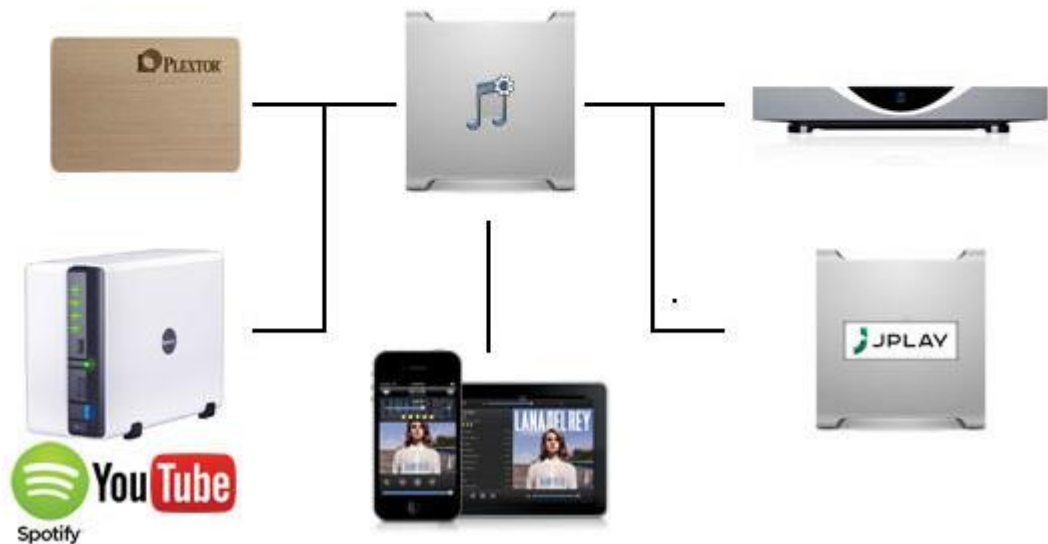
Scenario 2 – I use foobar2000 connecting to USB DAC and want the best possible sound quality *while keeping network remote working*.

Optimization Level: Extremist

Machine Configuration: Music Server with Network support (For remote controller)

Music Player Application: foobar2000

Fidelizer Using Machine Configuration: "Network Transport"



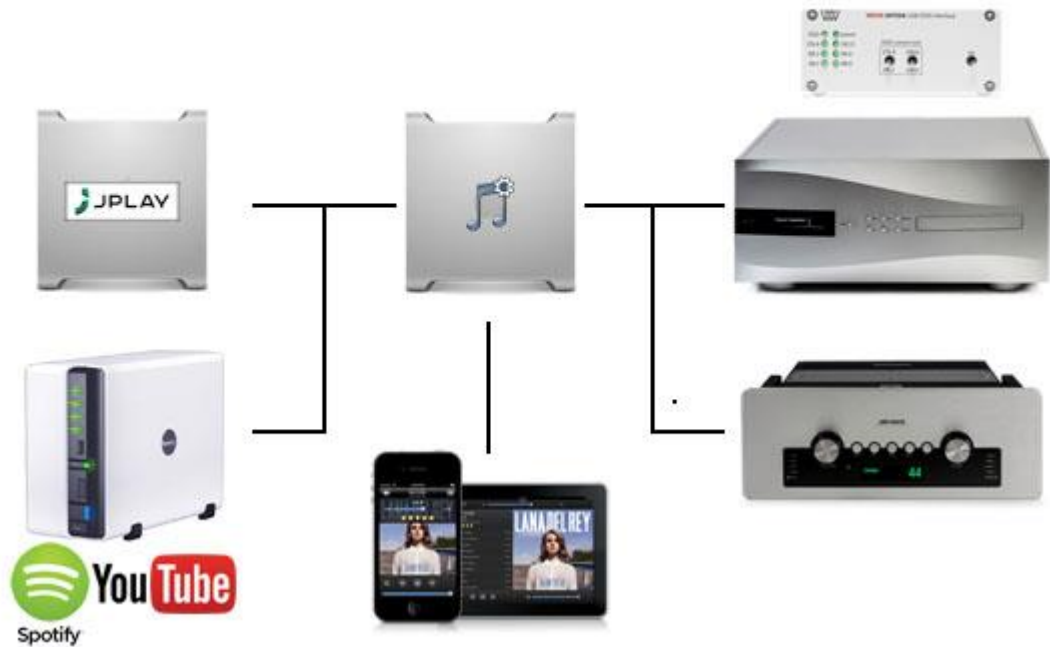
Scenario 3 – I use MinimServer on JPLAY Control PC streaming music to JPLAY Audio PC and want to experience the best possible sound quality.

Optimization Level: Extremist

Machine Configuration: Network Transport (DLNA/UPnP server, JPLAY Control PC)

Music Player Application: MinimServer

Fidelizer Using Machine Configuration: "Network Render"



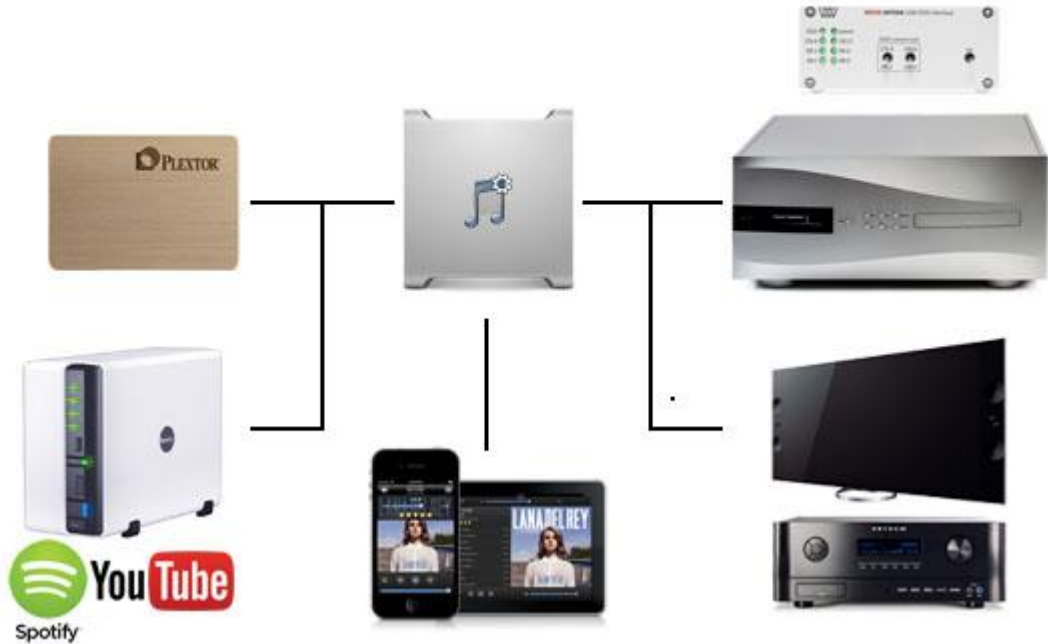
Scenario 4 – I use Roon for listening to music from TIDAL and want to experience the best possible sound quality.

Optimization Level: Extremist

Machine Configuration: Network Render (DLNA/UPnP render, JPLAY Audio PC)

Music Player Application: Roon

Fidelizer Using Machine Configuration: "Media Center"



Scenario 5 – I use XMBC for streaming audio/video playback and want to improve playback quality *without losing Windows Update feature*.

Optimization Level: Audiophile

Machine Configuration: Media Center (HTPC, Audio/Video/Network player)

Music Player Application: XMBC

That should cover everything related to setting up Fidelizer. If you have any question regarding Fidelizer, feel free to ask in www.fidelizer-audio.com website, mail to lucifiar@hotmail.com, or add [Skype ID "lucifiar"](#) to chat about Fidelizer.