

Dockit for SharePoint Installation Guide

Table of Contents

I. PRODUCT DESCRIPTION

II. SYSTEM REQUIREMENTS AND RECOMMENDATIONS

III. INSTALLATION STEPS

I. PRODUCT DESCRIPTION

Dockit for SharePoint is a powerful application for migrating documents, NTFS permissions, data and their associated metadata properties from network file shares, file servers and local hard drives to Microsoft SharePoint Online (Office 365) / SharePoint 2016 / 2013 / 2010 / 2007.

Dockit supports Microsoft SharePoint Server 2016 / 2013 / Microsoft SharePoint Foundation 2013, Microsoft SharePoint Server 2010 / Microsoft SharePoint Foundation 2010 / SharePoint Online in Office 365 and Microsoft Office SharePoint Server 2007 (MOSS 2007) / Microsoft Windows SharePoint Services v3.0 (WSS 3.0) environments.

Dockit application has been designed to work as a standalone application without installing Dockit Web Service component, especially when working with SharePoint Online in Office 365. Dockit Web Service is an optional server-side component. Dockit Web Service component has been developed to give the best results when assigning metadata for the following SharePoint fields:

- Modified Date and Modified By
- Content Approval Status & Comments
- Target Audiences (Microsoft SharePoint 2010)

II. SYSTEM REQUIREMENTS AND RECOMMENDATIONS

Dockit for SharePoint application

- Windows 10 / 8 / 7 (or) Windows Server 2012 R2 / 2012 / 2008 R2 / 2008 with the latest service packs (32 or 64 bit platforms)

Dockit Web Service component (Optional server-side component)

- Windows Server 2012 R2 or Windows Server 2012 or Windows Server 2008 R2 or Windows Server 2008 web front-end server(s) or application server(s) running Microsoft SharePoint Server 2016 or Microsoft SharePoint Server 2013 or Microsoft SharePoint Foundation 2013 or Microsoft SharePoint Server 2010 or Microsoft SharePoint Foundation 2010.

(Or)

- Windows Server 2012 R2, Windows Server 2012, Windows Server 2008 R2, Windows Server 2008 web front-end server(s) or application server(s) running Microsoft Office SharePoint Server 2007 or Windows SharePoint Services v3.0 (32-bit or 64-bit platform).

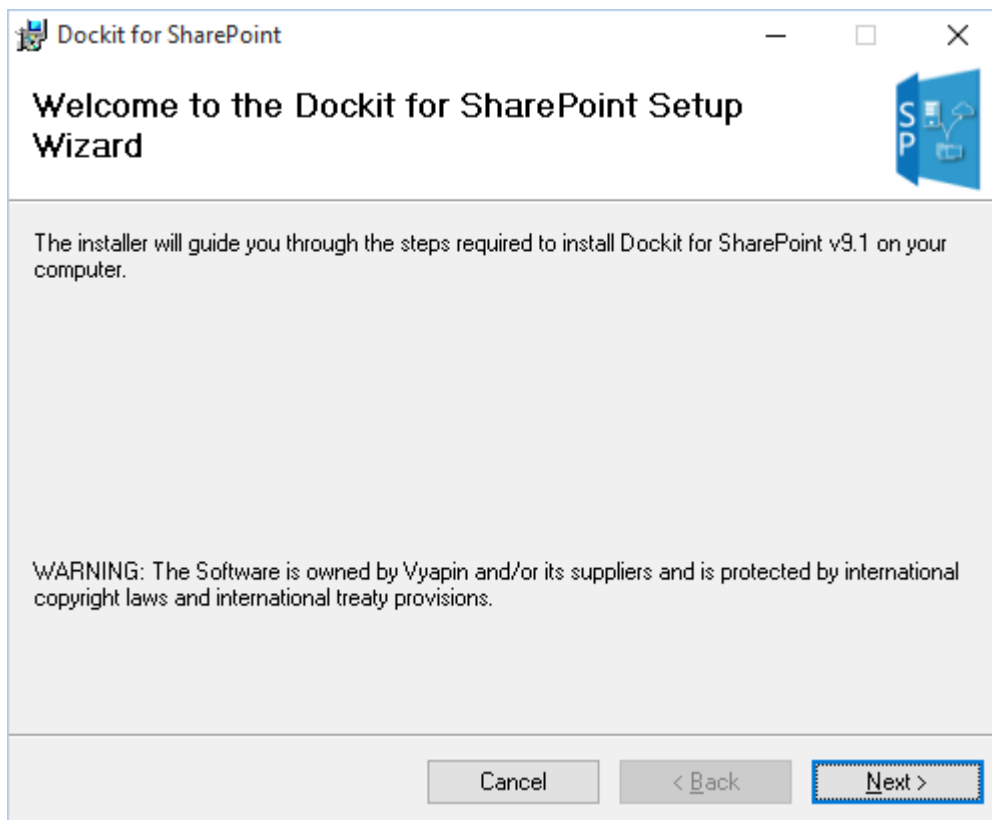
III. INSTALLATION STEPS

Once you download the software, you can install applications packages depending on your file share document migration requirements. The simple setup wizard will guide you through the installation process as shown below:

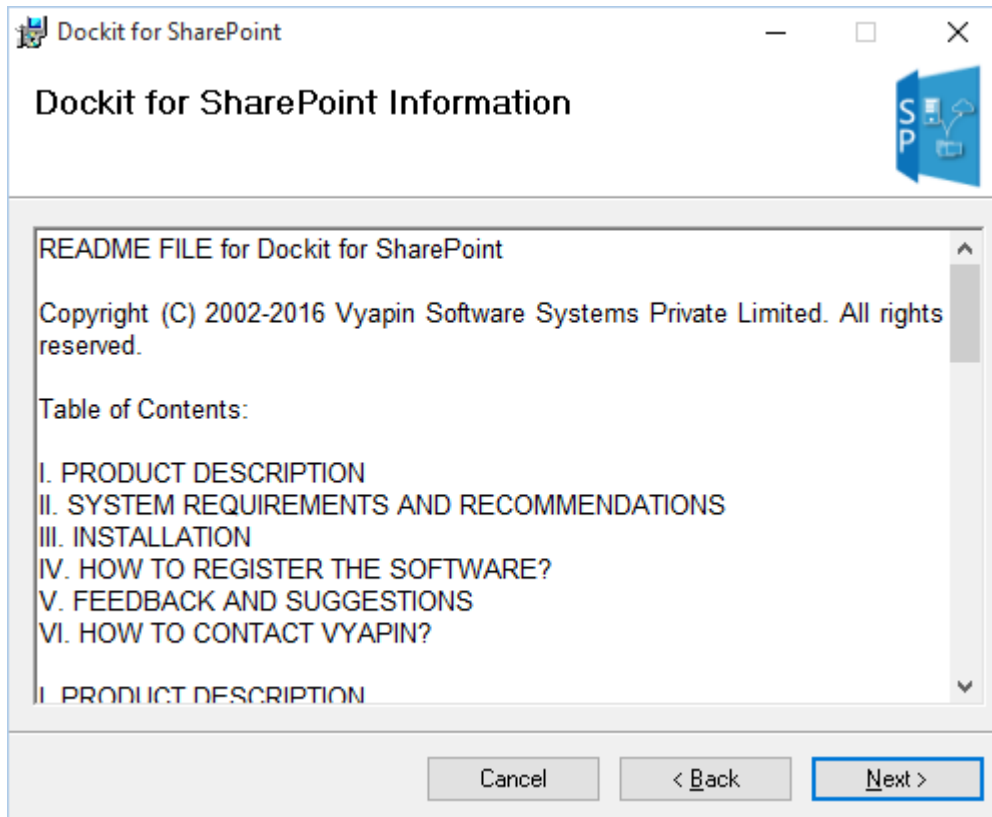
Dockit application

Dockit.msi - Dockit for SharePoint application. You can use this setup file to install Dockit application in the SharePoint Server or any client computer running Windows 10 / 8 / 7 (32-bit or 64-bit platforms).

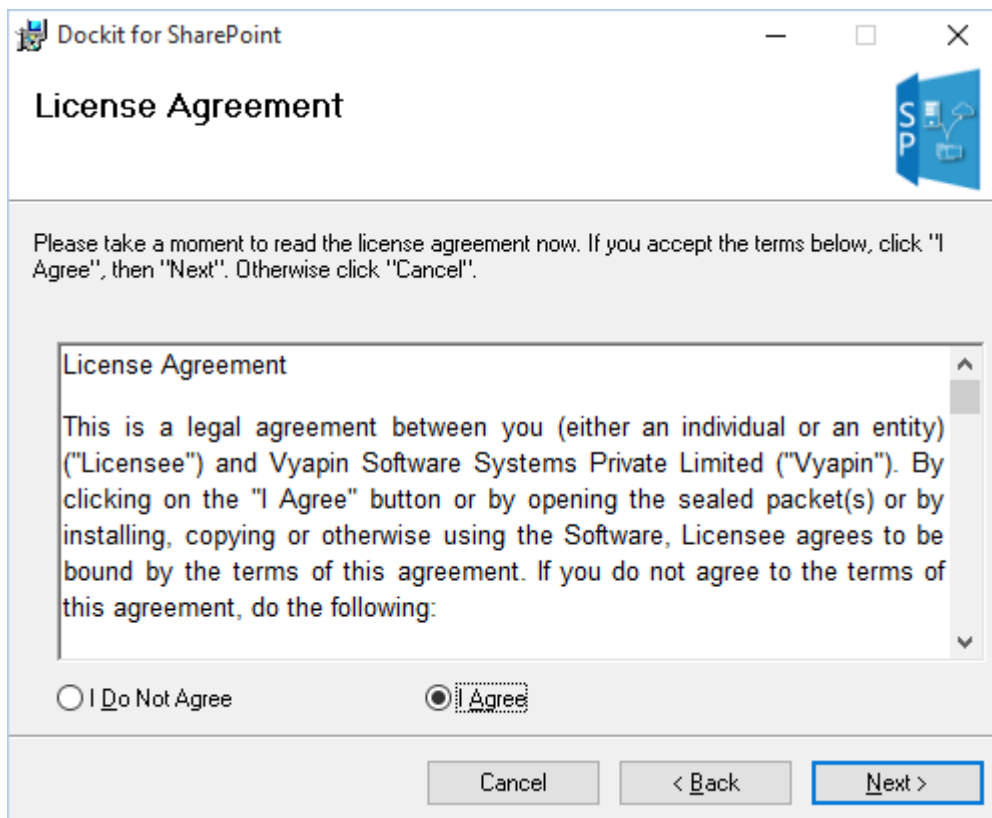
Once you double click the Dockit.msi, the setup wizard **welcome** step will appear as shown below:



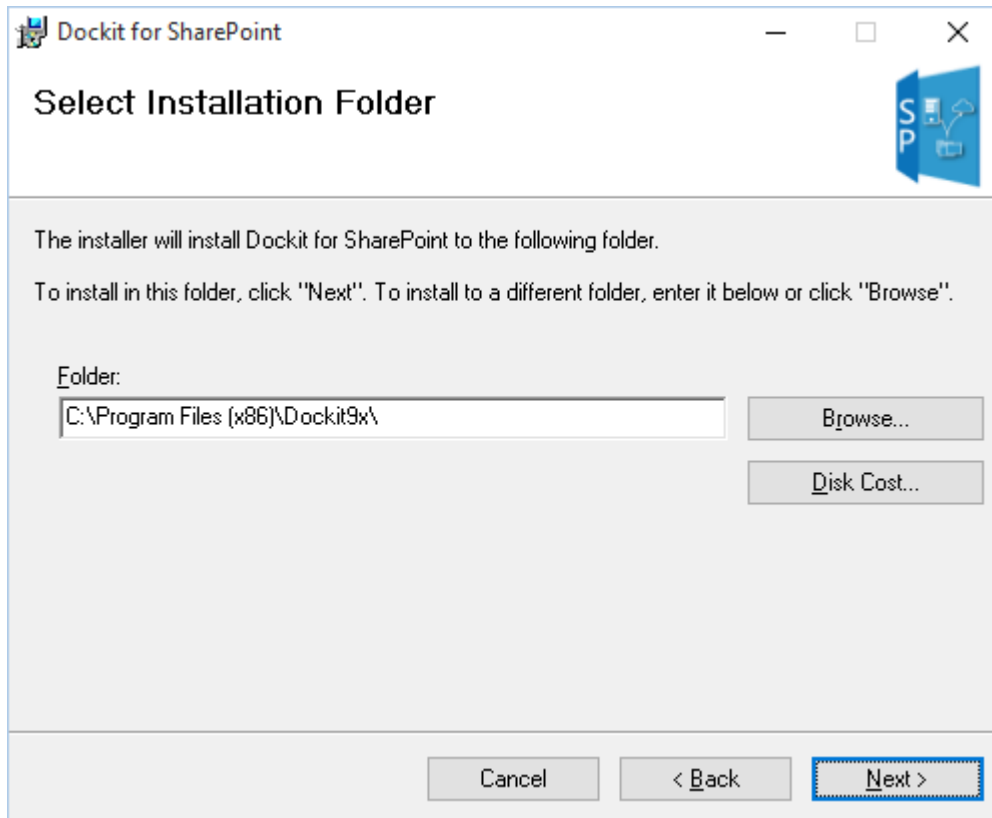
Click **Next** to proceed. **Dockit Read Me** screen will appear as shown below.



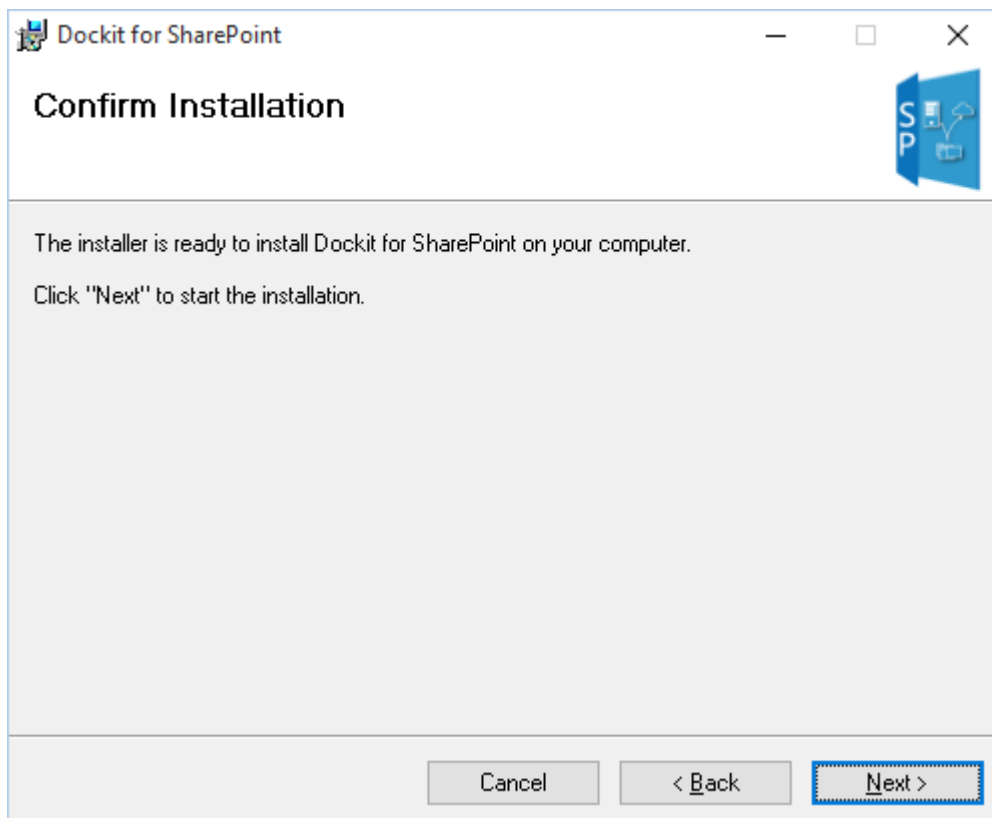
Click **Next** to proceed with the License Agreement. Click **I Agree** to accept the terms in the **License Agreement** screen as shown below.

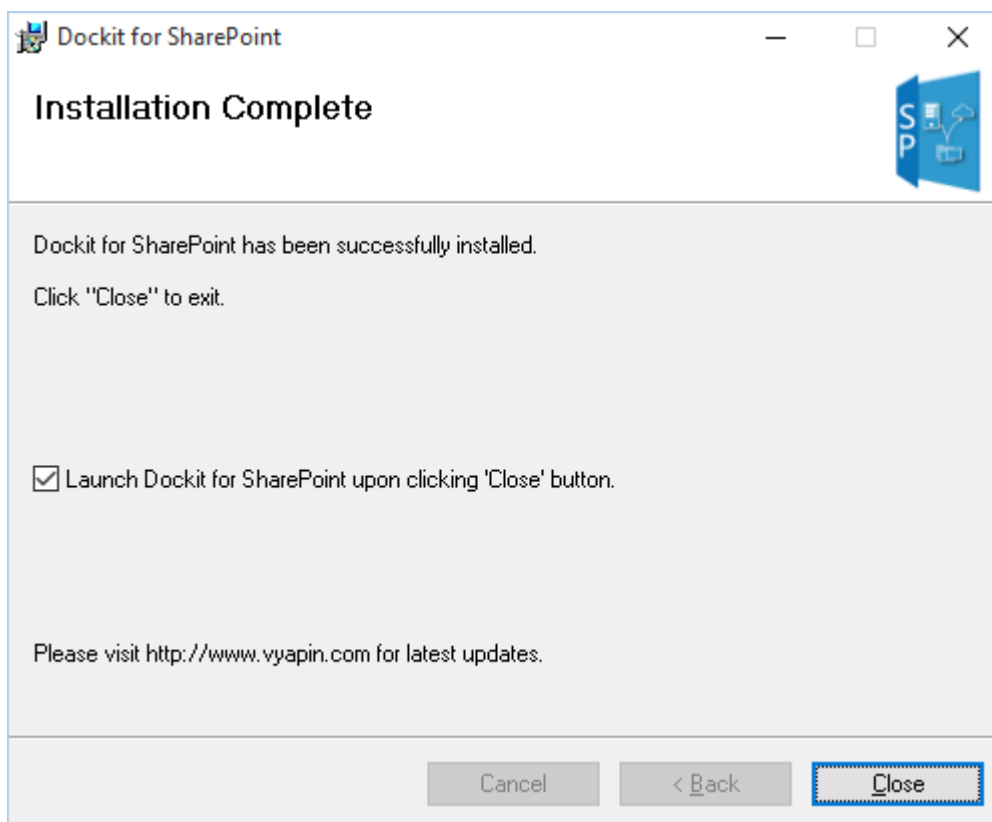
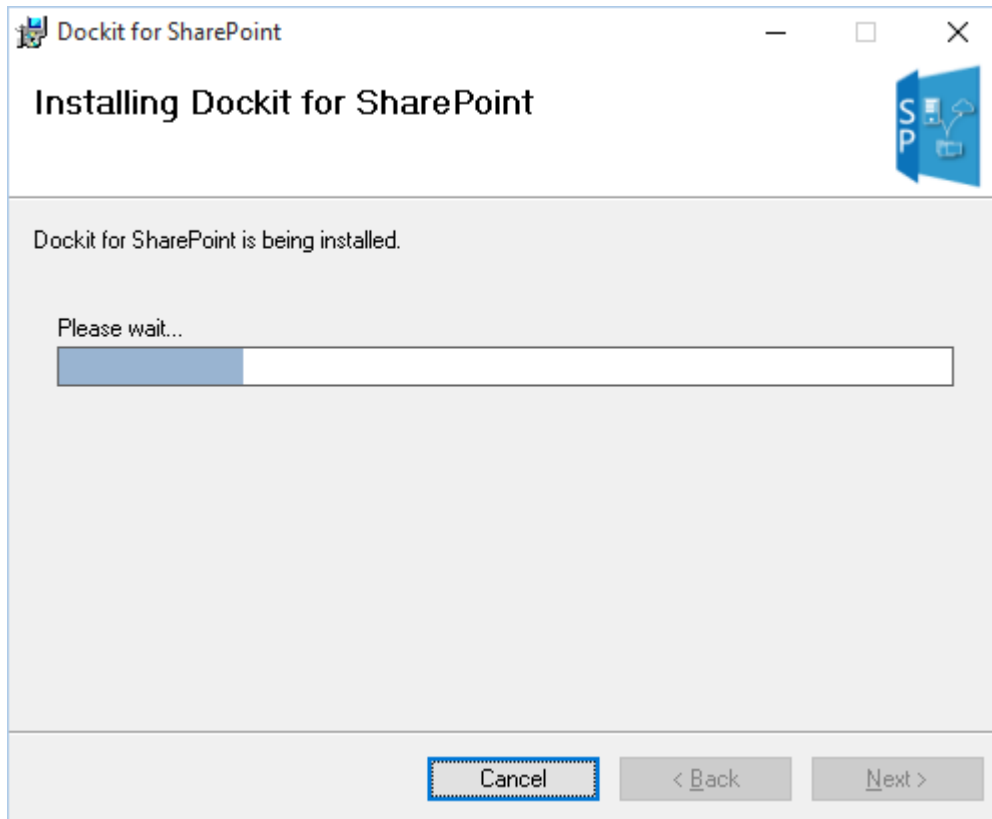


Click **Next** to proceed. Then **Installation Folder** will appear as shown below. **Enter** or **browse** the location to install Dockit for SharePoint application in this installation wizard step.



Click **Next** and proceed with the subsequent steps shown below:





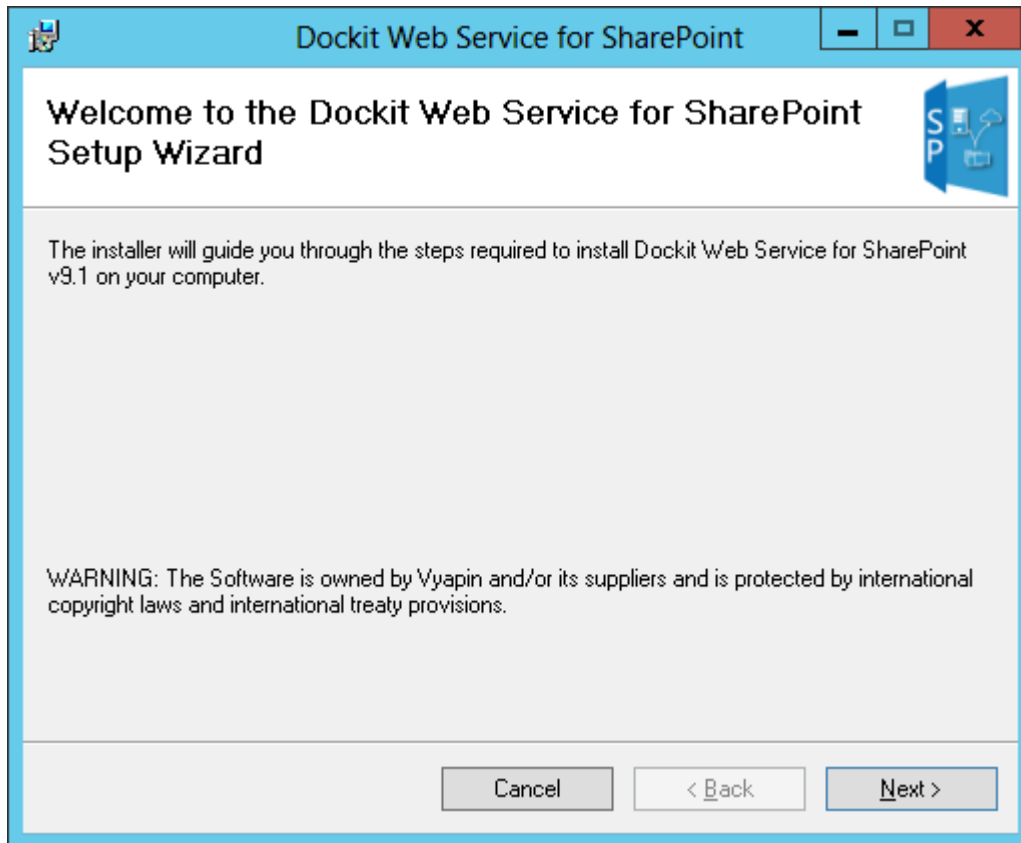
Dockit Web Service component

DockitWebService.msi - Dockit Web Service component for SharePoint Server 2016 / 2013 / 2010 or SharePoint Foundation 2013 / 2010 must be installed on Windows Server 2012 R2 / 2012 / 2008 R2 / 2008. You must install this component in the web front-end server(s) or application server(s) running SharePoint Server 2016 / 2013 / 2010 or SharePoint Foundation 2013 / 2010.

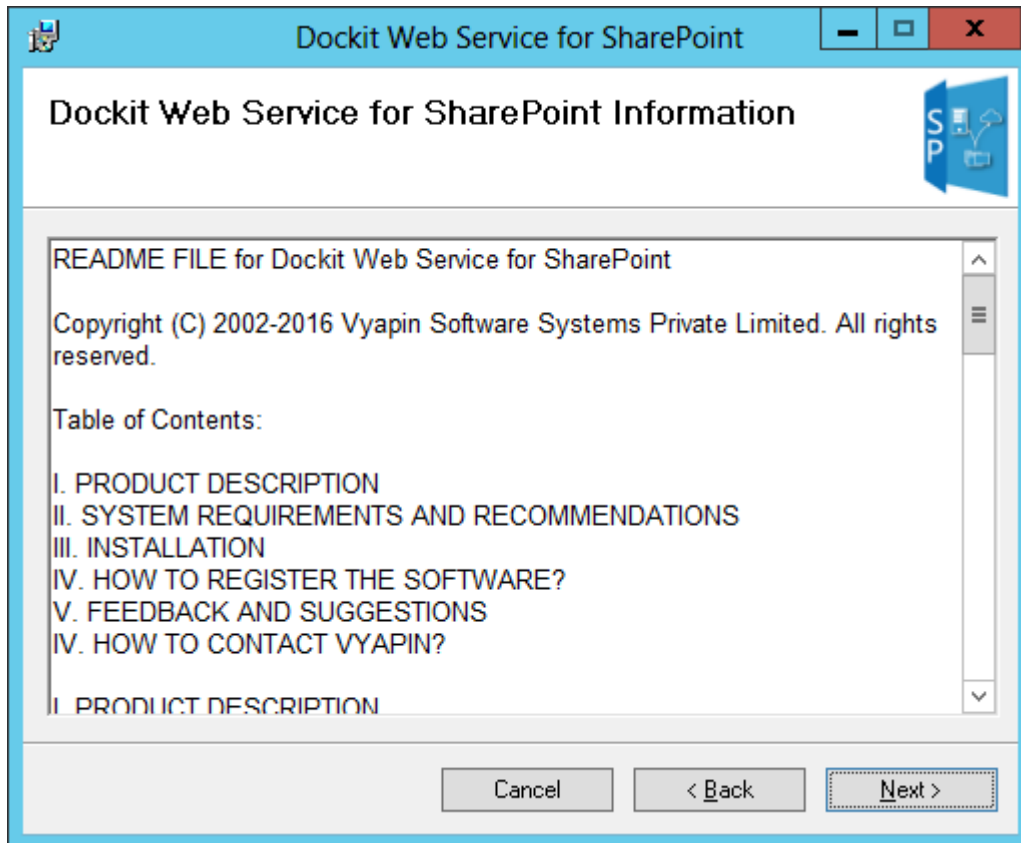
DockitWebService_2007_x86.msi - Dockit Web Service component for MOSS 2007 / WSS 3.0 to be installed on 32-bit Windows Server 2008 / 2003. You must install this component in the web front-end server(s) or application server(s) running 32-bit MOSS 2007 or WSS 3.0.

DockitWebService_2007_x64.msi - Dockit Web Service component for MOSS 2007 / WSS 3.0 to be installed on 64-bit Windows Server 2008 / 2003. You must install this component in the web front-end server(s) or application server(s) running 64-bit MOSS 2007 or WSS 3.0.

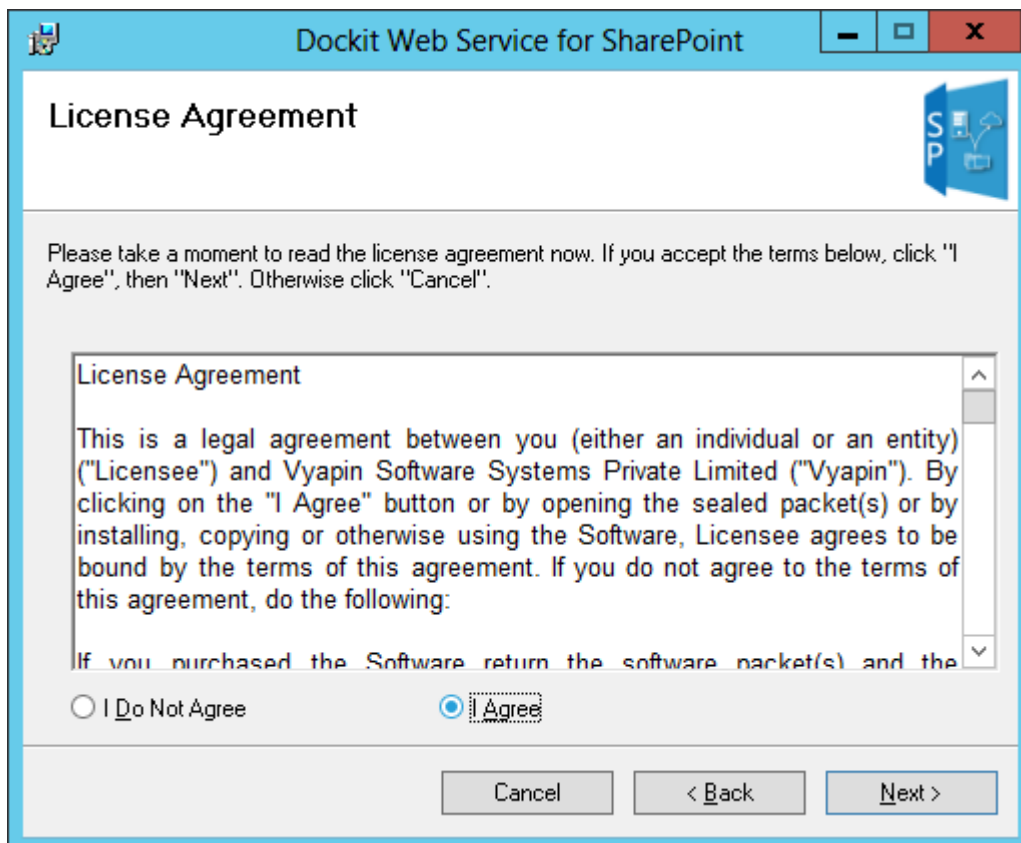
Once you double click the DockitWebService.msi (or any one of the above packages), the setup wizard **Welcome** screen will appear as shown below:



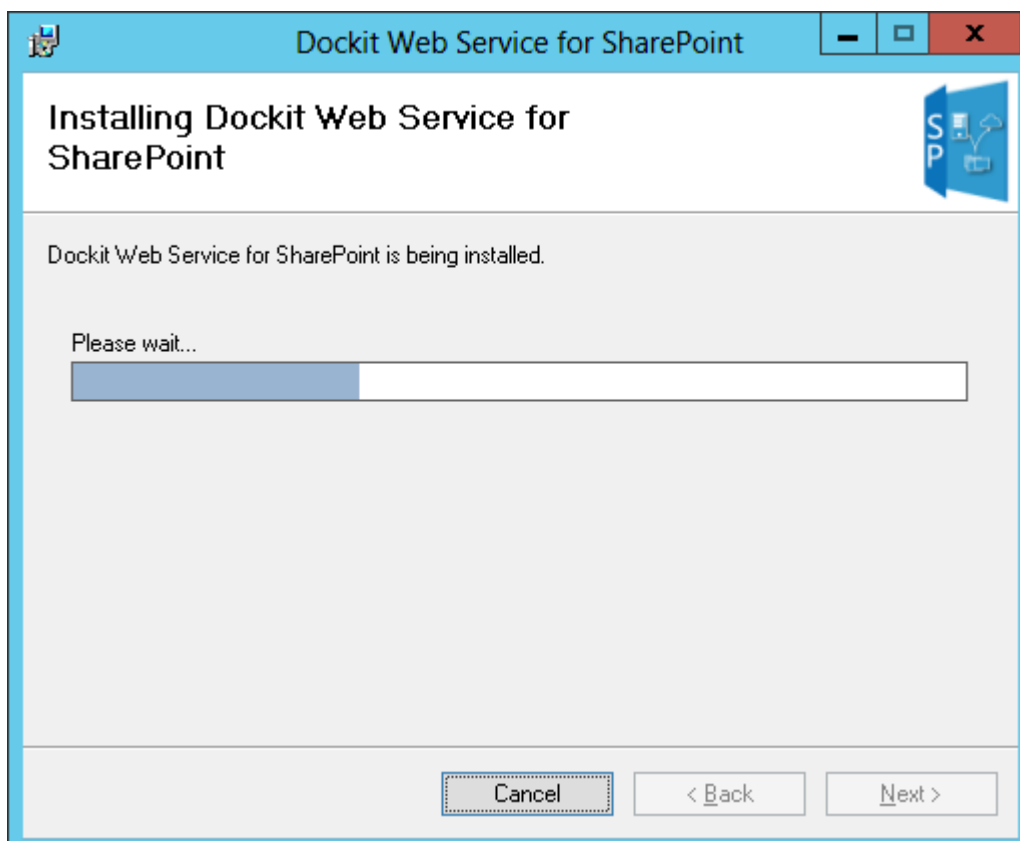
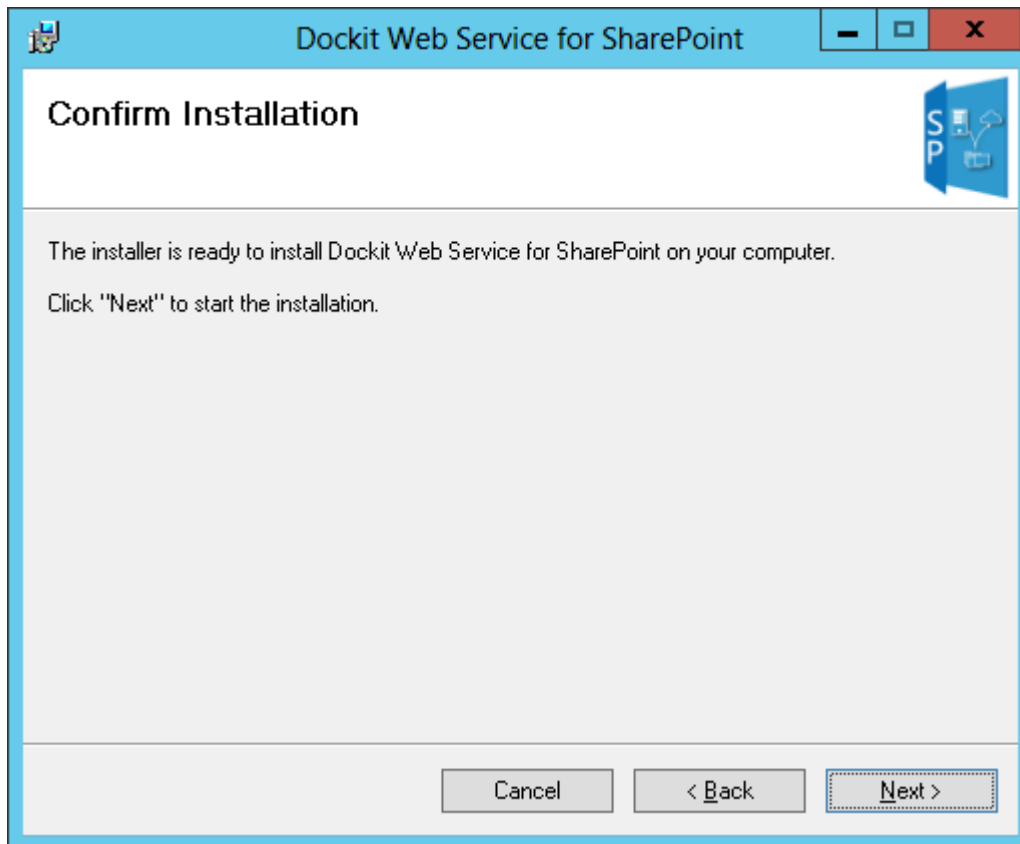
Click **Next** to proceed. **Dockit Web Service for SharePoint** Information screen will appear as shown below:

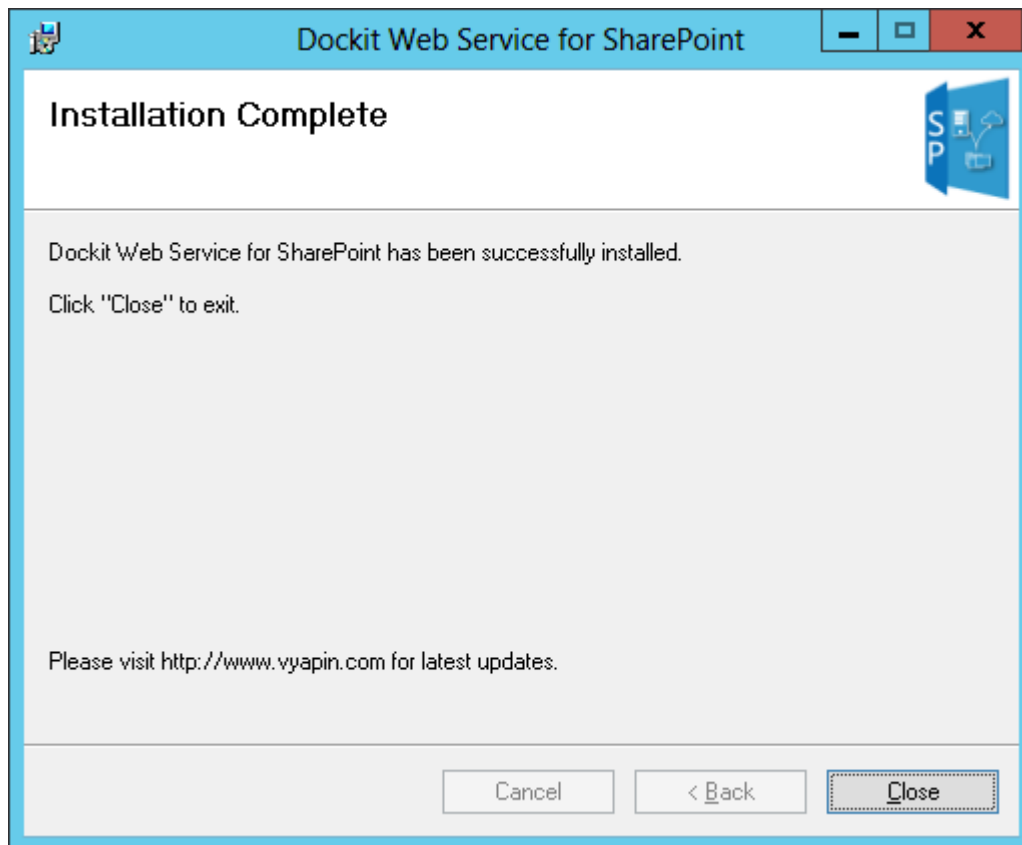


Click **Next** to proceed with the License Agreement. Click **I Agree** to accept the terms in the **License Agreement** screen as shown below.



Click **Next** and proceed with the subsequent steps shown below:





ACKNOWLEDGEMENT

All the brand and product names are trademarks or registered trademarks of their respective owners.

Copyright ©2002-2016 Vyapin Software Systems Private Limited. All rights reserved.