

## Broadcom GNSS Geolocation Sensor for Windows 7 Installation Instructions

The installation package contains several options that are suitable for various configurations listed below.

Broadcom GNSS Geolocation Sensor for Windows 7 Installation Instructions .....	1
1 CP210x .....	2
1.1 Interactive Installation.....	2
1.2 Upgrade .....	13
1.3 Interactive Uninstallation .....	15
1.4 Interactive Maintenance .....	17
1.5 Batch or Silent Installation and Uninstallation.....	20

# 1 CP210x

CP210x configuration is suitable for platforms that are using the Silab CP210x driver and the pre-requisite is to have a working Silab driver properly installed.

The CP210x USB to UART Bridge Virtual COM Port (VCP) drivers are required for device operation as a Virtual COM Port to facilitate host communication with CP210x products

<http://www.silabs.com/products/mcu/Pages/USBtoUARTBridgeVCPDrivers.aspx>

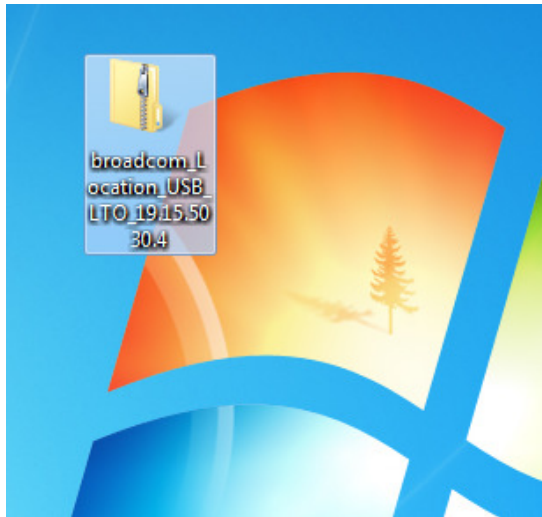
ACPI configuration is suitable for platforms that are using Broadcom Bus Driver

## 1.1 Interactive Installation

1.1.1 Double-click on Broadcom\_Location\*.msi for the appropriate Windows Operating System using the choices below:

### CP210x

- Broadcom\_Location\_x86\_USB\_LTO.msi – For 32-bit Windows 7 Operating System and LTO
- Broadcom\_Location\_x86\_USB.msi – For 32-bit Windows 7 Operating System and NO LTO
- Broadcom\_Location\_x64\_USB\_LTO.msi – For 64-bit Windows 7 Operating System and LTO
- Broadcom\_Location\_x64\_USB.msi – For 64-bit Windows 7 Operating System and NO LTO

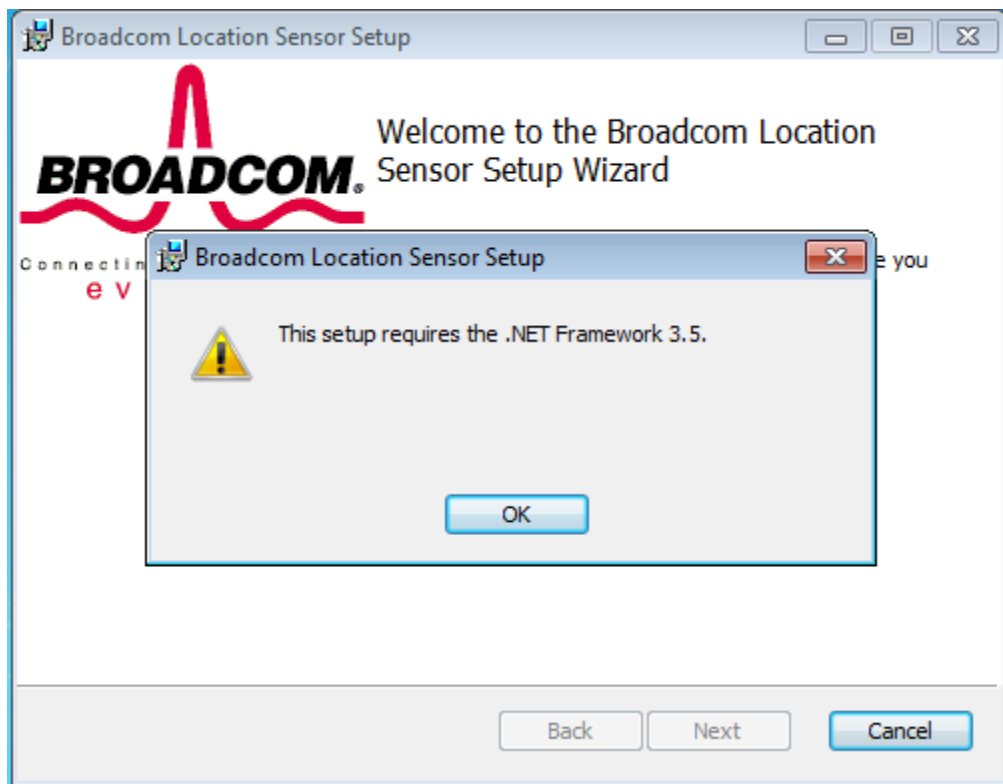


Pre requisite:

For Windows 7 dotNet Framework 3.5 needs to be present - default

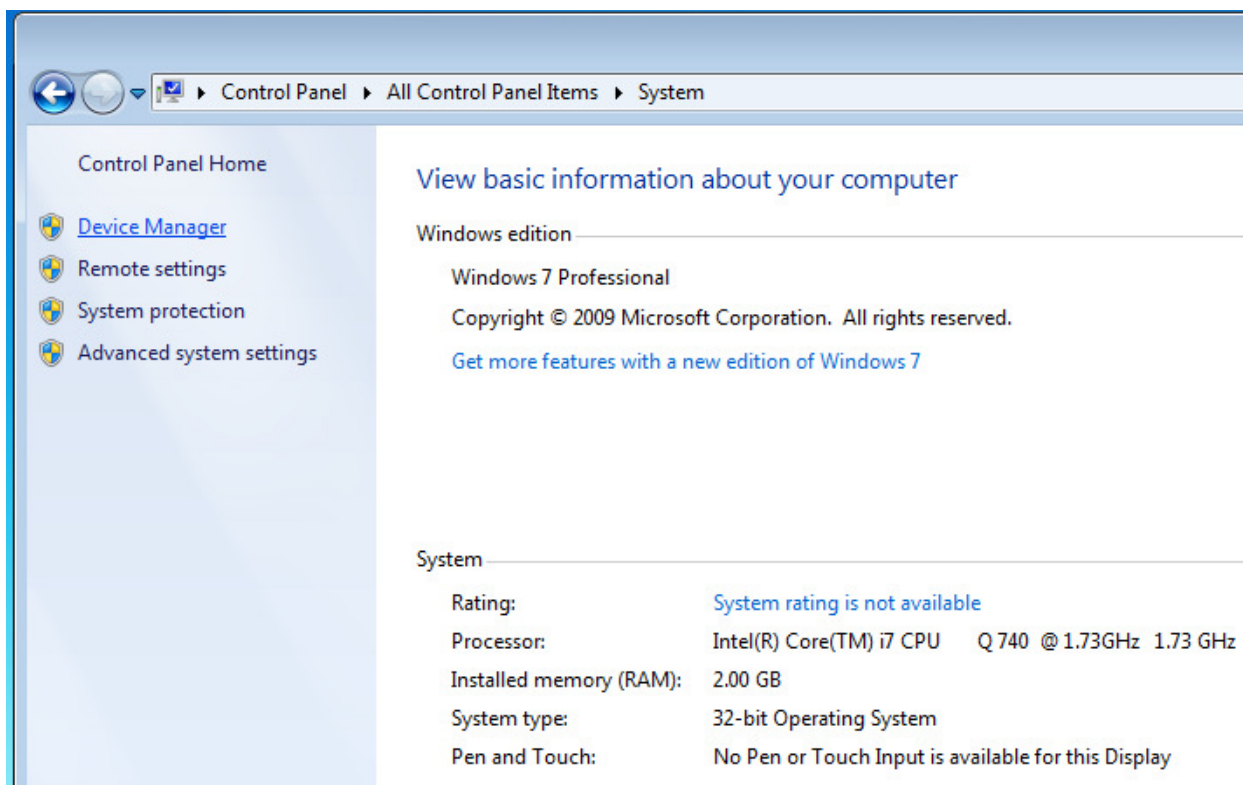
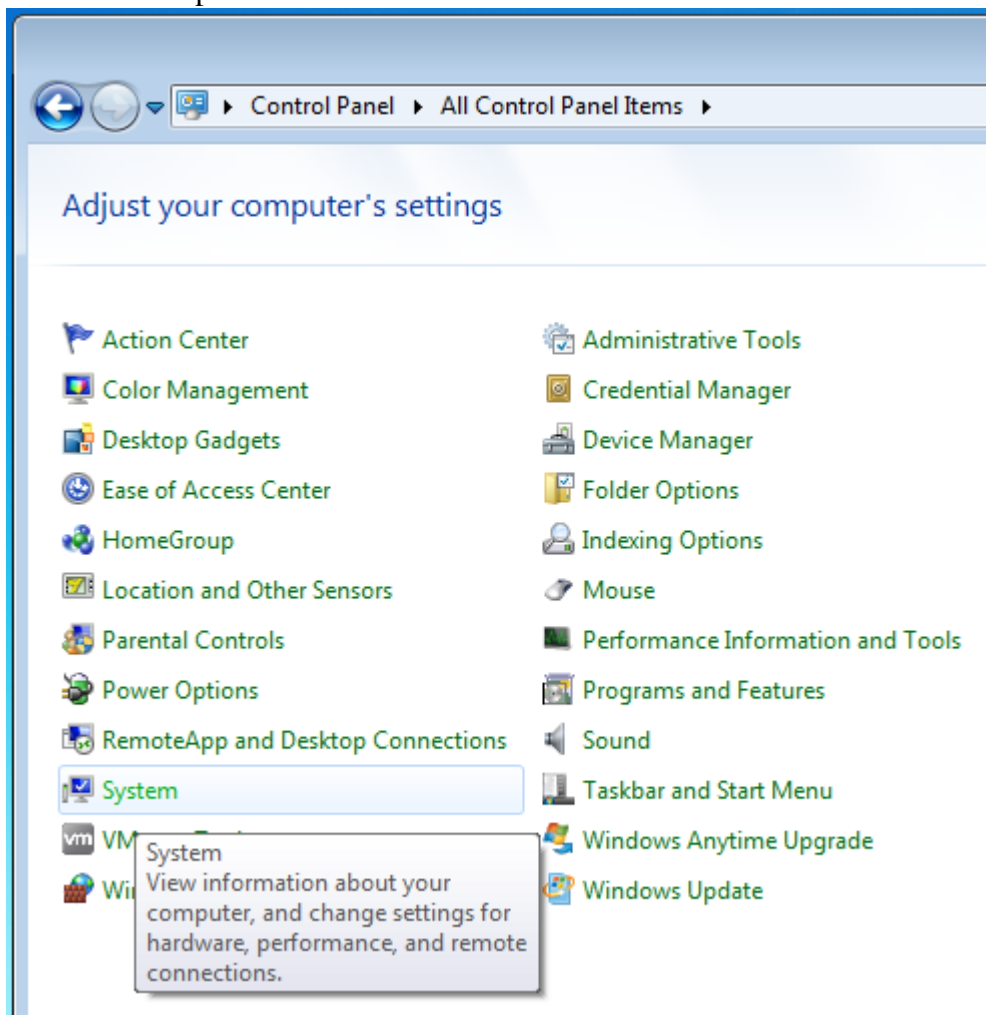
For Windows 7 SP1 dotNet Framework 3.5 needs to be present – default

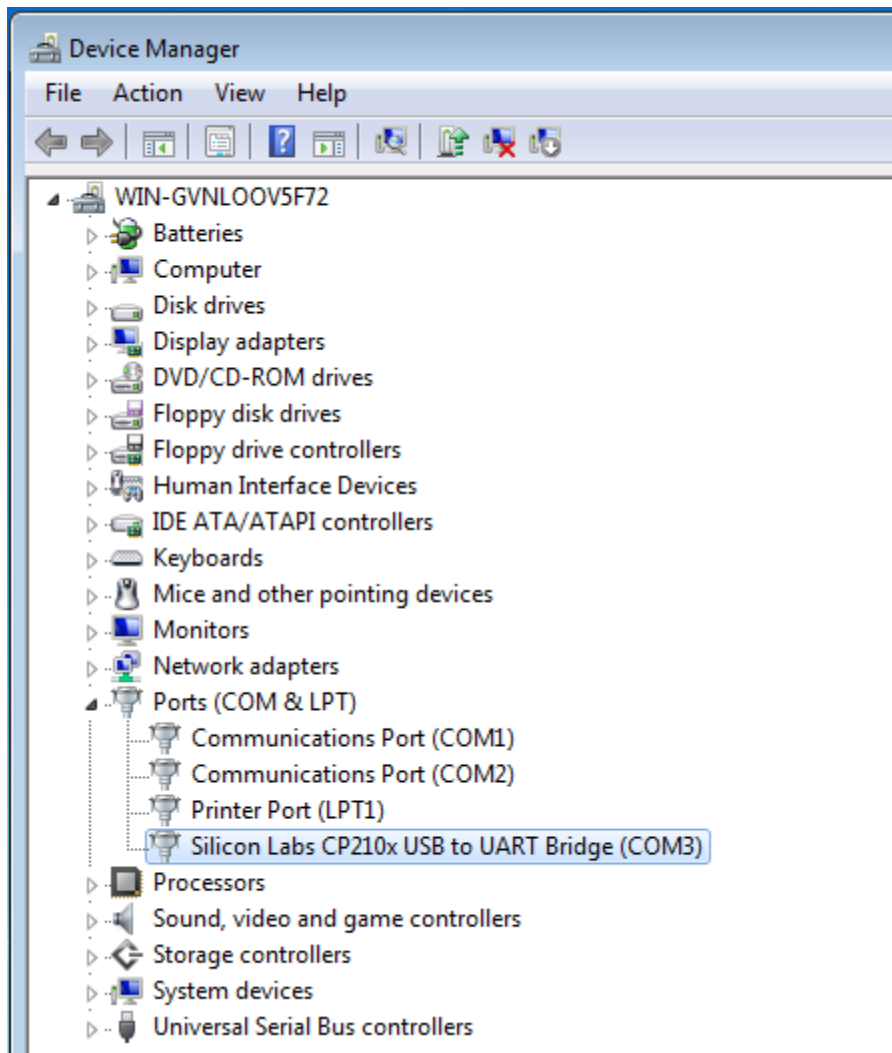
If you see the following then dotNet Framework has been uninstalled manually from the OS



Silabs driver needs to be present on the machine to verify



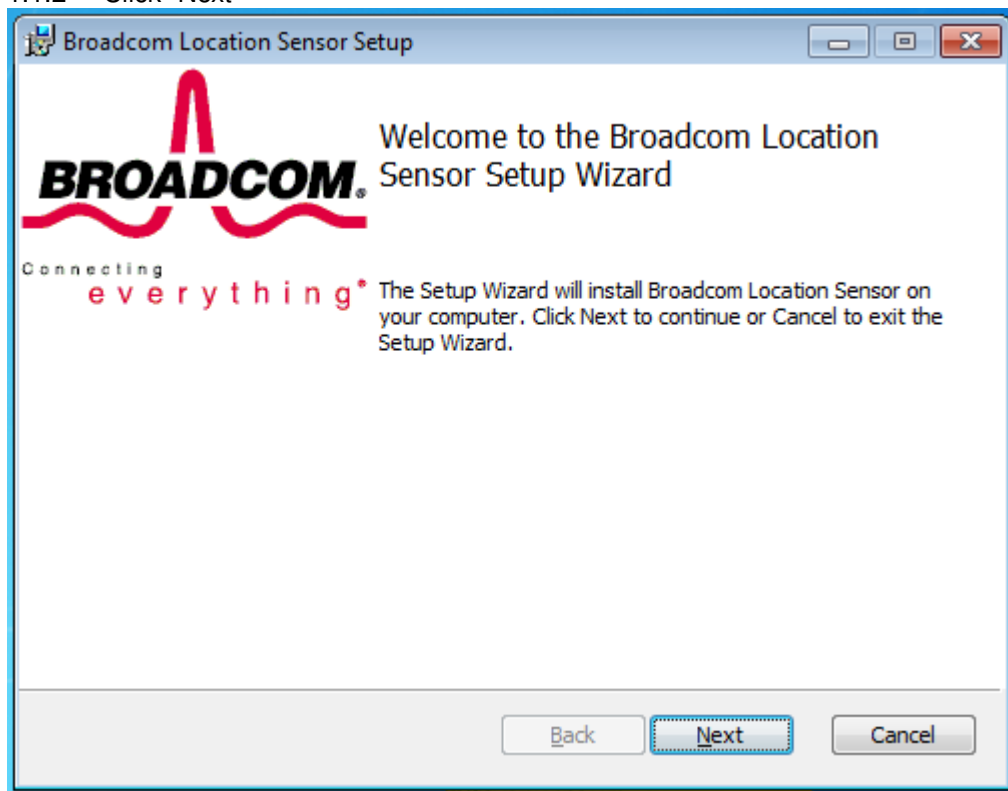




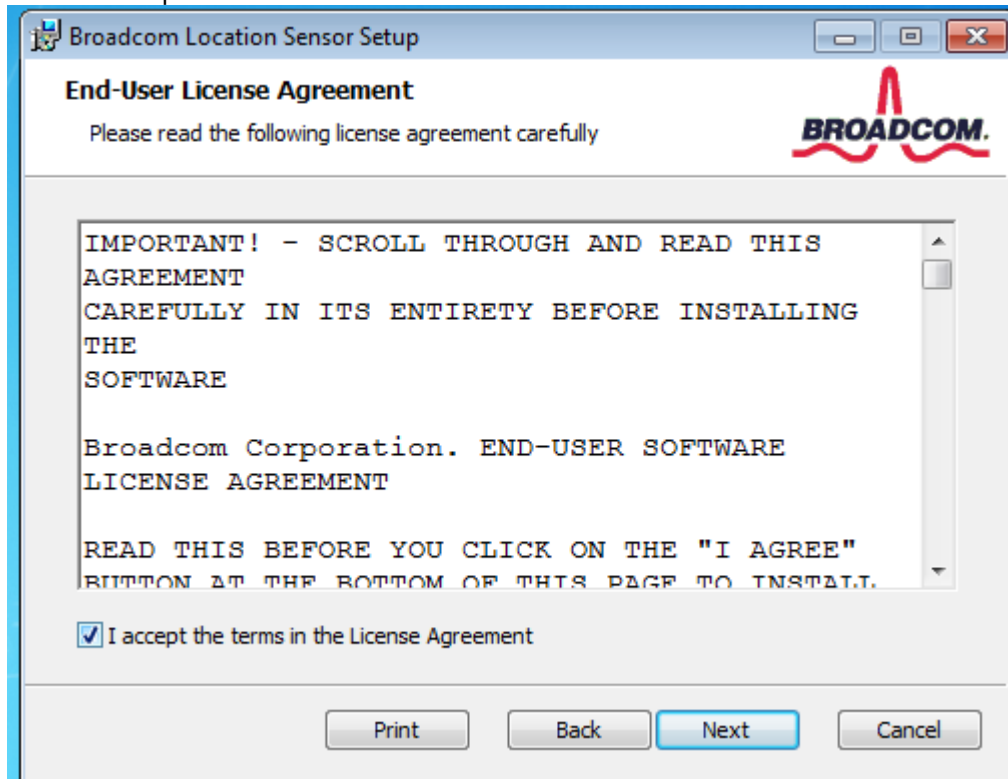
If not you can install a version from

<http://www.silabs.com/products/mcu/Pages/USBtoUARTBridgeVCPDrivers.aspx>

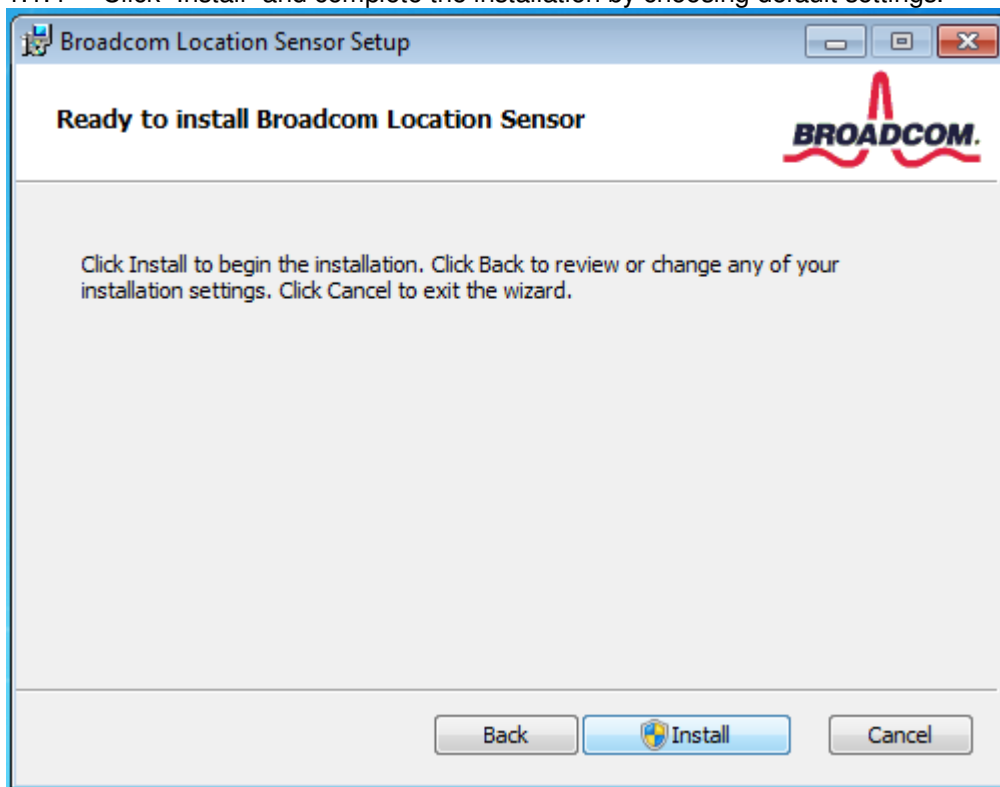
## 1.1.2 Click "Next"



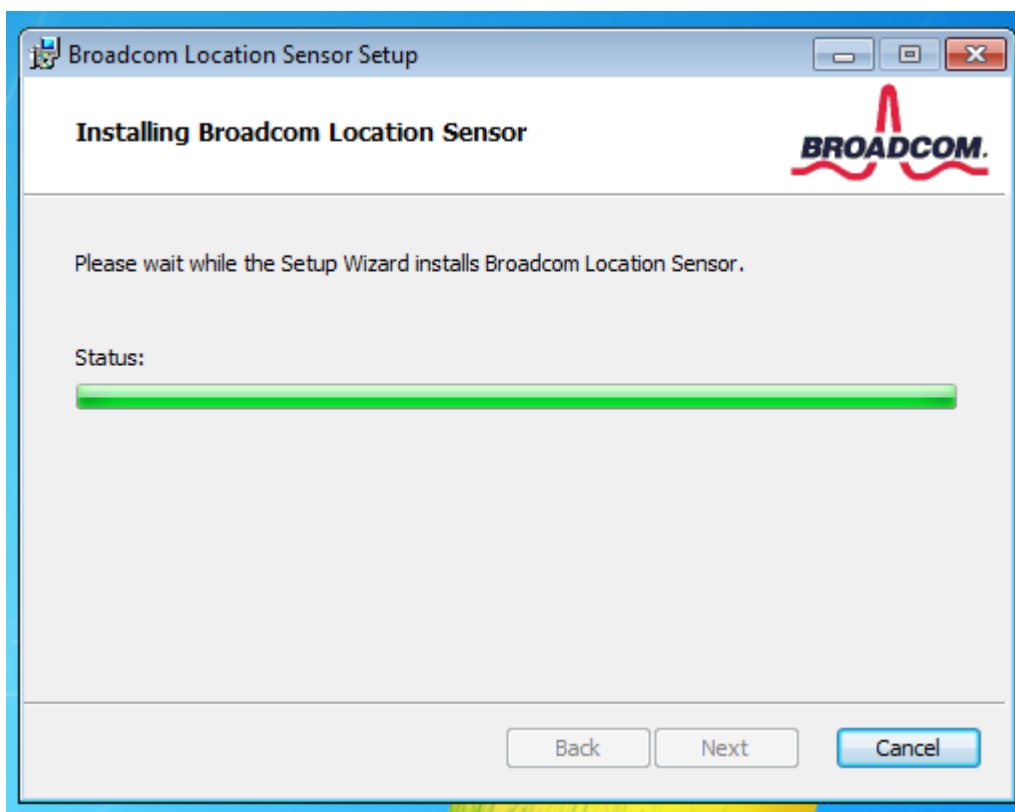
## 1.1.3 Accept EULA and Click "Next"

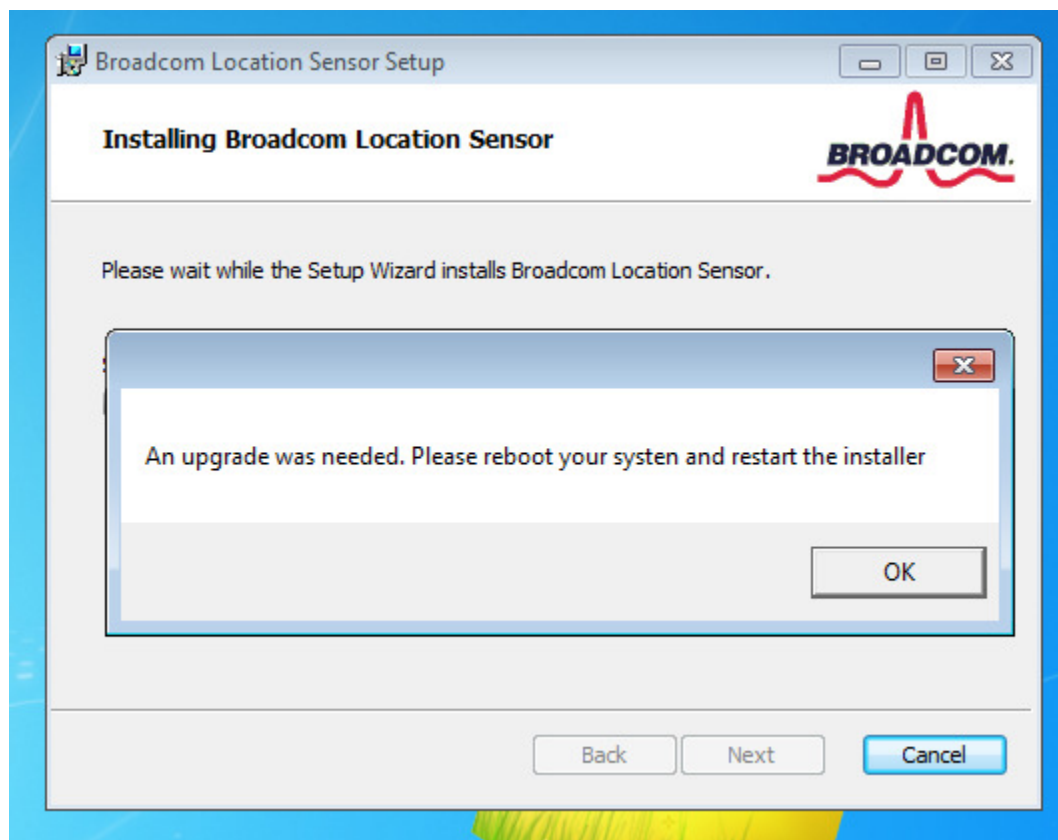


1.1.4 Click "Install" and complete the installation by choosing default settings.



Note: When you execute the installer as a user you will see the Shield requesting elevation for administration right. If you execute the installer as an admin you will not see the shield. It is always preferred to install the driver with full administration rights.

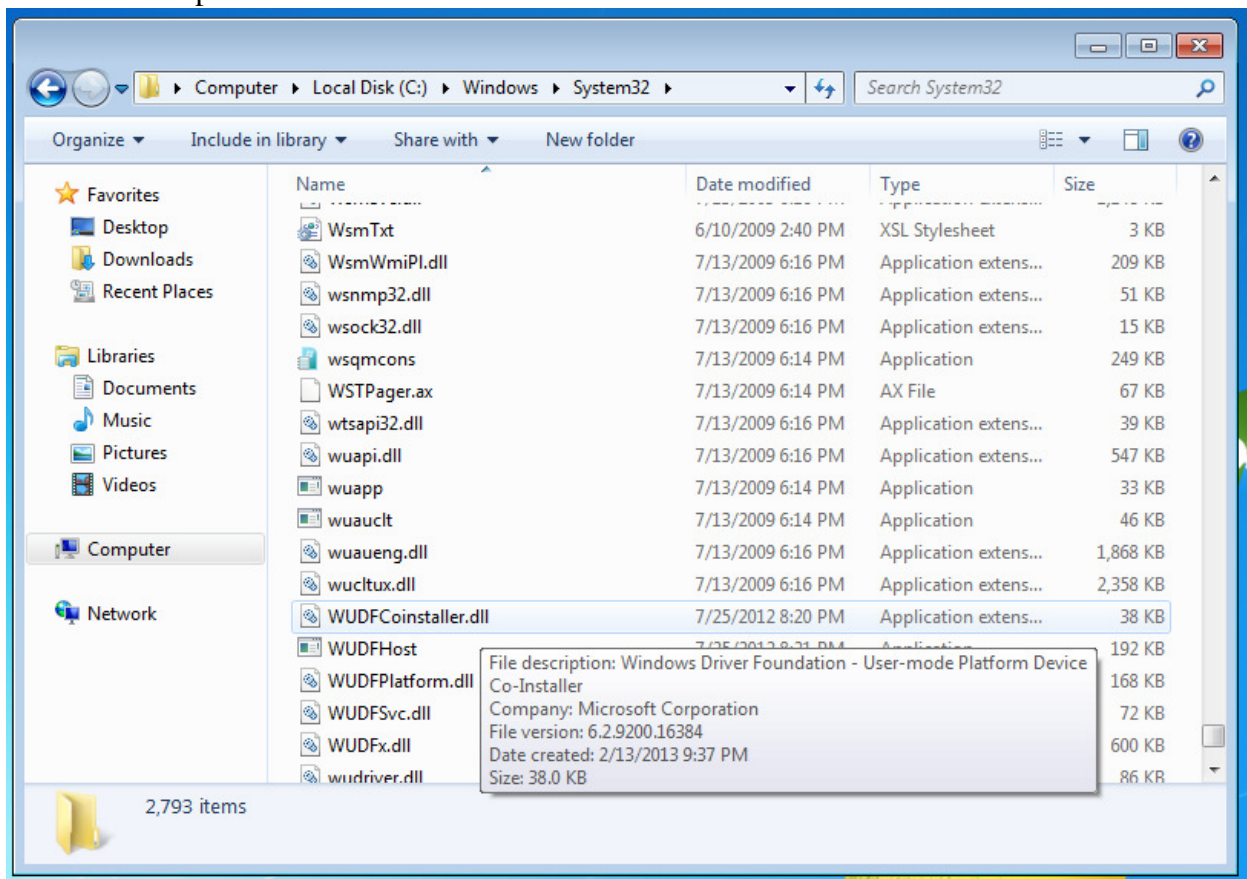




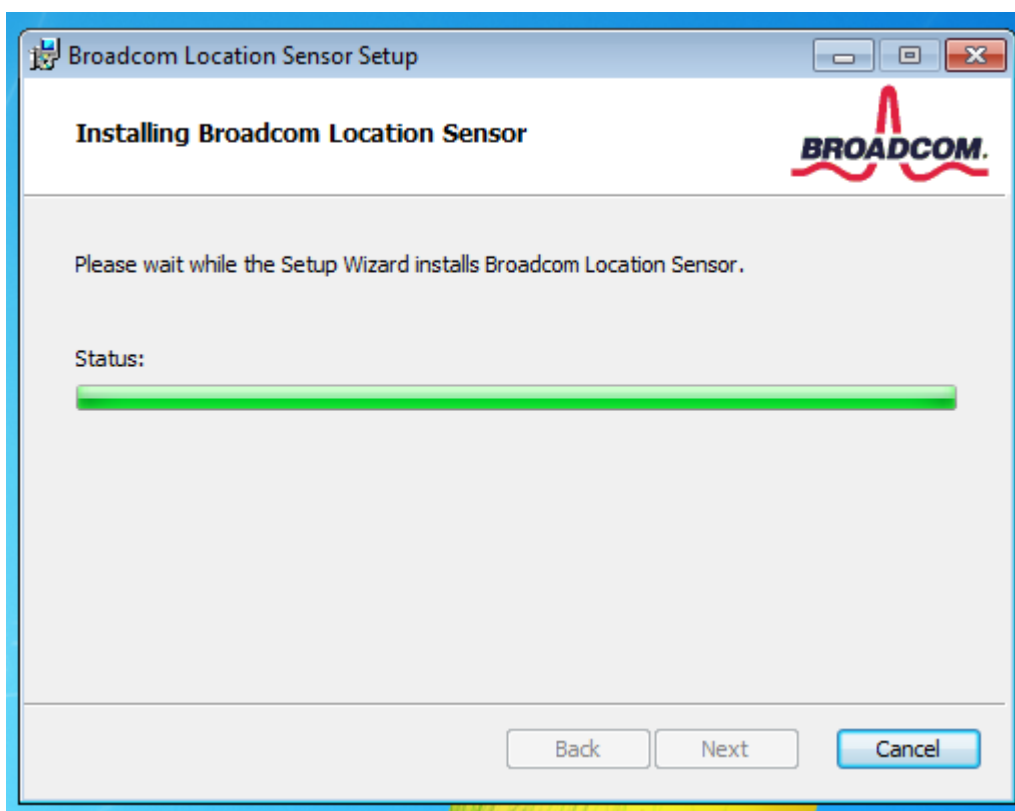
If you see the previous dialog, you need to reboot your system because of an update of wdf redistribution file for Windows 7 umdf-1.11-Win-6.1.msu

Please refer to <http://msdn.microsoft.com/en-us/windows/hardware/br259104.aspx> for more information.

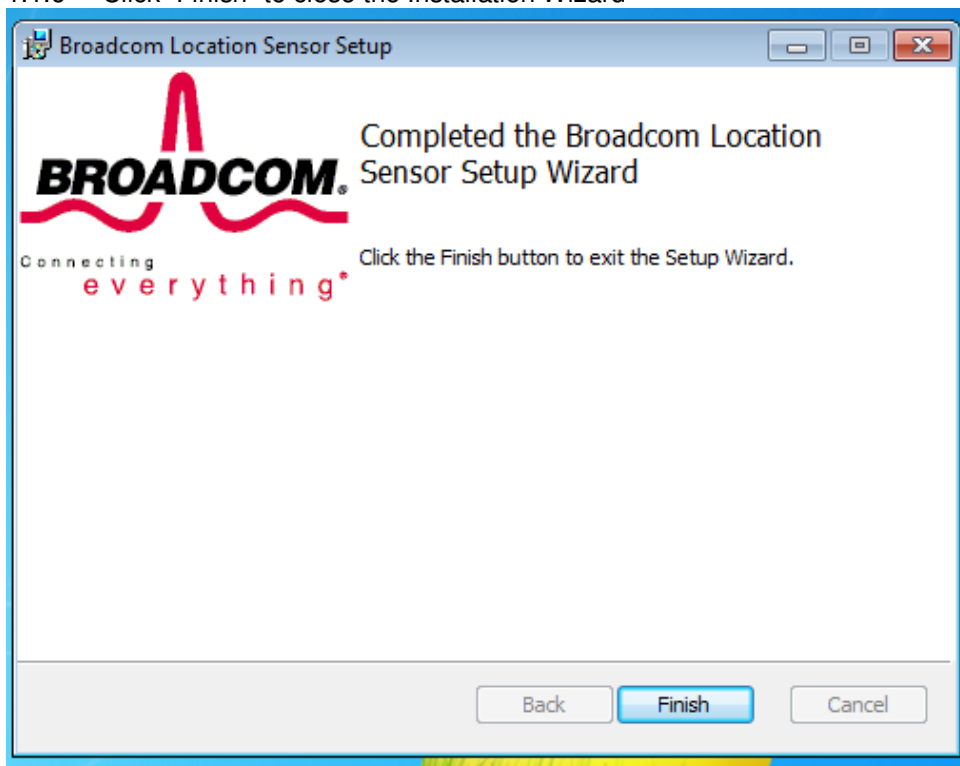




1.1.5 Click "Install" and complete the installation of the Location Sensor

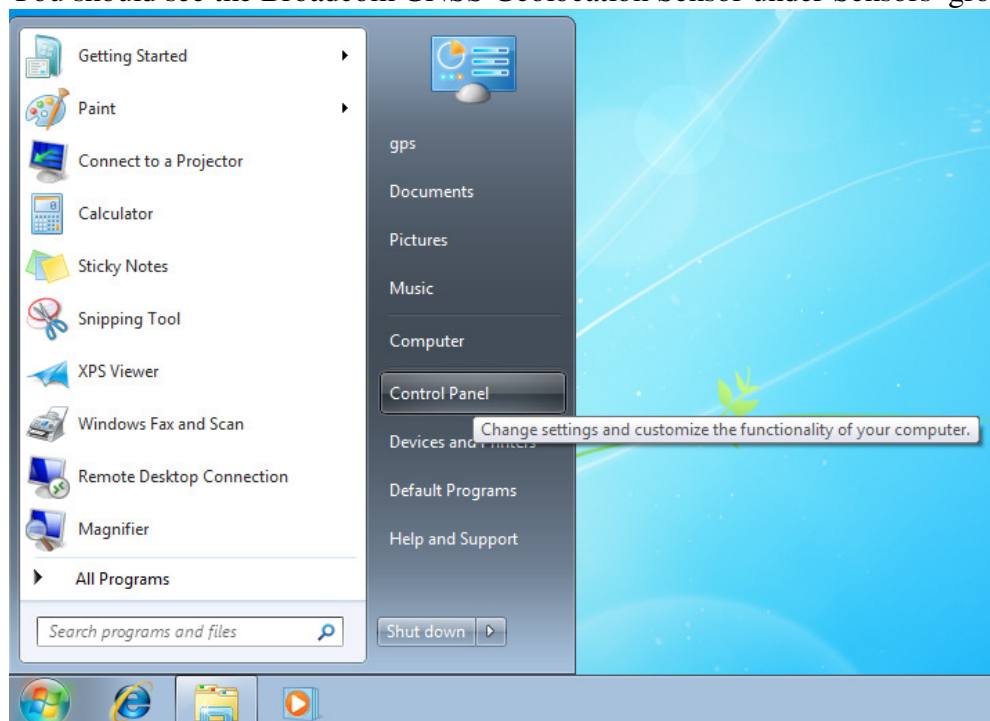


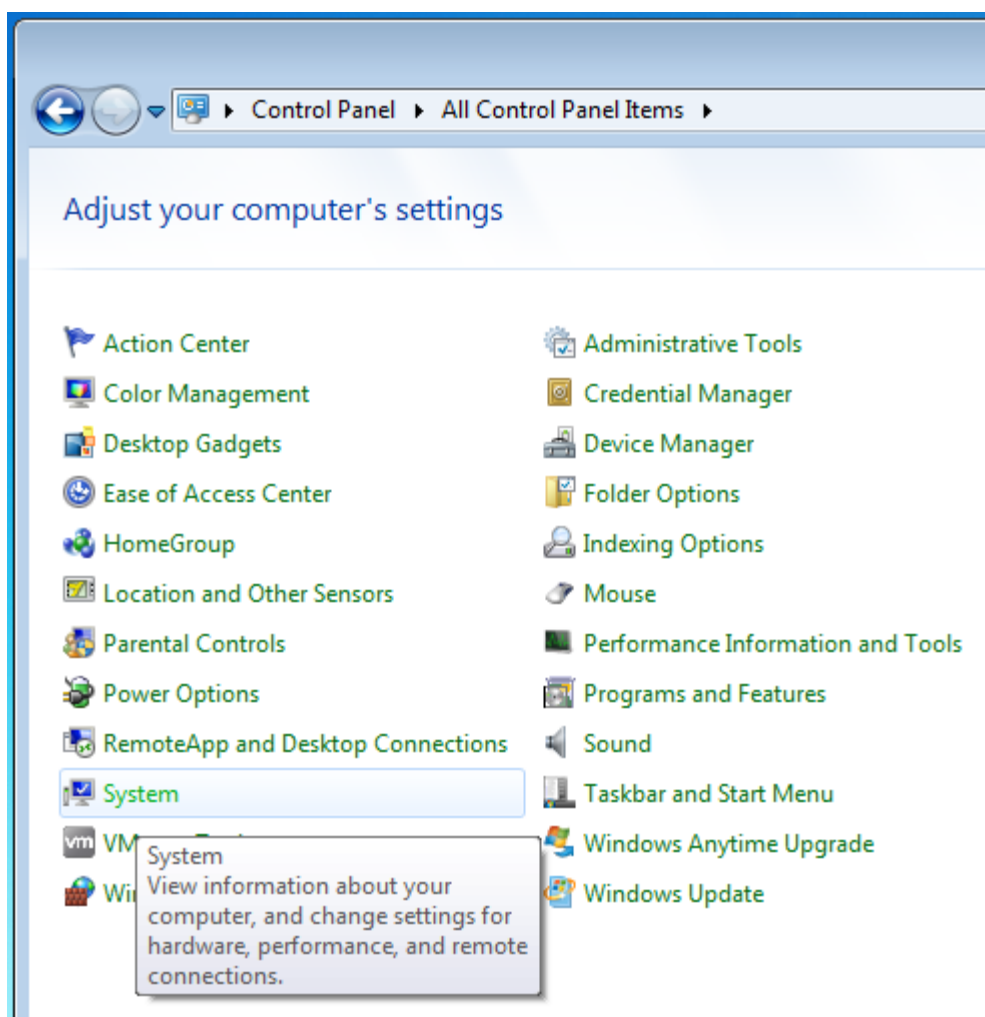
## 1.1.6 Click "Finish" to close the Installation Wizard

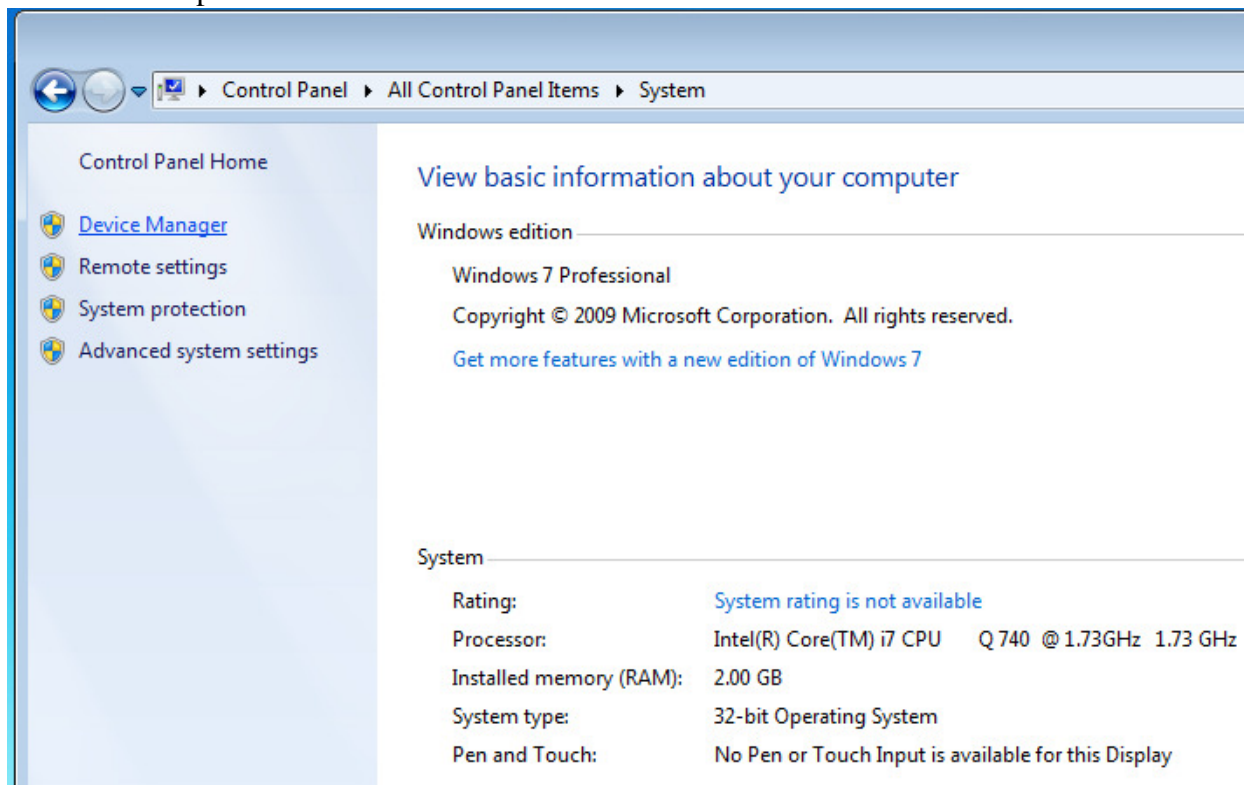


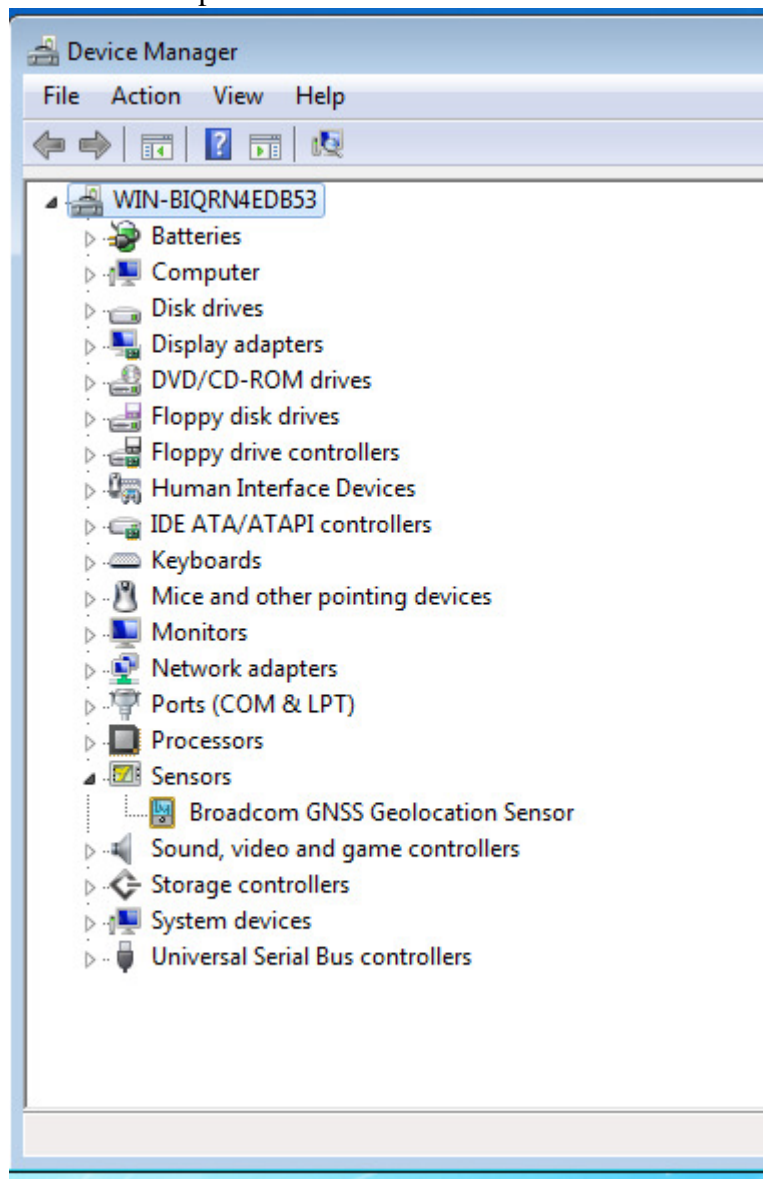
## 1.1.7 Device Manager

You should see the Broadcom GNSS Geolocation Sensor under Sensors group



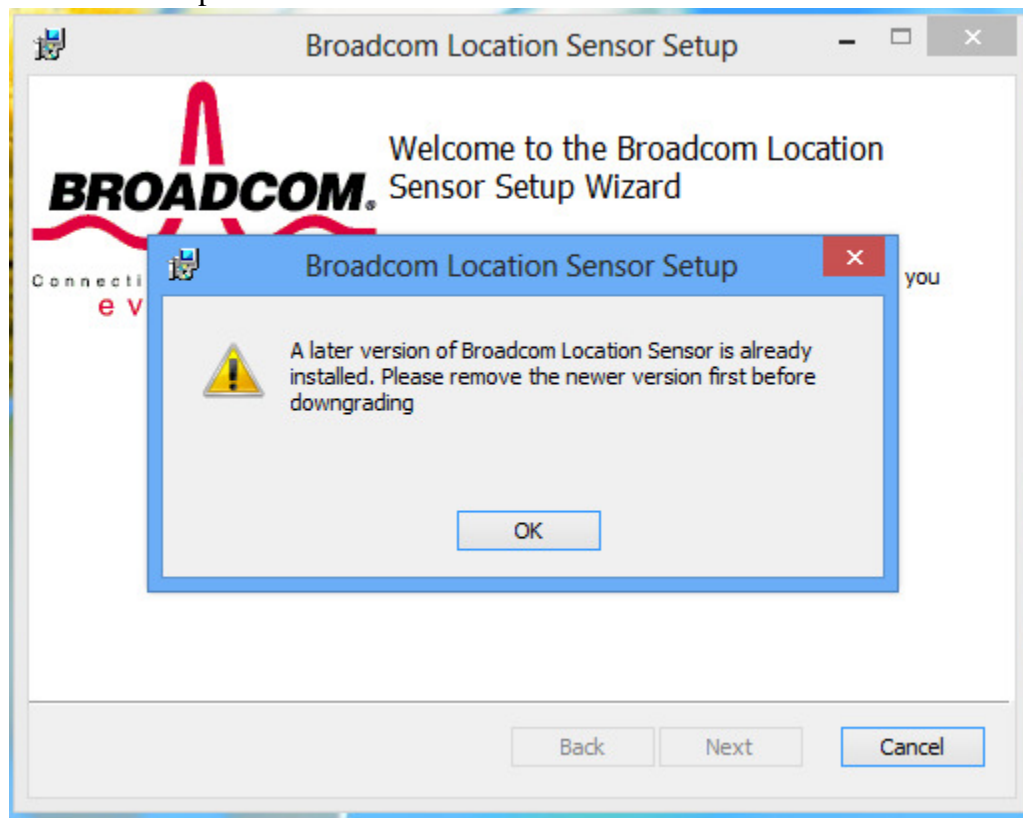






## 1.2 Upgrade

When upgrading, please follow the installation steps describe at section 1.1 except if you are planning to install an older version of the driver. In this case you must uninstall the current version first.



It is always safer to uninstall and reboot before installing a new version of the driver to avoid any possible lock on the driver. If you see the screen as shown in section 1.3.6, then reboot the operating system at the end of the installation and proceed with the installation upon complete restart.

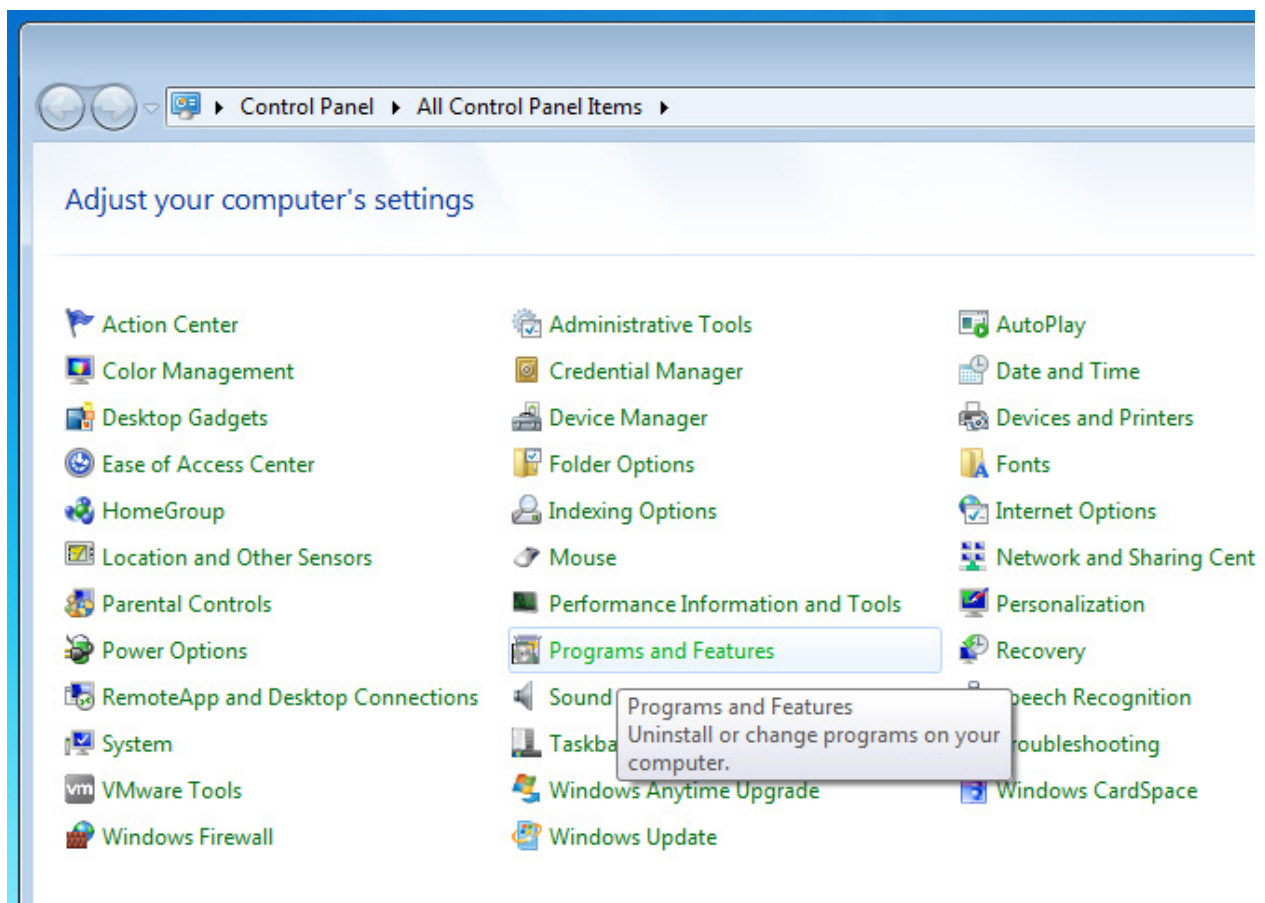


## 1.3 Interactive Uninstallation

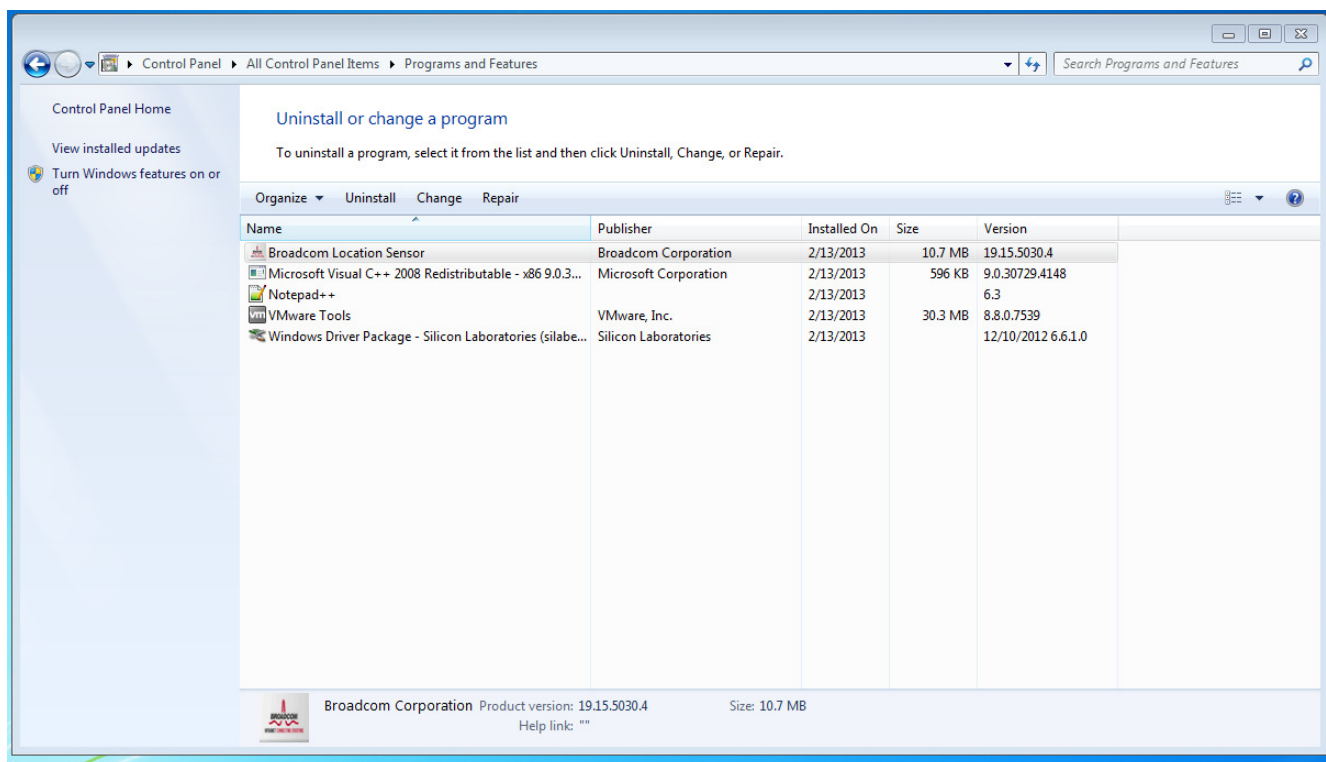
1.3.1 Access the Settings menu. Move your mouse to the right of the screen until you see the following panel then select Settings



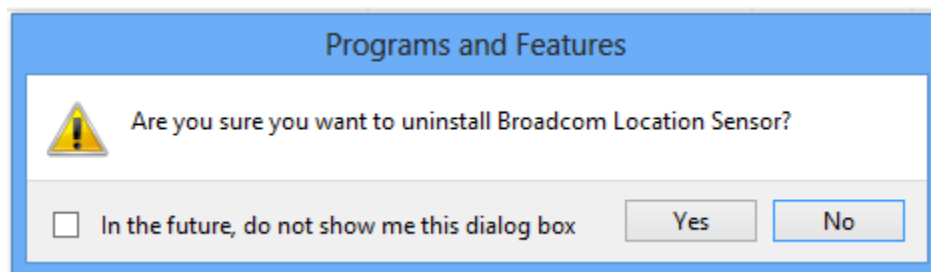
1.3.2 Click on Control Panel



1.3.3 Select Broadcom Location Sensor then click on Uninstall. If you want to Repair your installer in case you uninstall the Location Sensor Driver manually or if you accidentally lose a file click on Repair

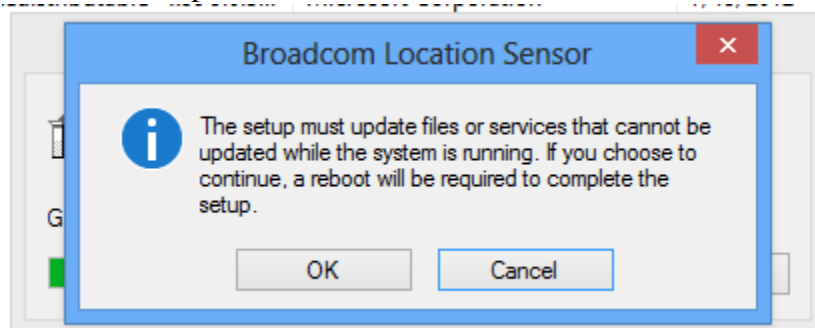


1.3.4 Click on Yes



1.3.5 Click on OK if you see the following screen

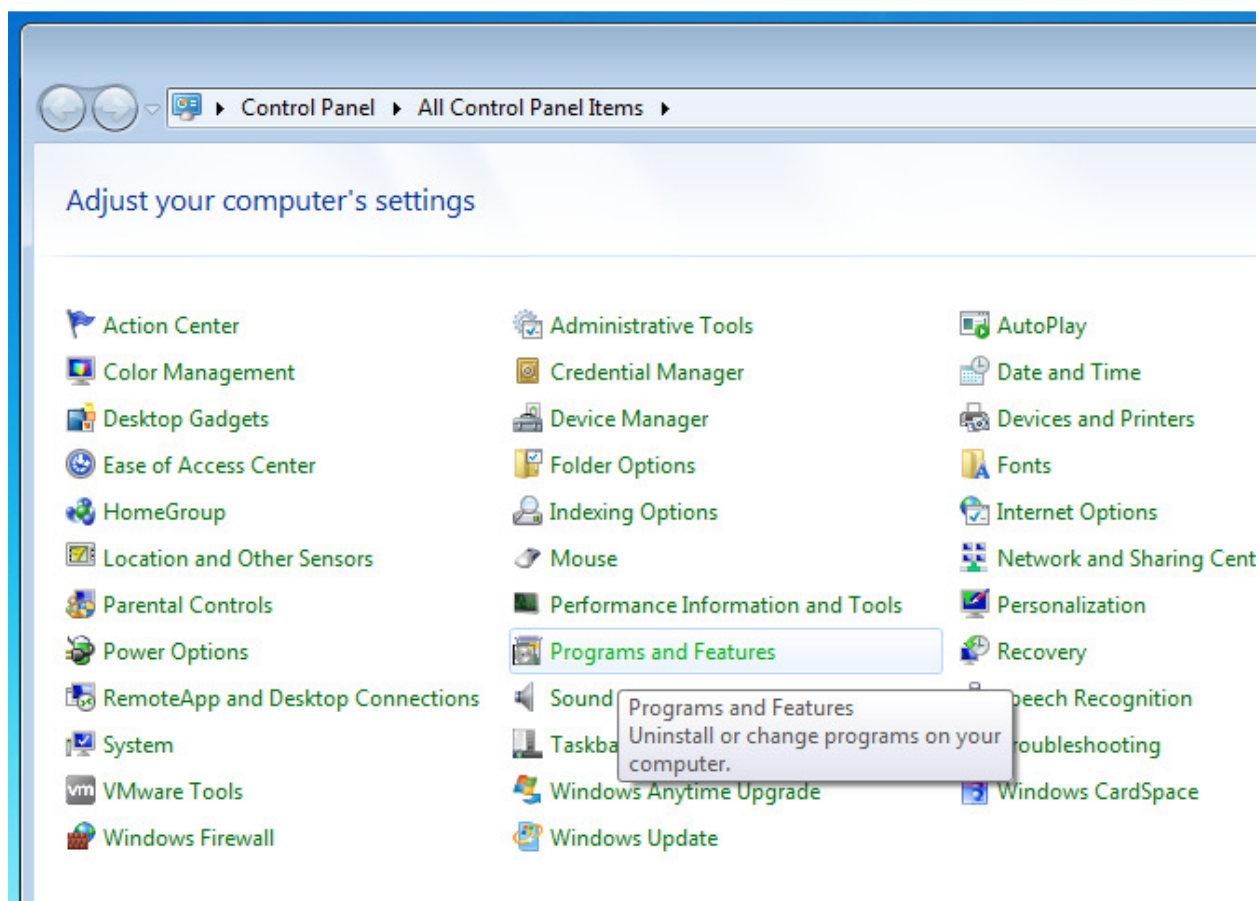




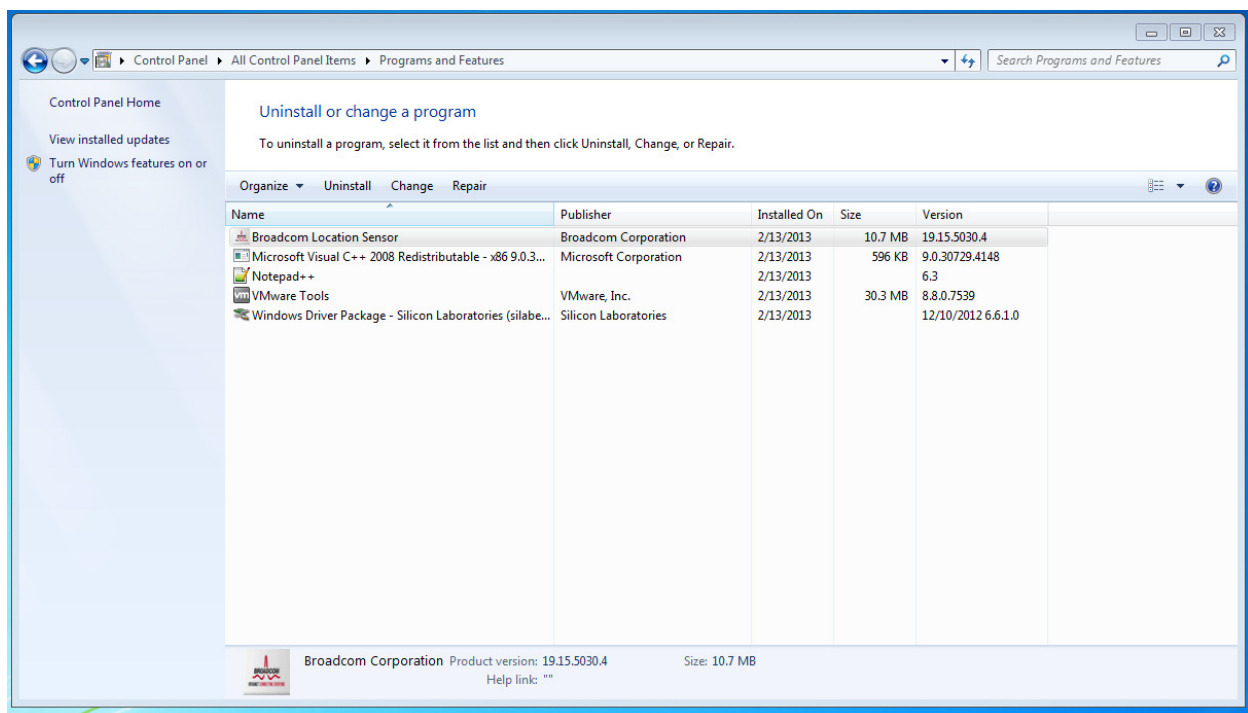
## 1.4 Interactive Maintenance

1.4.1 Access the Settings menu. Move your mouse to the right of the screen until you see the following panel then select Settings

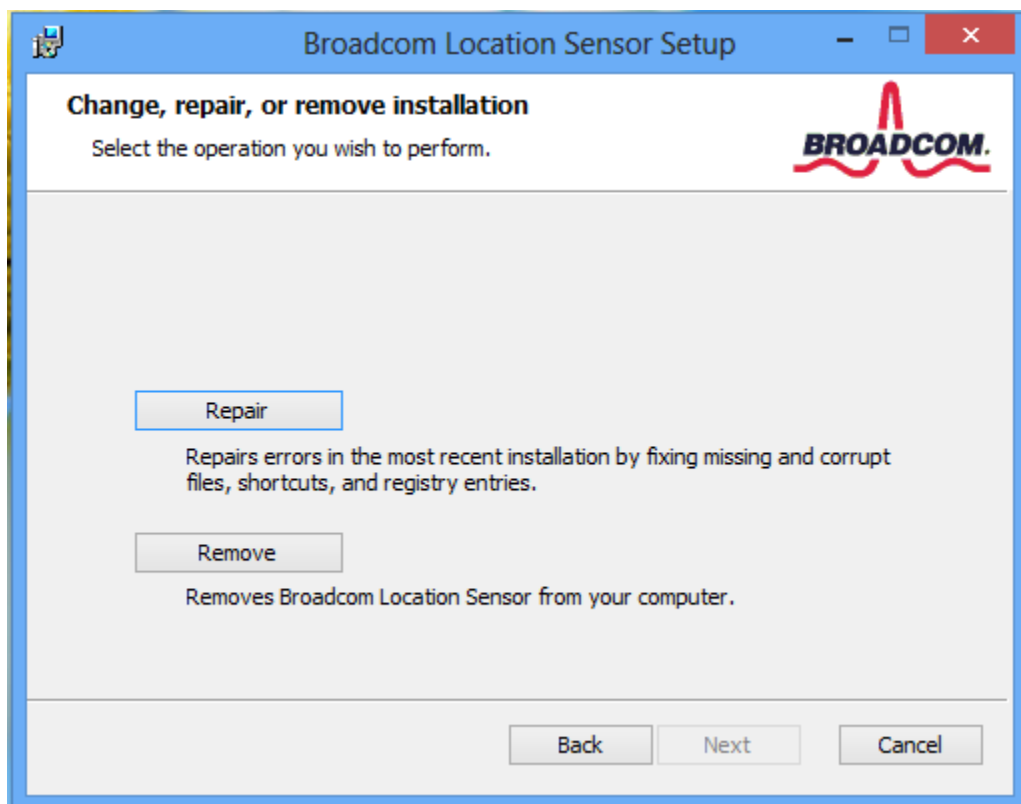
1.4.2 Click on Control Panel



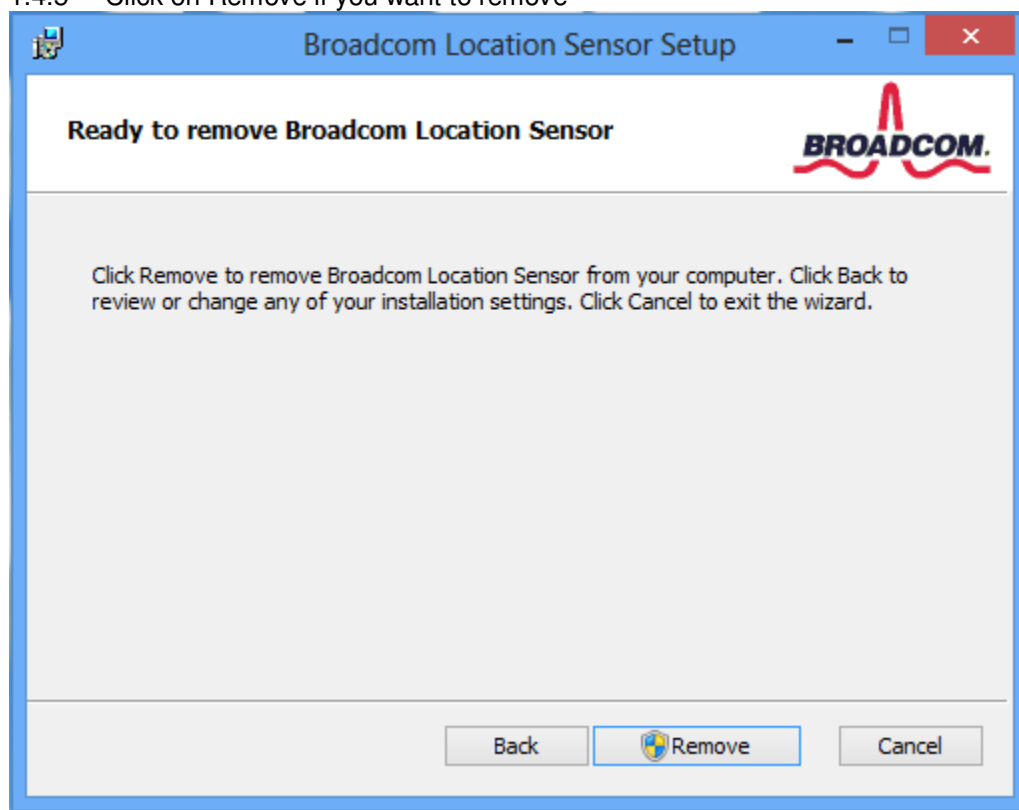
## 1.4.3 Select Broadcom Location Sensor then click on Change or Repair.



## 1.4.4 Select Repair or Remove



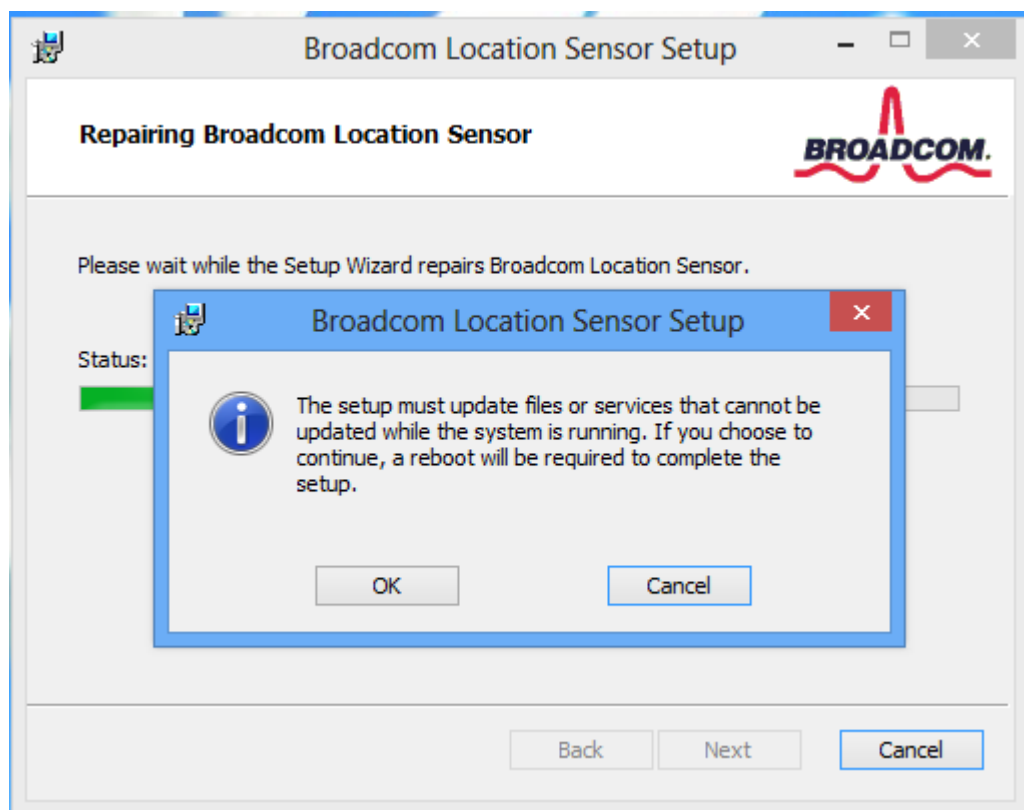
## 1.4.5 Click on Remove if you want to remove



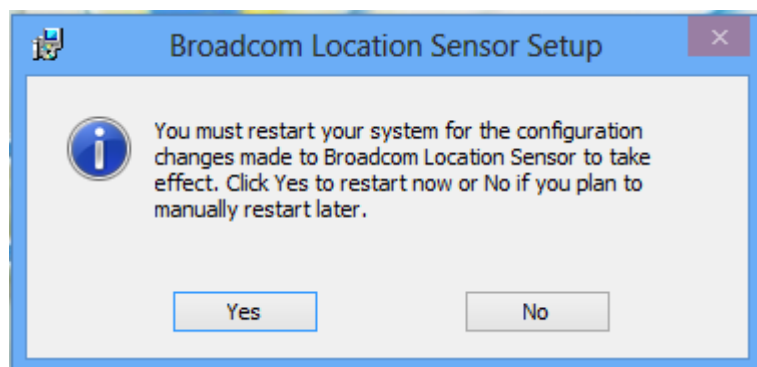
## 1.4.6 Click on Repair if you want to repair



## 1.4.7 Click on Ok



## 1.4.8 Click on Yes



## 1.5 Batch or Silent Installation and Uninstallation

The following subsections describe how to install the software on the command prompt. Syntax for 32-bit Windows Operating System shown, replace "x86" with "x64" for 64-bit Windows Operating Systems. Note that the optional argument /lv log.txt is for creating a log file of the installation process.

## 1.5.1 msixexec (manual OS selection)

- Run the following cmd:

### Installation

- `msiexec /i Broadcom_Location_*.msi /qn /norestart /l*v log.txt`

## Uninstallation

- `msiexec /x Broadcom_Location_*.msi /qn /norestart /l*v log.txt`

## Restart Options

`/norestart`

Do not restart after the installation is complete

`/promptrestart`

Prompts the user for restart if necessary

`/forcerestart`

Always restart the computer after installation

## 1.5.2 MSI log

Starting with driver 19.15.5030.4 and above during silent installation here is what to look for to see in the MSI log whether the driver(s) have been properly installed or not.

**Property(S): ResultCode=0** means driver(s) installation is successful

**Property(S): ResultCode=1** means reboot is needed

An upgrade was needed for umdf-1.11-Win-6.1.msu. Please reboot your system and restart the installer

Restarting the installation after reboot should lead to **Property(S): ResultCode = 0**

**Property(S): ResultCode=-1** means driver(s) installation failed but

All driver(s) related files have been deployed under Program File \ Broadcom \ Location

At this point a manual installation of the driver should be possible as well to escalate the issue

**Property(S): ResultCode=2** means ACPI driver installation / uninstallation failed

**Property(S): ResultCode=3** means BcmGnss Location Sensor driver installation / uninstallation failed